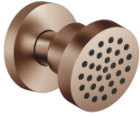


28 518 979



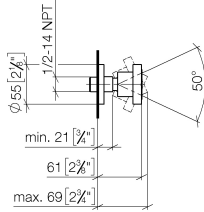
- spray head Ø 55mm
- ball-joint pivotable through 25° (in any direction)
- HORIZONTAL RAIN, max. flow rate 5 l/min (at 3 bar)
- with anti-scale system
- rosette Ø 55 mm
- 1/2" connection
- This product can help a building meet the requirements of Green Building Rating Systems, e.g. LEED®, BREEAM®, DGNB

Fits: TARA, LISSÉ, VAIA, META

| | | |
|---|--------------------------------|---------------|
|  | Brushed Bronze | 28 518 979-42 |
|  | Chrome | 28 518 979-00 |
|  | Brushed Platinum | 28 518 979-06 |
|  | Platinum | 28 518 979-08 |
|  | Durabronze (23kt Gold) | 28 518 979-09 |
|  | Dark Chrome | 28 518 979-19 |
|  | Light Gold | 28 518 979-26 |
|  | Brushed Light Gold | 28 518 979-27 |
|  | Brushed Durabronze (23kt Gold) | 28 518 979-28 |
|  | Matte Black | 28 518 979-33 |
|  | Brushed Champagne (22kt Gold) | 28 518 979-46 |
|  | Champagne (22kt Gold) | 28 518 979-47 |
|  | Brushed Chrome | 28 518 979-93 |
|  | Brushed Dark Platinum | 28 518 979-99 |

28 518 979

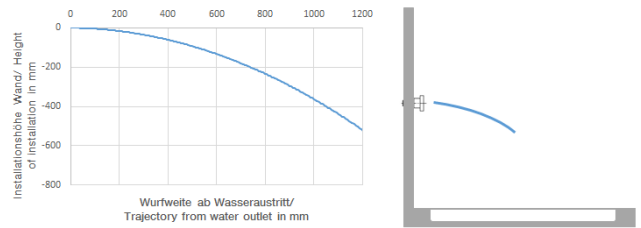
mm [inches]



Flow rate chart



Trajectory diagram



Codes & Standards

ASME
A112.18.1/CSA
B125.1

California Energy
Commission
(CEC)



Body spray without volume control FlowReduce - Brushed Bronze

TARA

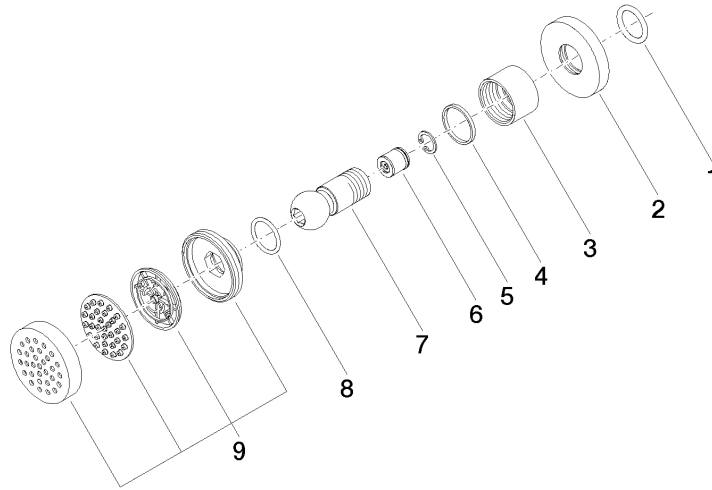
28 518 979

Certificates

LGA_38651.

28 518 979

Parts for other finishes can be found here: [Chrome](#)



Spare parts list

| No. | Item Number | Name | Quantity used | Delivery time |
|-----|--------------------|-----------------------|---------------|---------------|
| 1 | 90 14 10 026 00 90 | seal | 1 | 2 |
| 2 | 09 27 22 019-42 | rosette | 1 | 60 |
| 3 | 09 23 30 026-42 | nut | 1 | 60 |
| 4 | 09 14 15 010 90 | ring | 1 | 2 |
| 5 | 09 16 01 014 90 | ring | 1 | 2 |
| 6 | 09 23 01 048 90 | back-flow preventer | 1 | 2 |
| 7 | 09 21 40 016-42 | connection | 1 | 60 |
| 8 | 09 14 10 015 90 | seal | 1 | 2 |
| 9 | 90 12 05 027 00-42 | casing (completely) | 1 | 30 |