

SYMETRICS Two-way diverter - Chrome

29 125 985



- rotary diverter
- hole diameter 37 mm
- rosette 60 x 60 mm
- male thread 1/2" connection
- max. flow 23.5 l/min

Not suitable for combining with Perfecto (12 614 970 90).

Recommended miscellaneous



Hose set -

12 509 970-90

- ATTENTION: Hose set is required for combining 2 outlet points with a diverter

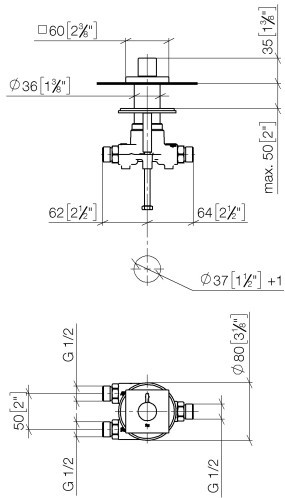
0010



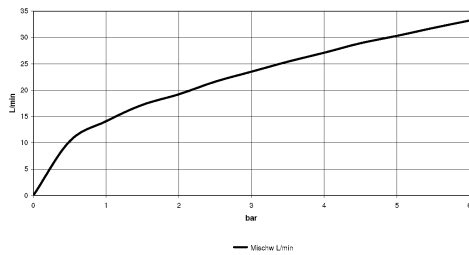
SYMETRICS Two-way diverter - Chrome

29 125 985

mm [inches]



Flow rate chart



Codes & Standards

ASME
A112.18.1/CSA
B125.1

California Energy
Commission
(CEC)

DIN 4109

ISO 3822

Ü-Zeichen



SYMETRICS Two-way diverter - Chrome

29 125 985

Certificates

LGA_18

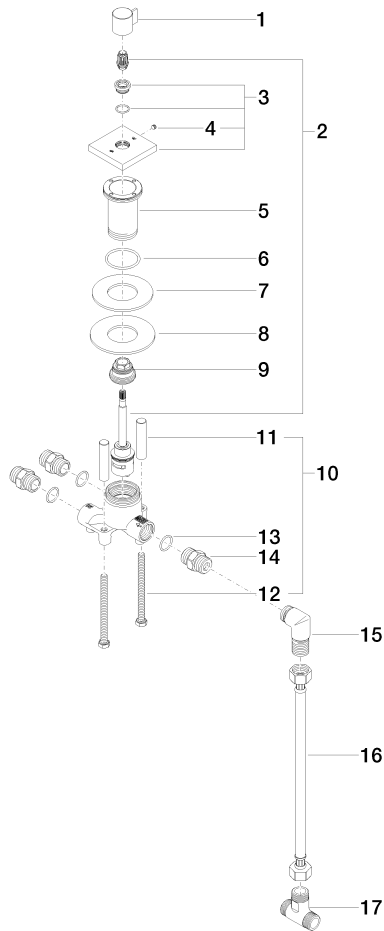


SYMETRICS Two-way diverter - Chrome

29 125 985

Product version up to 4/30/2013

Product version from 4/30/2013





SYMETRICS Two-way diverter - Chrome

29 125 985

Spare parts list

Product version up to 4/30/2013

Product version from 4/30/2013

No.	Item Number	Name	Quantity used	Delivery time
	09 20 98 002-00	handle	23	10