

**MEM Single-lever basin mixer - Chrome**

MEM

29 210 782



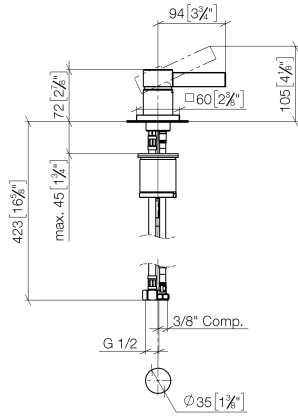
- hole diameter 35 mm
- rosette 60 x 60 mm
- 3x screw-in M 10 x 1 pressure hose, leak-tested
- 2 x pressure hose with 3/8" cap nut

Note: Local building codes may require the use of an anti-scald device. Please refer to remote pressure balance valve (35 910 970 90)

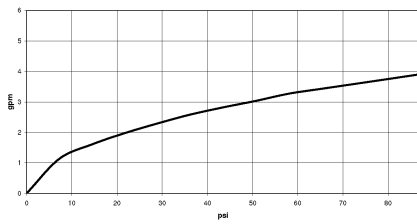
|   |                                     |                    |
|---|-------------------------------------|--------------------|
|  | Chrome                              | 29 210 782-00 0010 |
|  | Brushed Platinum                    | 29 210 782-06 0010 |
|  | Platinum                            | 29 210 782-08 0010 |
|  | Dark Chrome                         | 29 210 782-19 0010 |
|  | Brushed Durabronze<br>(23kt Gold)   | 29 210 782-28 0010 |
|  | Brushed<br>Champagne (22kt<br>Gold) | 29 210 782-46 0010 |
|  | Champagne (22kt<br>Gold)            | 29 210 782-47 0010 |
|  | Brushed Dark<br>Platinum            | 29 210 782-99 0010 |

29 210 782

mm [inches]

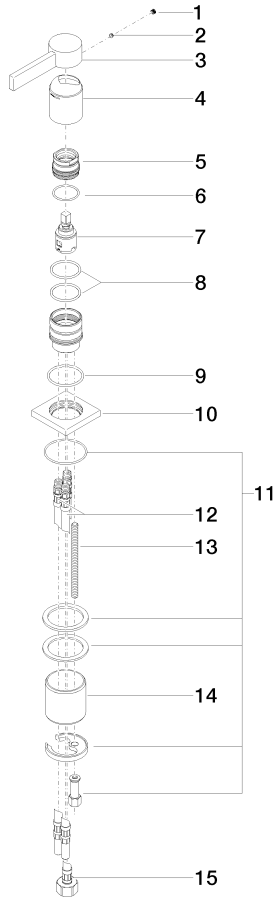


**Flow rate chart**



29 210 782

Parts for other finishes can be found here: Brushed Platinum



**Spare parts list**

| No. | Item Number        | Name       | Quantity used | Delivery time |
|-----|--------------------|------------|---------------|---------------|
| 1   | 90 31 20 109 00 90 | plug       | 1             | 2             |
| 2   | 90 31 11 063 00 90 | pin        | 1             | 2             |
| 3   | 09 20 78 057-00    | handle     | 1             | 10            |
| 4   | 09 11 02 289-00    | cover      | 1             | 10            |
| 5   | 09 24 04 288 90    | nut        | 1             | 2             |
| 6   | 09 14 10 137 90    | seal       | 1             | 2             |
| 7   | 90 15 05 042 00 90 | cartridge  | 1             | 2             |
| 8   | 09 14 10 192 90    | seal       | 2             | 2             |
| 9   | 09 14 10 067 90    | seal       | 1             | 2             |
| 10  | 09 27 78 040-00    | rosette    | 1             | 10            |
| 11  | 04 30 11 038 02 90 | fixing set | 1             | 2             |
| 12  | 04 30 04 045 00 90 | hose       | 2             | 60            |
| 13  | 09 31 11 012 90    | pin        | 1             | 2             |
| 14  | 09 18 40 079 90    | sleeve     | 1             | 2             |
| 15  | 04 30 04 019 00 90 | hose       | 1             | 2             |