

**VAIA Wall-mounted valve cold water without pop-up waste - Brushed Durabronze (23kt Gold)**

VAIA

30 010 809



- 151mm projection
- fixed spout
- circular, air-enriched flow
- adapter with male thread 3/4"
- hole diameter 35 mm
- rosette Ø 60 mm
- max. flow 4.5 l/min
- lead-free
- This product can help a building meet the requirements of Green Building Rating Systems, e.g. LEED®, BREEAM®, DGNB

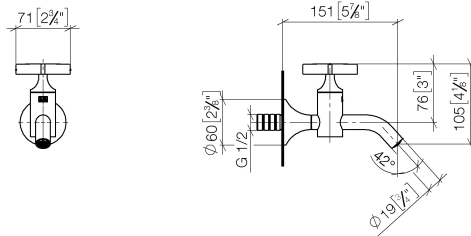
|   |                                |                    |
|---|--------------------------------|--------------------|
|  | Brushed Durabronze (23kt Gold) | 30 010 809-28 0010 |
|  | Chrome                         | 30 010 809-00 0010 |
|  | Brushed Platinum               | 30 010 809-06 0010 |
|  | Platinum                       | 30 010 809-08 0010 |
|  | Dark Chrome                    | 30 010 809-19 0010 |
|  | Brushed Bronze                 | 30 010 809-42 0010 |
|  | Brushed Champagne (22kt Gold)  | 30 010 809-46 0010 |
|  | Champagne (22kt Gold)          | 30 010 809-47 0010 |
|  | Brushed Dark Platinum          | 30 010 809-99 0010 |



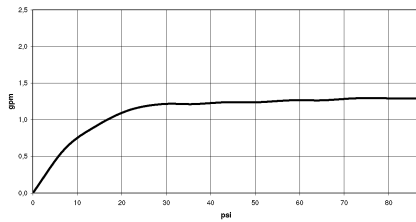
# VAIA Wall-mounted valve cold water without pop-up waste - Brushed Durabronz (23kt Gold)

VAIA

30 010 809  
mm [inches]



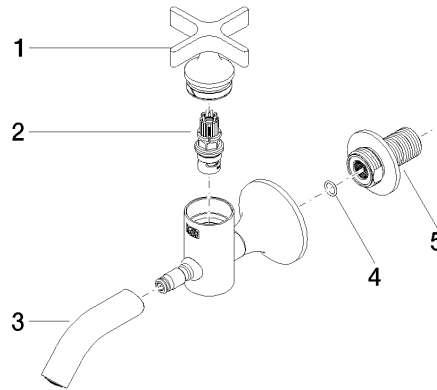
## Flow rate chart



## Codes & Standards

California Energy  
Commission  
(CEC)

30 010 809  
Parts for other  
finishes can be found  
here: Chrome



### Spare parts list

| No. | Item Number        | Name   | Quantity used | Delivery time |
|-----|--------------------|--------|---------------|---------------|
| 1   | 90 20 66 025 00-28 | handle | 1             | 20            |
| 2   | 90 90 03 175 00 90 | top    | 1             | 2             |
| 3   | 90 28 22 381 01-28 | spout  | 1             | 20            |
| 4   | 90 14 10 060 00 90 | seal   | 1             | 2             |
| 5   | 09 24 03 269 90    | nipple | 1             | 2             |