

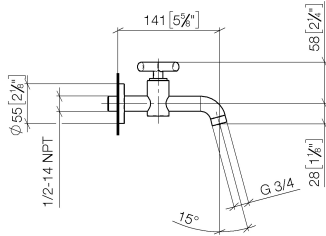
30 010 892



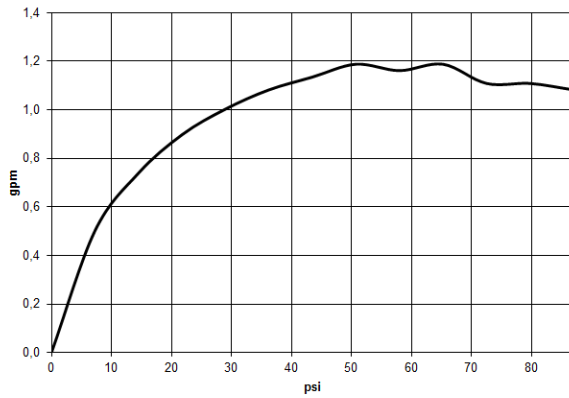
- 140mm projection
- fixed spout
- circular, air-enriched flow
- adapter with male thread 3/4"
- hole diameter 32 mm
- rosette Ø 55 mm
- max. flow 4.5 l/min
- lead-free
- This product can help a building meet the requirements of Green Building Rating Systems, e.g. LEED®, BREEAM®, DGNB

30 010 892

mm [inches]



Flow rate chart



Codes & Standards

ADA

California Energy
Commission
(CEC)

NSF/ANSI 372

NSF372



TARA Wall-mounted valve cold water without pop-up waste - Matte Black

TARA

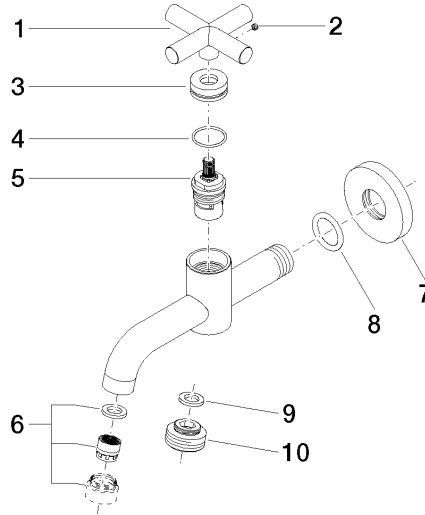
30 010 892

Certificates

IAPMO_6

30 010 892

Product version from 7/1/2016





TARA Wall-mounted valve cold water without pop-up waste - Matte Black

TARA

30 010 892

Spare parts list

Product version from 7/1/2016

No.	Item Number	Name	Quantity used	Delivery time
	09 20 89 011-33	handle	10	30