

30 805 875



- 500mm projection
- pivoting spout
- laminar flow
- cold water only
- max. flow 5.7 l/min at 3 bar flow pressure
- two valves
- min. recess depth 125 mm
- max. recess depth 80 mm
- lead-free
- This product can help a building meet the requirements of Green Building Rating Systems, e.g. LEED®, BREEAM®, DGNB

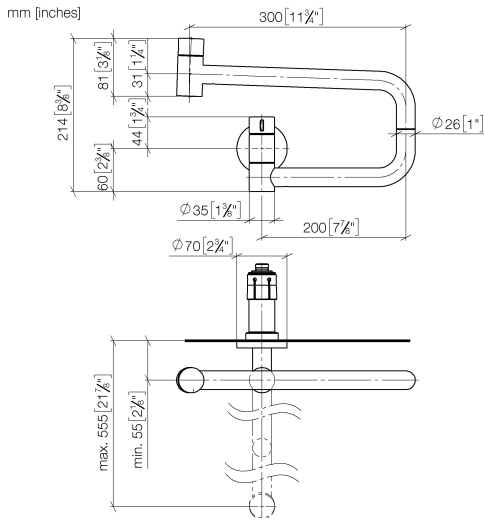
| | | |
|---|--------------------------------|---------------|
|  | Chrome | 30 805 875-00 |
|  | Brushed Platinum | 30 805 875-06 |
|  | Platinum | 30 805 875-08 |
|  | Durabronze (23kt Gold) | 30 805 875-09 |
|  | Dark Chrome | 30 805 875-19 |
|  | Brushed Durabronze (23kt Gold) | 30 805 875-28 |
|  | Brushed Champagne (22kt Gold) | 30 805 875-46 |
|  | Champagne (22kt Gold) | 30 805 875-47 |
|  | Brushed Chrome | 30 805 875-93 |
|  | Brushed Dark Platinum | 30 805 875-99 |

Required miscellaneous

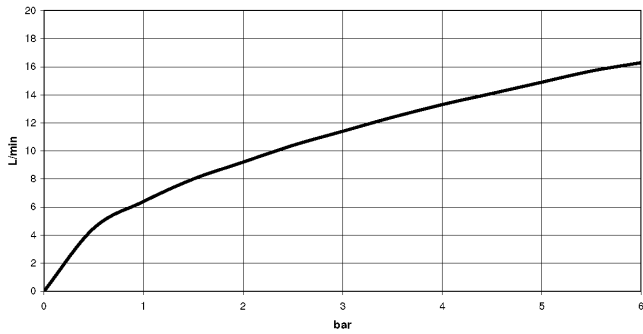


- POT FILLER Concealed wall elbow** 35 087 970-90
- 0010
- max. recess depth 125 mm
 - min. recess depth 80 mm

30 805 875



Flow rate chart



Codes & Standards

ASME
A112.18.1/CSA
B125.1

California Energy
Commission
(CEC)

NSF/ANSI 372

NSF/ANSI/CAN
61



TARA ULTRA POT FILLER Cold-water valve - Chrome

TARA ULTRA

30 805 875

Certificates

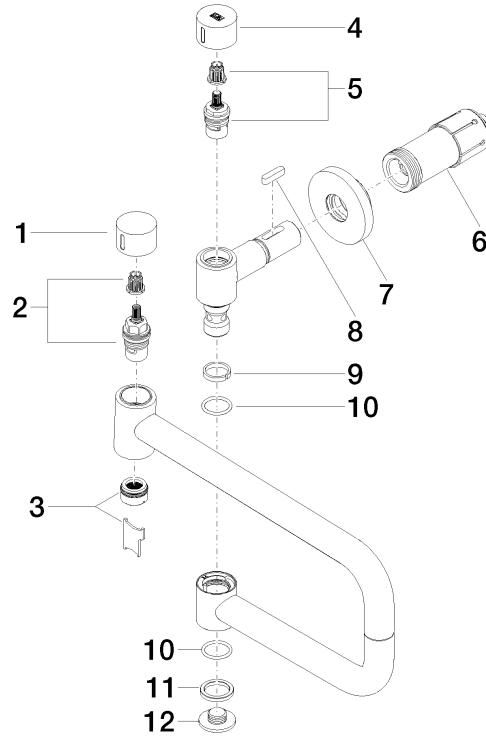
LGA_29748.

IAPMO_N-4976.

IAPMO_4976 (4).

IAPMO_6397.

30 805 875



Spare parts list

| No. | Item Number | Name | Quantity used | Delivery time |
|-----|--------------------|------------|---------------|---------------|
| 1 | 09 20 62 025-00 | handle | 1 | 10 |
| 2 | 90 90 03 146 00 90 | top | 1 | 2 |
| 3 | 90 23 01 026 11-00 | aerator | 1 | 10 |
| 4 | 09 20 62 027-00 | handle | 1 | 10 |
| 5 | 90 90 03 171 00 90 | top | 1 | 2 |
| 6 | 90 30 01 213 00 90 | connection | 1 | 2 |
| 7 | 90 27 87 039 00-00 | rosette | 1 | 10 |
| 8 | 90 16 04 001 00 90 | spring | 1 | 2 |
| 9 | 09 28 10 136 90 | ring | 1 | 2 |
| 10 | 09 14 10 015 90 | seal | 2 | 2 |
| 11 | 09 28 10 139 90 | ring | 1 | 2 |
| 12 | 09 21 02 028-00 | lid | 1 | 10 |