

33 200 660



- 202mm projection
- circular normal flow
- automatic bath/shower diverter
- 3/8" shower outlet
- slide-on rosettes Ø 60 mm
- 1/2" connection
- gauge 150 mm - 15 mm
- max. flow 14 l/min at 3 bar flow pressure
- WRAS 2207043

**Intrinsic protection against back flow.**


**Note: Local building codes may require the use of an anti-scald device. Please refer to remote pressure balance valve (35 910 970 90)**

Intrinsic protection against back flow.

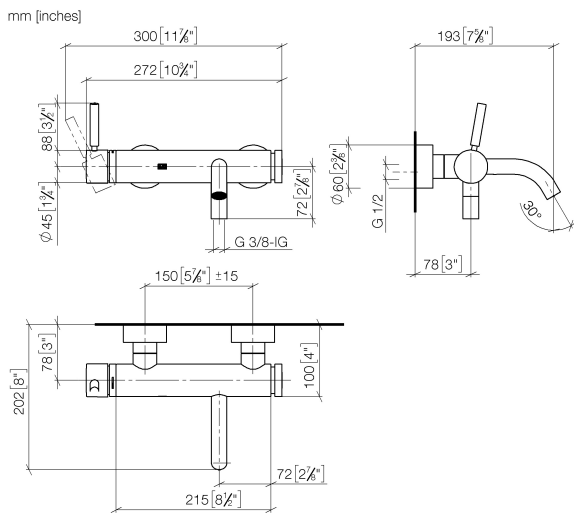
Note: Local building codes may require the use of an anti-scald device. Please refer to remote pressure balance valve (35 910 970 90)

	Chrome	33 200 660-00
	Brushed Platinum	33 200 660-06
	Dark Chrome	33 200 660-19
	Light Gold	33 200 660-26
	Brushed Light Gold	33 200 660-27
	Matte Black	33 200 660-33
	Brushed Bronze	33 200 660-42
	Brushed Champagne (22kt Gold)	33 200 660-46
	Champagne (22kt Gold)	33 200 660-47
	Brushed Chrome	33 200 660-93
	Brushed Dark Platinum	33 200 660-99

Required miscellaneous

	<b>Concealed adapter -</b> •please order two adapters (USA only)	35 080 970-90 0010
---	---	-----------------------

33 200 660



**Flow rate chart**



**Codes & Standards**

California Energy  
Commission  
(CEC)



## META Single-lever bath mixer for wall mounting without shower set - Chrome

---

META

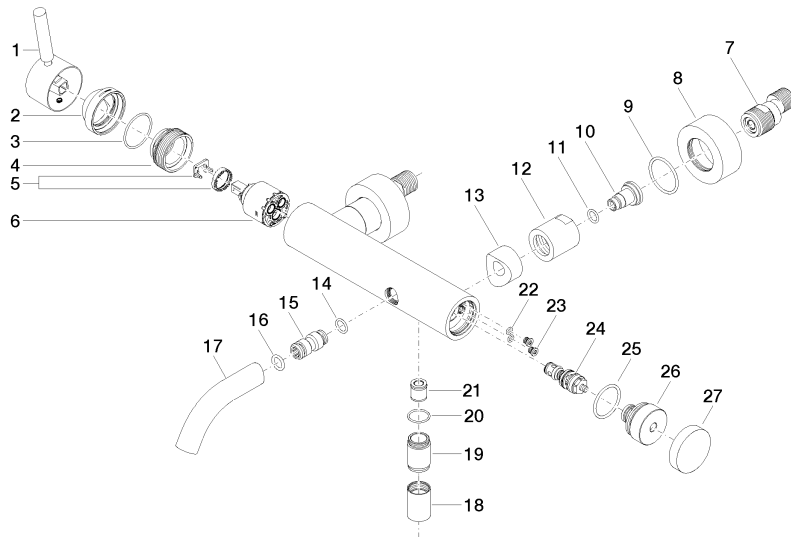
33 200 660

### Certificates

---

Belgaqua\_21-025- 27\_1. LGA\_29687. WRAS\_2207043.

33 200 660





## META Single-lever bath mixer for wall mounting without shower set - Chrome

META

33 200 660

### Spare parts list

No.	Item Number	Name	Quantity used	Delivery time
1	90 20 66 007 00-00	handle	1	10
2	09 28 30 032-00	cover	1	10
3	09 14 10 102 90	seal	1	2
4	09 24 04 296 90	nut	1	2
5	90 28 10 148 00 90	accessories	1	2
6	90 15 05 064 00 90	cartridge	1	2
7	04 11 04 030 00 90	connection	2	2
8	09 27 62 004-00	rosette	2	10
9	09 14 10 119 90	seal	2	2
10	09 29 05 005 20 90	nipple	2	60
11	09 14 10 008 90	seal	2	2
12	09 23 10 048-00	nut	2	10
13	09 18 40 059-00	sleeve	2	10
14	09 14 10 003 90	seal	1	2
15	09 24 04 043 90	nipple	1	2
16	90 14 10 011 00 90	seal	1	2
17	90 11 06 213 00-00	spout	1	10
18	90 21 02 069 00-00	cover	1	10
19	09 24 03 115 20-00	nipple	1	10
20	90 14 10 032 00 90	seal	1	2
21	90 23 01 141 00 90	back-flow preventer	1	2
22	09 14 10 001 90	seal	2	2
23	09 30 30 113 20 90	screw	2	2
24	90 31 09 032 00-00	diverter	1	10
25	09 14 10 101 90	seal	1	2
26	09 21 10 035 20-00	nipple	1	10
27	09 20 62 031-00	handle	1	10