

IMO Single-lever bath mixer for wall mounting without shower set - Dark Chrome

IMO

33 200 671 Product version from 4/1/2024


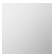






- 190mm projection
- circular normal flow
- automatic bath/shower diverter
- 3/8" shower outlet
- slide-on rosettes Ø 60 mm
- 1/2" connection
- gauge 150 mm - 15 mm
- max. flow 16.7 l/min at 3 bar flow pressure

Intrinsic protection against back flow.

Note: Local building codes may require the use of an anti-scald device. Please refer to remote pressure balance valve (35 910 970 90)

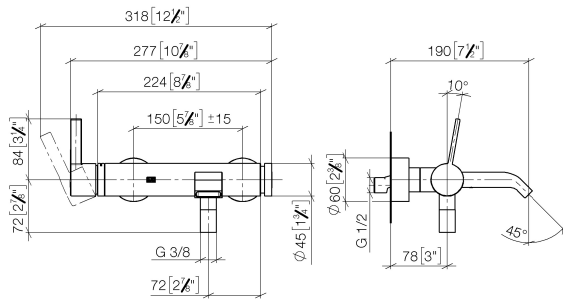
NOTE: Hand shower sold separately. Please see hand shower options under the miscellaneous articles section of each series.

	Dark Chrome	33 200 671-19 0010
	Chrome	33 200 671-00 0010
	Brushed Platinum	33 200 671-06 0010
	Matte Black	33 200 671-33 0010
	Brushed Chrome	33 200 671-93 0010
	Brushed Dark Platinum	33 200 671-99 0010

IMO Single-lever bath mixer for wall mounting without shower set - Dark Chrome

IMO

33 200 671 Product version from 4/1/2024
mm [inches]



Flow rate chart



Codes & Standards

ADA

ASME A112.18.1

cUPC



IMO Single-lever bath mixer for wall mounting without shower set - Dark Chrome

IMO

33 200 671 Product version from 4/1/2024

Certificates and sustainability

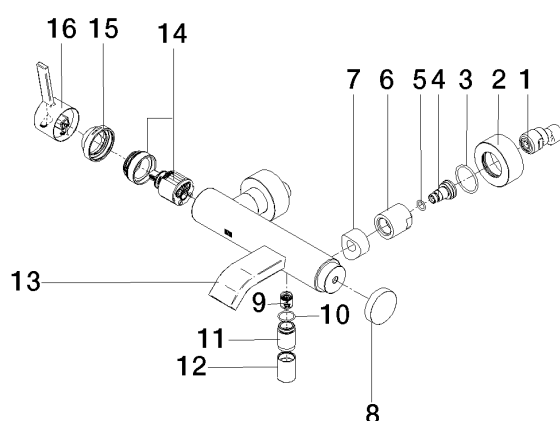
IAPMO_4976 (

IMO Single-lever bath mixer for wall mounting without shower set - Dark Chrome

IMO

33 200 671 Product version from 4/1/2024

Parts for other
finishes can be found
here: [Chrome](#)



Spare parts list

No.	Item Number	Name	Quantity used	Delivery time
	9 90 23 01 141 00 90	back-flow preventer	1.00	2
	7 09 18 40 059-19	sleeve	2.00	20
	6 09 23 10 048-19	nut	2.00	20
	15 09 28 30 032-19	cover	1.00	20
	11 09 24 03 115 20-19	nipple	1.00	20
	10 90 14 10 032 00 90	seal	1.00	2
	5 09 14 10 008 90	seal	2.00	2
	16 90 20 67 020 00-19	handle	1.00	20
	13 90 11 06 228 00-19	spout	1.00	-
Spare part can no longer be ordered, please order the replacement item				
	8 09 20 62 031-19	handle	1.00	20
	12 90 21 02 069 00-19	cover	1.00	20
	2 09 27 62 004-19	rosette	2.00	20
	14 90 15 05 046 01 90	cartridge	1.00	2
	1 04 11 04 030 00 90	connection	1.00	2
	4 09 29 05 005 20 90	nipple	2.00	60
	3 09 14 10 119 90	seal	2.00	2