

33 845 875



- 552mm projection
- pivotable spout 360°
- air-enriched flow
- height of mixer 372 mm
- height up to aerator 290 mm
- rosette 55 mm
- hole diameter 30 mm
- 2 x pressure hose with 3/8" cap nut
- max. flow 5.7 l/min at 3 bar flow pressure
- lead-free
- This product can help a building meet the requirements of Green Building Rating Systems, e.g. LEED®, BREEAM®, DGNB

Not possible in combination with rinsing spray.

	Platinum	33 845 875-08 0010
	Chrome	33 845 875-00 0010
	Brushed Platinum	33 845 875-06 0010
	Durabross (23kt Gold)	33 845 875-09 0010
	Dark Chrome	33 845 875-19 0010
	Brushed Durabross (23kt Gold)	33 845 875-28 0010
	Brushed Champagne (22kt Gold)	33 845 875-46 0010
	Champagne (22kt Gold)	33 845 875-47 0010
	Brushed Chrome	33 845 875-93 0010
	Brushed Dark Platinum	33 845 875-99 0010

Recommended miscellaneous

**AIR SWITCH Control button - Platinum** 10 713 970-08

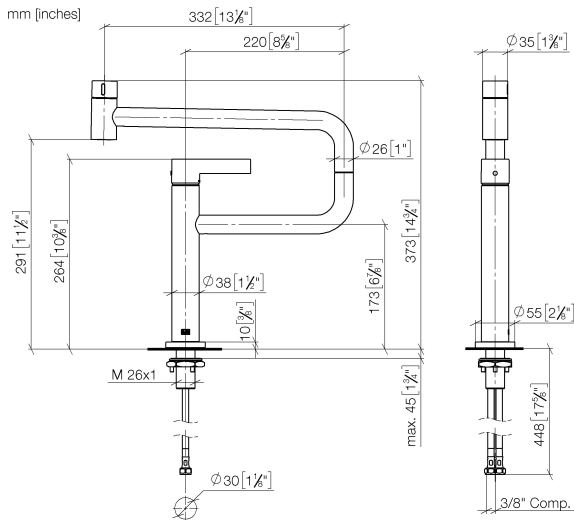


Recommended miscellaneous

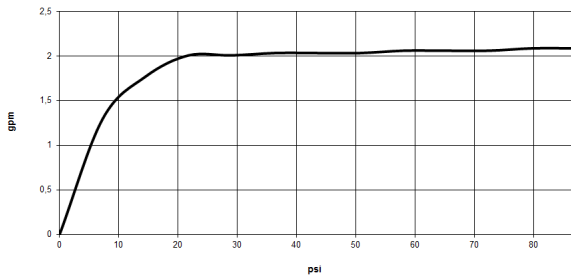
**Dispenser with rosette - Platinum** 82 444 970-08



33 845 875



Flow rate chart



Codes & Standards

ADA

ASME  
A112.18.1/CSA  
B125.1

California Energy  
Commission  
(CEC)

NSF/ANSI 372

NSF/ANSI/CAN  
61



## TARA ULTRA PIVOT Single-lever mixer - Platinum

---

TARA ULTRA

33 845 875

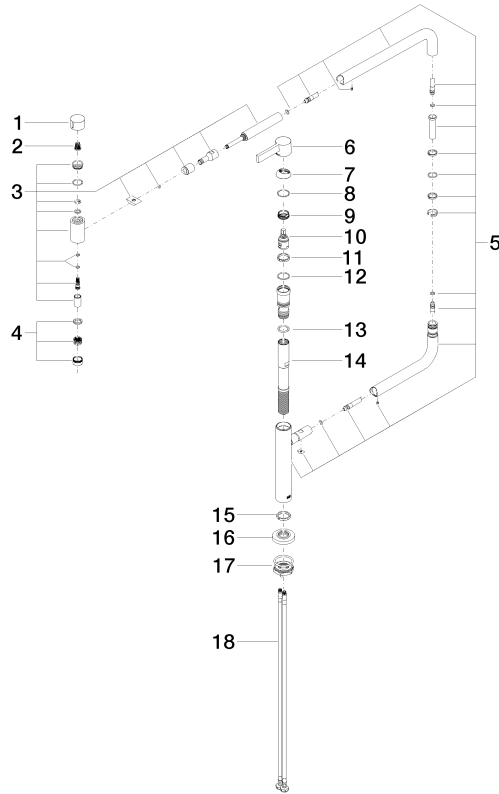
### Certificates

---

IAPMO\_N-4976 (2). IAPMO\_6397 (1).

33 845 875

Parts for other finishes can be found here: [Chrome](#)



## Spare parts list

No.	Item Number	Name	Quantity used	Delivery time
1	09 20 62 025-08	handle	1	60
2	90 12 12 002 00 90	fixing cap	1	2
3	90 19 87 001 00-08	spout	1	40
4	90 23 01 026 08-08	aerator	1	40
5	90 28 22 257 00-08	joint	1	40
6	90 20 87 004 00-08	handle	1	40
7	09 28 30 013-08	cover	1	40
8	09 14 10 091 90	seal	1	2
9	09 24 04 266 90	nut	1	2
10	90 15 05 042 00 90	cartridge	1	2
11	09 28 10 156 90	ring	1	2
12	90 14 10 063 00 90	seal	1	2
13	09 14 10 081 90	seal	1	2
14	09 30 01 126 90	connection	1	2
15	09 28 10 159 90	ring	1	2
16	09 27 87 033-08	rosette	1	40
17	04 30 11 085 87 90	fixing set	1	2
18	04 30 04 103 00 90	hose	2	2