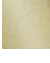
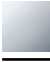

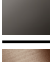




36 200 809



- rotary diverter
- rosette Ø 60 mm
- with shut-off function

	Brushed Durabronze (23kt Gold)	36 200 809-28 0010
	Chrome	36 200 809-00 0010
	Brushed Platinum	36 200 809-06 0010
	Dark Chrome	36 200 809-19 0010
	Brushed Bronze	36 200 809-42 0010
	Brushed Dark Platinum	36 200 809-99 0010

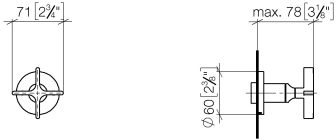
Required miscellaneous



- Concealed two-way diverter -** 35 202 970-90  
 •max. recess depth 160 mm 0010  
 •min. recess depth 85 mm

36 200 809

mm [inches]



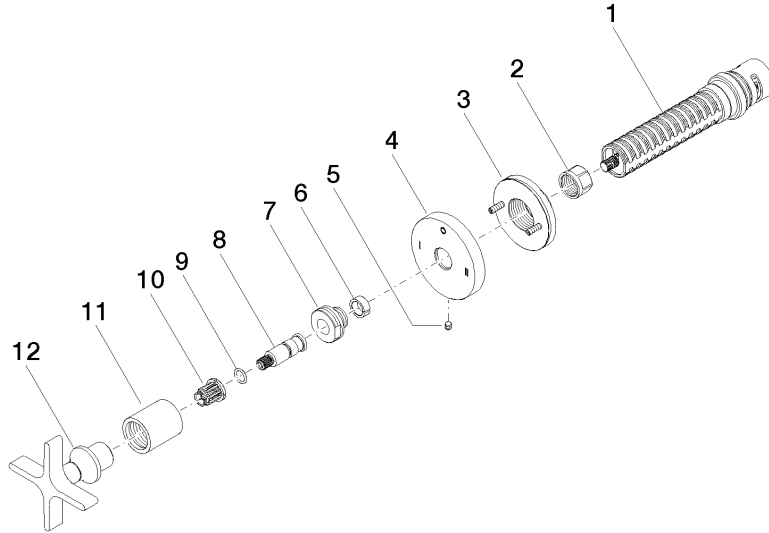
### Flow rate chart



### Codes & Standards

California Energy  
Commission  
(CEC)

36 200 809



### Spare parts list

No.	Item Number	Name	Quantity used	Delivery time
1	90 90 03 306 10 90	diverter	1	2
2	90 23 30 023 00 90	nut	1	2
3	90 21 02 181 00 90	disc	1	2
4	09 27 89 120-28	rosette	1	60
5	09 31 11 294 90	pin	1	2
6	90 14 15 020 03 90	ring	1	2
7	09 24 05 002 90	nipple	1	2
8	09 29 06 022 90	spindle	1	2
9	90 14 10 060 00 90	seal	1	2
10	90 12 12 002 00 90	fixing cap	1	2
11	09 21 02 070-28	cover	1	20
12	90 20 80 014 01-28	handle	1	20