







36 200 819



- rotary diverter
- rosette Ø 60 mm
- with shut-off function

| | | |
|---|-----------------------------------|--------------------|
|  | Brushed Dark Platinum | 36 200 819-99 0010 |
|  | Chrome | 36 200 819-00 0010 |
|  | Brushed Platinum | 36 200 819-06 0010 |
|  | Dark Chrome | 36 200 819-19 0010 |
|  | Brushed Durabronze (23kt Gold) | 36 200 819-28 0010 |
|  | Brushed Bronze | 36 200 819-42 0010 |

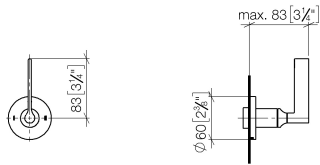
Required miscellaneous



- Concealed two-way diverter -** 35 202 970-90
 •max. recess depth 160 mm 0010
 •min. recess depth 85 mm

36 200 819

mm [inches]



Flow rate chart



Codes & Standards

California Energy
Commission
(CEC)



VAIA Concealed two-way diverter - Brushed Dark Platinum

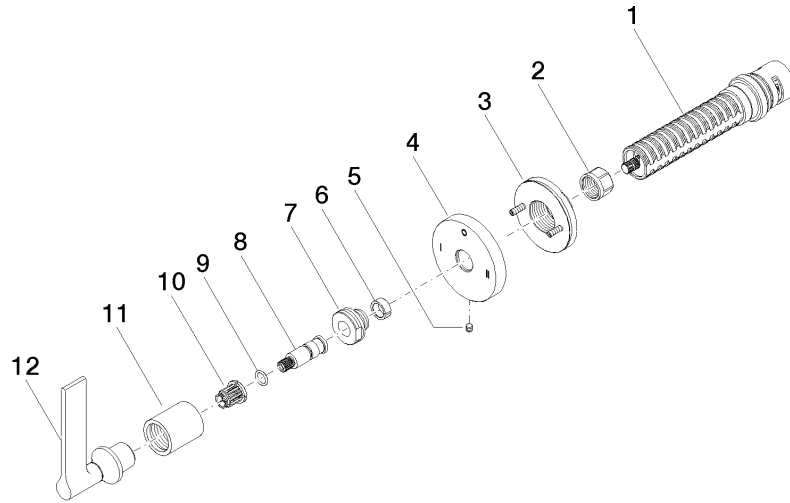
VAIA

36 200 819

Certificates

IAPMO_4976 (7).

36 200 819



Spare parts list

| No. | Item Number | Name | Quantity used | Delivery time |
|-----|--------------------|------------|---------------|---------------|
| 1 | 90 90 03 306 10 90 | diverter | 1 | 2 |
| 2 | 90 23 30 023 00 90 | nut | 1 | 2 |
| 3 | 90 21 02 181 00 90 | disc | 1 | 2 |
| 4 | 09 27 89 120-99 | rosette | 1 | 60 |
| 5 | 09 31 11 294 90 | pin | 1 | 2 |
| 6 | 90 14 15 020 03 90 | ring | 1 | 2 |
| 7 | 09 24 05 002 90 | nipple | 1 | 2 |
| 8 | 09 29 06 022 90 | spindle | 1 | 2 |
| 9 | 90 14 10 060 00 90 | seal | 1 | 2 |
| 10 | 90 12 12 002 00 90 | fixing cap | 1 | 2 |
| 11 | 09 21 02 070-99 | cover | 1 | 30 |
| 12 | 90 20 80 015 01-99 | handle | 1 | 30 |