








36 200 985 Product version from 4/1/2022

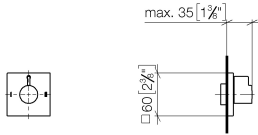


- rotary diverter
- rosette 60 x 60 mm
- with shut-off function

| | | |
|---|--------------------------------|--------------------|
|  | Brushed Light Gold | 36 200 985-27 0010 |
|  | Chrome | 36 200 985-00 0010 |
|  | Brushed Platinum | 36 200 985-06 0010 |
|  | Brushed Durabronze (23kt Gold) | 36 200 985-28 0010 |
|  | Brushed Champagne (22kt Gold) | 36 200 985-46 0010 |
|  | Champagne (22kt Gold) | 36 200 985-47 0010 |
|  | Brushed Dark Platinum | 36 200 985-99 0010 |

36 200 985 Product version from 4/1/2022

mm [inches]



Flow rate chart

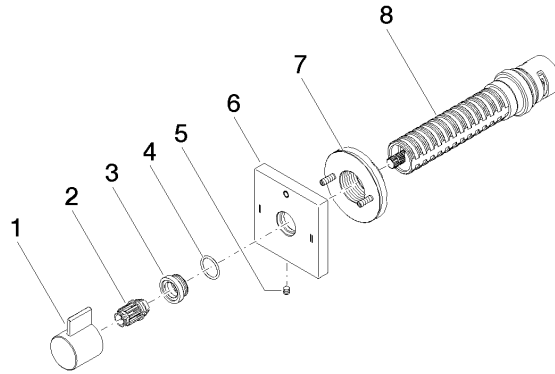


Codes & Standards

California Energy
Commission
(CEC)

36 200 985 Product version from 4/1/2022

Parts for other finishes can be found here: [Chrome](#)



Spare parts list

| No. | Item Number | Name | Quantity used | Delivery time |
|-----|--------------------|------------|---------------|---------------|
| 1 | 09 20 98 002-27 | handle | 1 | 60 |
| 2 | 09 12 12 005 90 | fixing cap | 1 | 2 |
| 3 | 09 12 12 043-27 | base | 1 | 60 |
| 4 | 09 14 10 017 90 | seal | 1 | 2 |
| 5 | 09 31 11 294 90 | pin | 1 | 2 |
| 6 | 09 27 98 039-27 | rosette | 1 | 60 |
| 7 | 90 21 02 181 00 90 | disc | 1 | 2 |
| 8 | 90 90 03 306 10 90 | diverter | 1 | 2 |