


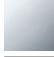

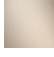


CL.1 Concealed two-way diverter - Dark Chrome

CL.1

36 201 705

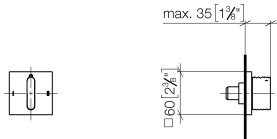


- with WAVES structure
- rotary diverter
- rosette 60 x 60 mm
- with shut-off function

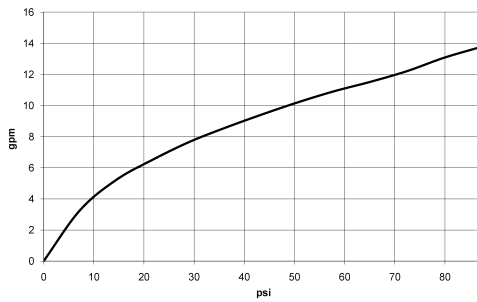
| | | |
|---|-------------------------------|--------------------|
|  | Dark Chrome | 36 201 705-19 0010 |
|  | Chrome | 36 201 705-00 0010 |
|  | Brushed Platinum | 36 201 705-06 0010 |
|  | Brushed Champagne (22kt Gold) | 36 201 705-46 0010 |
|  | Champagne (22kt Gold) | 36 201 705-47 0010 |
|  | Brushed Dark Platinum | 36 201 705-99 0010 |

36 201 705

mm [inches]



Flow rate chart

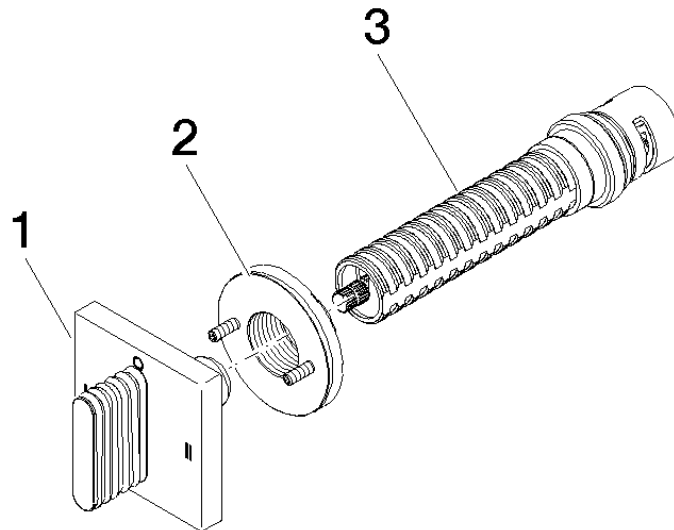


Codes & Standards

California Energy
Commission
(CEC)

36 201 705

Parts for other finishes can be found here: [Chrome](#)



Spare parts list

| No. | Item Number | Name | Quantity used | Delivery time |
|-----|--------------------|----------|---------------|---------------|
| 1 | 90 20 70 055 09-19 | handle | 1 | 20 |
| 2 | 90 21 02 181 00 90 | disc | 1 | 2 |
| 3 | 90 90 03 306 10 90 | diverter | 1 | 2 |