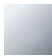


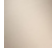




36 210 980



- rotary diverter
- rosette 60 x 60 mm
- with shut-off function

|   |                                |                    |
|---|--------------------------------|--------------------|
|  | Chrome                         | 36 210 980-00 0010 |
|  | Brushed Platinum               | 36 210 980-06 0010 |
|  | Brushed Durabronze (23kt Gold) | 36 210 980-28 0010 |
|  | Brushed Champagne (22kt Gold)  | 36 210 980-46 0010 |
|  | Champagne (22kt Gold)          | 36 210 980-47 0010 |
|  | Brushed Dark Platinum          | 36 210 980-99 0010 |

**Required miscellaneous**



- Concealed three-way diverter -** 35 203 970-90  
 •max. recess depth 160 mm 0010  
 •min. recess depth 85 mm

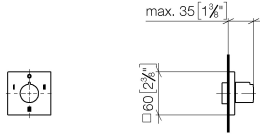


## SYMETRICS Concealed three-way diverter - Chrome

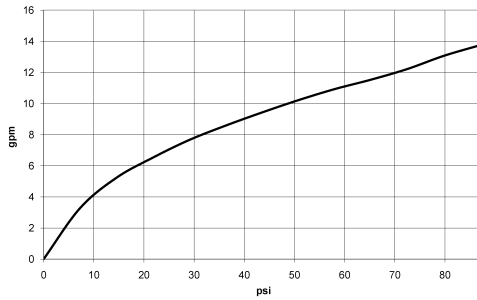
IMO

36 210 980

mm [inches]



### Flow rate chart



### Codes & Standards

California Energy  
Commission  
(CEC)



## SYMETRICS Concealed three-way diverter - Chrome

---

IMO

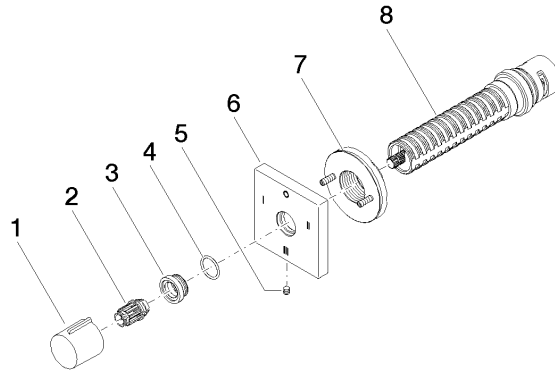
36 210 980

### Certificates

---

IAPMO\_4976 (7).

36 210 980



**Spare parts list**

| No. | Item Number        | Name       | Quantity used | Delivery time |
|-----|--------------------|------------|---------------|---------------|
| 1   | 09 20 98 001-00    | handle     | 1             | 10            |
| 2   | 09 12 12 005 90    | fixing cap | 1             | 2             |
| 3   | 09 12 12 043-00    | base       | 1             | 10            |
| 4   | 09 14 10 017 90    | seal       | 1             | 2             |
| 5   | 09 31 11 294 90    | pin        | 1             | 2             |
| 6   | 09 27 98 040-00    | rosette    | 1             | 60            |
| 7   | 90 21 02 181 00 90 | disc       | 1             | 2             |
| 8   | 90 90 03 305 10 90 | diverter   | 1             | 2             |