

**SYMETRICS xTOOL Concealed thermostat without volume control -  
Champagne (22kt Gold)**

MEM


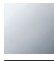

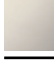


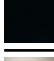
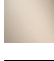
36 416 985



- cover plate 120 x 120 mm
  - temperature control handle with safety limit stop at 38°C
- Note: Important! The minimum recess depths make it necessary to have a wall of 2 x 6 crosspieces.**

Note: Important! The minimum recess depths make it necessary to have a wall of 2 x 6 crosspieces.

Fits: MEM, CL.1

	Champagne (22kt Gold)	36 416 985-47
	Chrome	36 416 985-00
	Brushed Platinum	36 416 985-06
	Platinum	36 416 985-08
	Dark Chrome	36 416 985-19
	Brushed Durabronze (23kt Gold)	36 416 985-28
	Matte Black	36 416 985-33
	Brushed Champagne (22kt Gold)	36 416 985-46
	Brushed Dark Platinum	36 416 985-99

**Required miscellaneous**

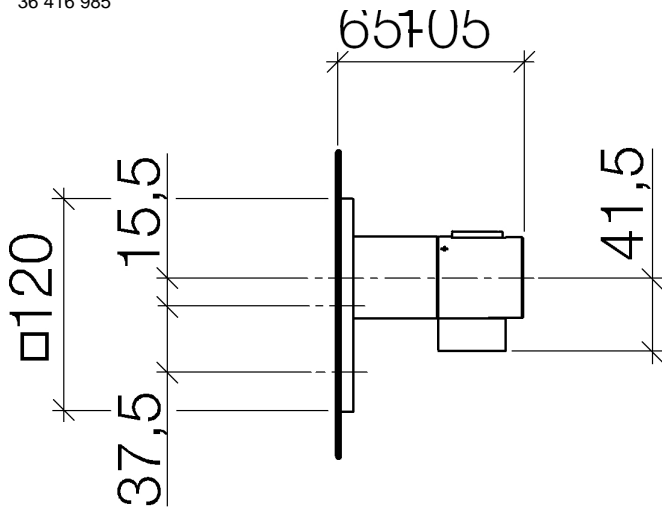


**xTOOL Concealed thermostat module -**

35 517 970-90  
0010

- max. recess depth 156 mm
- min. recess depth 80 mm

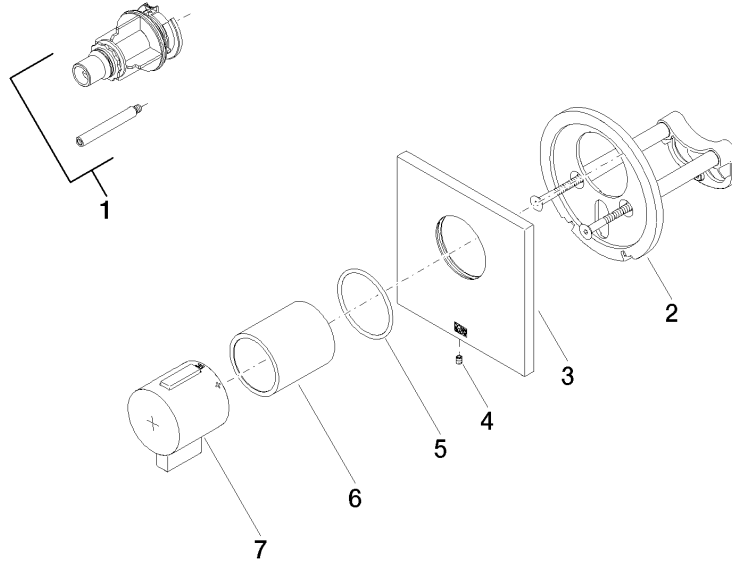
36 416 985



Certificates

IAPMO\_4976 (5).

36 416 985



**Spare parts list**

No.	Item Number	Name	Quantity used	Delivery time
1	12 178 970 90	Extension 46 mm -	1	2
2	90 11 01 196 00 90	base	1	2
3	90 11 02 533 00-47	cover	1	30
4	09 31 11 044 90	pin	1	2
5	90 14 10 049 00 90	seal	1	2
6	90 21 02 112 00-47	sleeve	1	30
7	90 17 33 019 00-47	handle	1	30