

Concealed thermostat with two function volume control - Brushed Platinum

IMO

36 426 670



- rotary diverter with volume control and shut-off function
- cover plate 150 x 90 mm
- temperature control handle with safety limit stop at 38°C
- hot water temperature limiter, can be preset
- single flow function only

Fits: IMO, MEM, CL.1, CYO

	Brushed Platinum	36 426 670-06 0010
	Chrome	36 426 670-00 0010
	Platinum	36 426 670-08 0010
	Dark Chrome	36 426 670-19 0010
	Brushed Light Gold	36 426 670-27 0010
	Brushed Durabronz (23kt Gold)	36 426 670-28 0010
	Matte Black	36 426 670-33 0010
	Brushed Champagne (22kt Gold)	36 426 670-46 0010
	Champagne (22kt Gold)	36 426 670-47 0010
	Brushed Chrome	36 426 670-93 0010
	Brushed Dark Platinum	36 426 670-99 0010

Required miscellaneous



Concealed thermostat for one- and two-way outlets - 35 426 970-90 0010
 ● max. recess depth 136 mm
 ● min. recess depth 80 mm

Recommended miscellaneous



xGRID Attachment set for integrating in the dry wall construction - 12 340 970 90

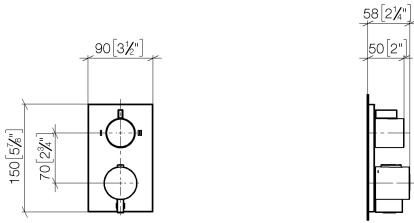
Required miscellaneous



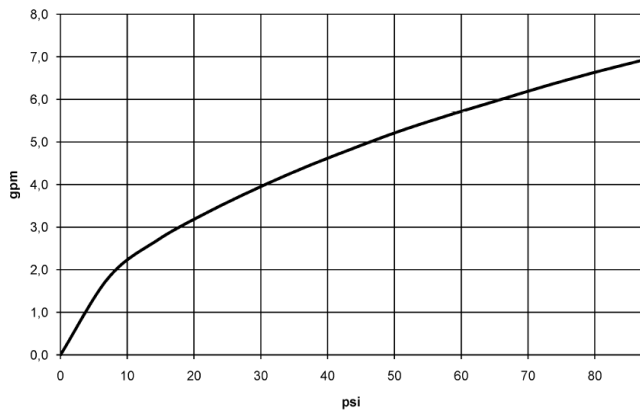
xGRID Installation track 555 mm - 12 360 970 90

36 426 670

mm [inches]



Flow rate chart



Codes & Standards

ADA

ASME A112.18.1

ASME
A112.18.1/CSA
B125.1

California Energy
Commission
(CEC)

cUPC



Concealed thermostat with two function volume control - Brushed Platinum

IMO

36 426 670

Certificates

IAPMO_4976

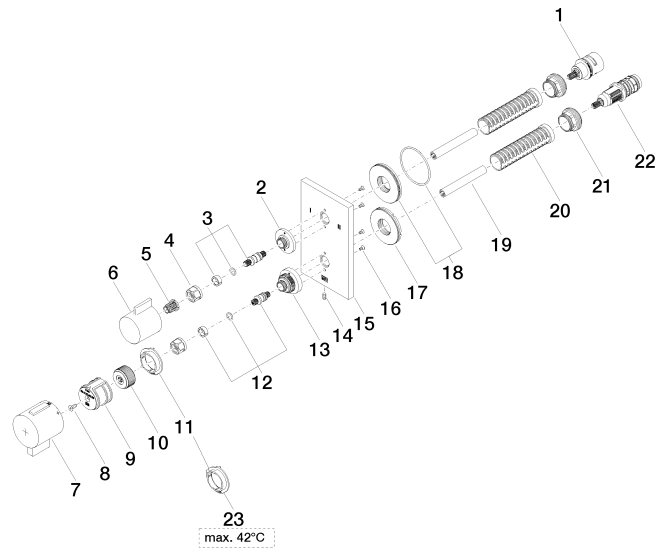
36 426 670

Product version up to 8/24/2020

Product version from 8/24/2020 to 2/1/2021

Product version from 2/1/2021 to 6/30/2022

Product version from 6/30/2022





Concealed thermostat with two function volume control - Brushed Platinum

IMO

36 426 670

Spare parts list

Product version up to 8/24/2020

Product version from 8/24/2020 to 2/1/2021

Product version from 2/1/2021 to 6/30/2022

Product version from 6/30/2022

No.	Item Number	Name	Quantity used	Delivery time
	90 90 03 163 00 90	diverter	30	2