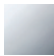


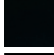

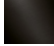


36 426 845



- rotary diverter with volume control and shut-off function
- cover plate 150 x 90 mm
- temperature control handle with safety limit stop at 38°C
- hot water temperature limiter, can be preset
- single flow function only

|                                                                                   |                       |                    |
|-----------------------------------------------------------------------------------|-----------------------|--------------------|
|  | Chrome                | 36 426 845-00 0010 |
|  | Brushed Platinum      | 36 426 845-06 0010 |
|  | Dark Chrome           | 36 426 845-19 0010 |
|  | Matte Black           | 36 426 845-33 0010 |
|  | Brushed Chrome        | 36 426 845-93 0010 |
|  | Brushed Dark Platinum | 36 426 845-99 0010 |

**Required miscellaneous**



**Concealed thermostat for one- and two-way outlets -** 35 426 970-90 0010  
 • max. recess depth 136 mm  
 • min. recess depth 80 mm

**Recommended miscellaneous**



**xGRID Attachment set for integrating in the dry wall construction -** 12 340 970 90

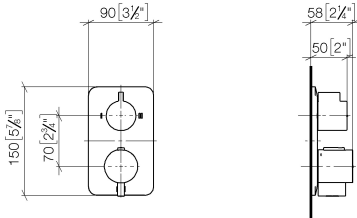
**Required miscellaneous**



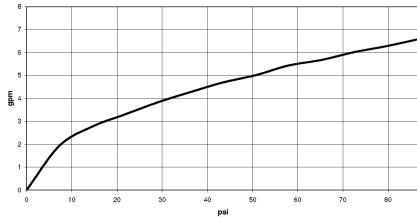
**xGRID Installation track 555 mm -** 12 360 970 90

36 426 845

mm [inches]



**Flow rate chart**



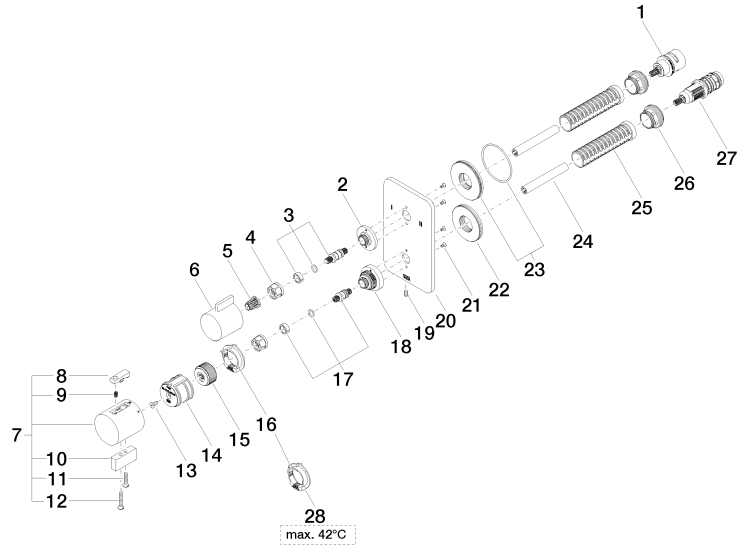
**Codes & Standards**

ADA

ASME  
A112.18.1/CSA  
B125.1

California Energy  
Commission  
(CEC)

36 426 845



36 426 845

Spare parts list

| No. | Item Number        | Name       | Quantity used | Delivery time |
|-----|--------------------|------------|---------------|---------------|
| 1   | 90 90 03 163 00 90 | diverter   | 1             | 2             |
| 2   | 09 12 12 053-00    | base       | 1             | 10            |
| 3   | 04 29 06 111 01-00 | spindle    | 1             | 10            |
| 4   | 90 23 30 023 00 90 | nut        | 2             | 2             |
| 5   | 90 12 12 002 00 90 | fixing cap | 1             | 2             |
| 6   | 09 20 67 006-00    | handle     | 1             | 10            |
| 7   | 04 17 33 006 00-00 | handle     | 1             | 60            |
| 8   | 90 21 33 011 00-13 | handle     | 1             | 2             |
| 9   | 90 16 02 027 00 90 | spring     | 1             | 2             |
| 10  | 09 20 33 006-00    | handle     | 1             | 10            |
| 11  | 09 30 30 159-00    | screw      | 1             | 10            |
| 12  | 09 30 30 160-00    | screw      | 1             | 10            |
| 13  | 90 30 30 124 00 90 | screw      | 1             | 2             |
| 14  | 90 12 12 052 00 90 | base       | 1             | 2             |
| 15  | 09 12 12 054 90    | base       | 1             | 2             |
| 16  | 09 28 10 152 90    | regulator  | 1             | 60            |
| 17  | 04 29 06 024 01-00 | spindle    | 1             | 10            |
| 18  | 09 12 12 051-00    | base       | 1             | 10            |
| 19  | 09 31 11 134 90    | pin        | 1             | 2             |
| 20  | 09 11 02 303-00    | plate      | 1             | 10            |
| 21  | 09 30 30 157 90    | screw      | 4             | 2             |
| 22  | 09 30 01 188 90    | disc       | 1             | 60            |
| 23  | 90 30 01 190 00 90 | disc       | 1             | 2             |
| 24  | 90 23 01 124 00 90 | sleeve     | 2             | 2             |
| 25  | 90 18 40 077 01 90 | spindle    | 2             | 2             |
| 26  | 09 24 04 257 90    | nut        | 2             | 2             |
| 27  | 90 15 02 012 00 90 | cartridge  | 1             | 60            |
| 28  | 09 28 10 151 90    | regulator  | 1             | 60            |