

Wall valve clockwise closing cold 1/2" - Brushed Champagne (22kt Gold)

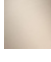





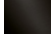
CL.1

36 607 716


- rosette 60 x 60 mm
- with cold marking
- head part with cut-to-length spindle and sleeve



Fits: CL.1, CYO

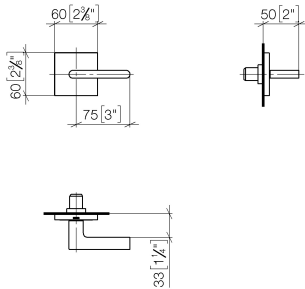
	Brushed Champagne (22kt Gold)	36 607 716-46
	Chrome	36 607 716-00
	Brushed Platinum	36 607 716-06
	Dark Chrome	36 607 716-19
	Brushed Durabronze (23kt Gold)	36 607 716-28
	Champagne (22kt Gold)	36 607 716-47
	Brushed Dark Platinum	36 607 716-99

Required miscellaneous

	Wall valve 1/2" - •max. recess depth 150 mm •min. recess depth 105 mm	35 607 970-90 0010
---	--	-----------------------

36 607 716

mm [inches]



Codes & Standards

ADA

ASME
A112.18.1/CSA
B125.1

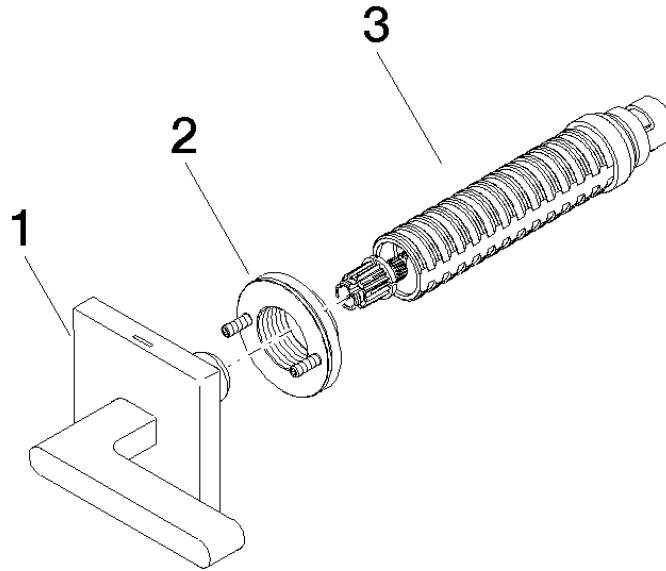
Certificates

DVGW_DW-
6501DN0116.

LGA_29931.

WRAS_2010066.

36 607 716



Spare parts list

No.	Item Number	Name	Quantity used	Delivery time
1	90 20 70 057 04-46	handle (cold)	1	30
2	90 21 02 108 00 90	disc	1	2
3	90 90 03 143 00 90	top	1	2