

36 608 371

• WRAS 2010066

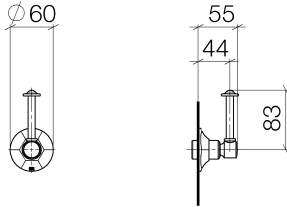




# MADISON Wall valve clockwise closing 3/4" - Chrome

MADISON

36 608 371



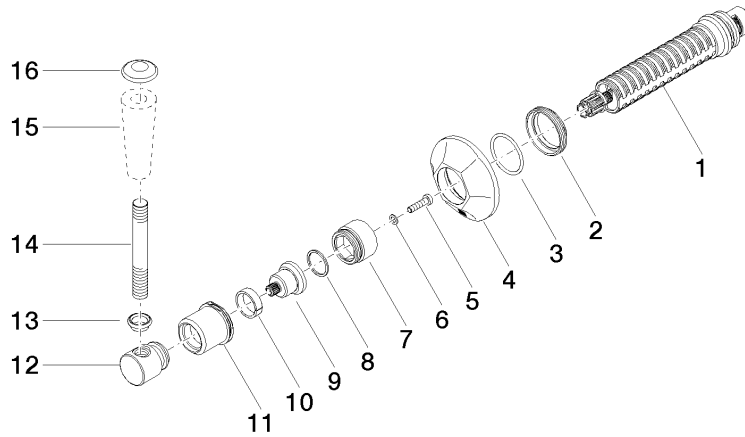
## Codes & Standards

ADA	ASME A112.18.1	ASME A112.18.1/CSA B125.1	cUPC
Scottish Water Byelaws	UK Water Supply Regulations		

## Certificates

IAPMO_4976	WRAS_2010
------------	-----------

36 608 371





MADISON Wall valve clockwise closing 3/4" - Chrome

MADISON

36 608 371

**Spare parts list**

No.	Item Number	Name	Quantity used	Delivery time
	90 90 03 127 00 90	top	16	2