

META Wall-mounted single-lever basin mixer without pop-up waste - Brushed Bronze

META


36 804 661



- 160mm projection
- fixed spout
- circular, air-enriched flow
- hole diameter 60 mm
- rosette Ø 78 mm
- max. flow 4.5 l/min
- lead-free
- with single-point mounting
- This product can help a building meet the requirements of Green Building Rating Systems, e.g. LEED®, BREEAM®, DGNB

	Brushed Bronze	36 804 661-42 0010
	Chrome	36 804 661-00 0010
	Brushed Platinum	36 804 661-06 0010
	Dark Chrome	36 804 661-19 0010
	Light Gold	36 804 661-26 0010
	Brushed Light Gold	36 804 661-27 0010
	Matte Black	36 804 661-33 0010
	Brushed Champagne (22kt Gold)	36 804 661-46 0010
	Champagne (22kt Gold)	36 804 661-47 0010
	Brushed Chrome	36 804 661-93 0010
	Brushed Dark Platinum	36 804 661-99 0010

Required miscellaneous

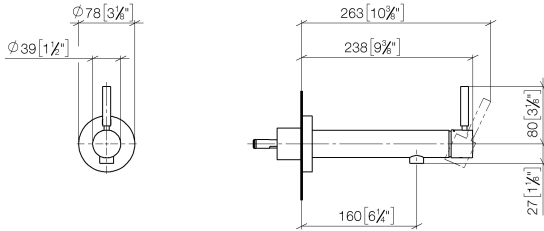
	Concealed wall mounting - •min. recess depth 78 mm •max. recess depth 103 mm	35 003 970-90 0010
---	---	-----------------------



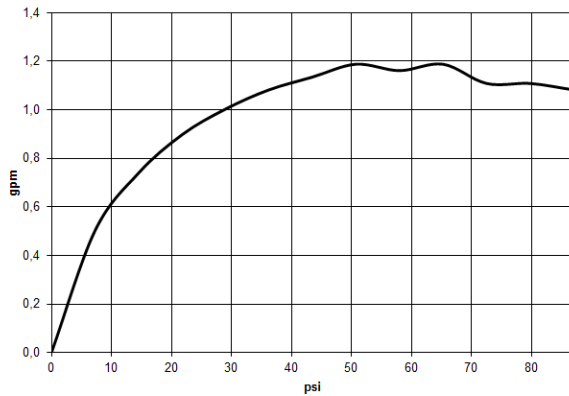
META Wall-mounted single-lever basin mixer without pop-up waste - Brushed Bronze

META

36 804 661
mm [inches]



Flow rate chart



Codes & Standards

ADA	ASME A112.18.1/CSA B125.1	California Energy Commission (CEC)	NSF/ANSI 372
NSF/ANSI/CAN 61	NSF372	NSF61	



**META Wall-mounted single-lever basin mixer without pop-up waste - Brushed
Bronze**

META

36 804 661

Certificates

IAPMO_6397

IAPMO_N-4976

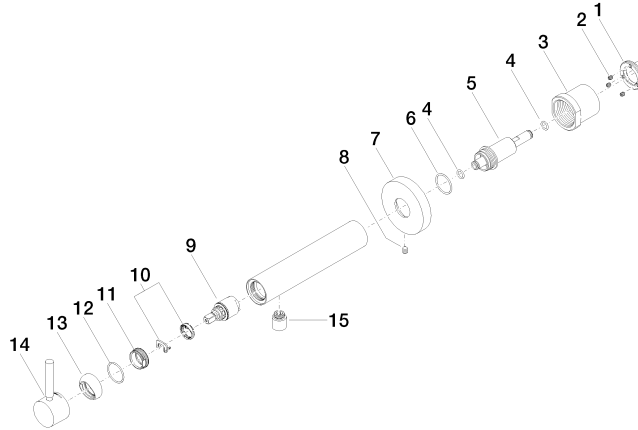


META Wall-mounted single-lever basin mixer without pop-up waste - Brushed Bronze

META

36 804 661

Product version from 4/2/2020





META Wall-mounted single-lever basin mixer without pop-up waste - Brushed
Bronze

META

36 804 661

Spare parts list

Product version from 4/2/2020