

**META Wall-mounted single-lever basin mixer without pop-up waste -
Champagne (22kt Gold)**

META

36 804 661



- 160mm projection
- fixed spout
- circular, air-enriched flow
- hole diameter 60 mm
- rosette Ø 78 mm
- max. flow 4.5 l/min
- lead-free
- with single-point mounting
- This product can help a building meet the requirements of Green Building Rating Systems, e.g. LEED®, BREEAM®, DGNB

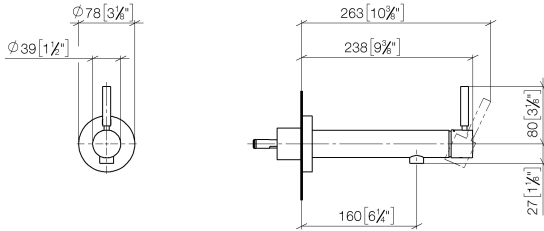
| | | |
|--|-------------------------------|--------------------|
|  | Champagne (22kt Gold) | 36 804 661-47 0010 |
|  | Chrome | 36 804 661-00 0010 |
|  | Brushed Platinum | 36 804 661-06 0010 |
|  | Dark Chrome | 36 804 661-19 0010 |
|  | Light Gold | 36 804 661-26 0010 |
|  | Brushed Light Gold | 36 804 661-27 0010 |
|  | Matte Black | 36 804 661-33 0010 |
|  | Brushed Bronze | 36 804 661-42 0010 |
|  | Brushed Champagne (22kt Gold) | 36 804 661-46 0010 |
|  | Brushed Chrome | 36 804 661-93 0010 |
|  | Brushed Dark Platinum | 36 804 661-99 0010 |



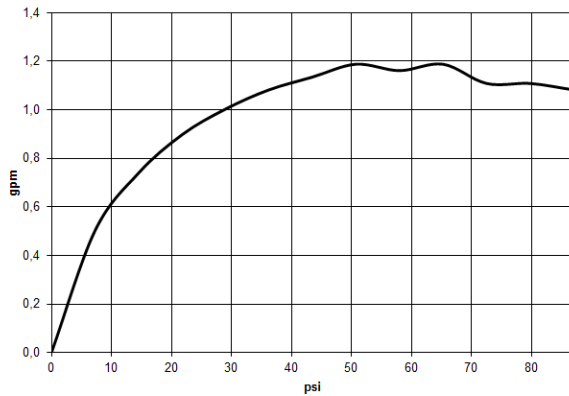
META Wall-mounted single-lever basin mixer without pop-up waste - Champagne (22kt Gold)

META


36 804 661
mm [inches]



Flow rate chart



Codes & Standards

| | | | |
|--------------|--|--|----------------|
| ADA | ASME A112.18.1/CSA B125.1 | California Energy Commission (CEC) | EPA WaterSense |
| NSF/ANSI 372 | NSF/ANSI/CAN 61 | NSF372 | NSF61 |
| Water Sense | WaterSense  | | |



**META Wall-mounted single-lever basin mixer without pop-up waste -
Champagne (22kt Gold)**

META

36 804 661

Certificates

IAPMO_8834

IAPMO_6397

IAPMO_N-4976



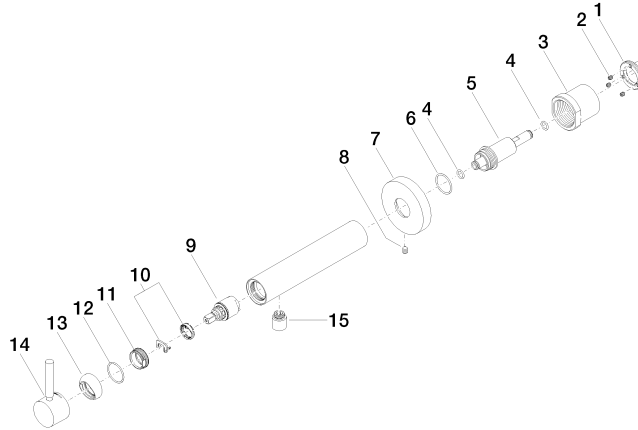
META Wall-mounted single-lever basin mixer without pop-up waste - Champagne (22kt Gold)

META

36 804 661

Product version from 4/2/2020

Parts for other
finishes can be found
here: [Chrome](#)





META Wall-mounted single-lever basin mixer without pop-up waste -
Champagne (22kt Gold)

META

36 804 661

Spare parts list

Product version from 4/2/2020