




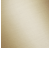


CL.1 Wall-mounted single-lever basin mixer without pop-up waste - Dark Chrome

CL.1

36 860 705



- 198mm projection
- fixed spout
- rectangular spray pattern with 40 individual jets
- hole diameter spout 37 mm
- hole diameter single-lever mixer 57 mm
- rosette 80 x 80 mm
- max. flow 4.5 l/min
- lead-free
- This product can help a building meet the requirements of Green Building Rating Systems, e.g. LEED®, BREEAM®, DGNB

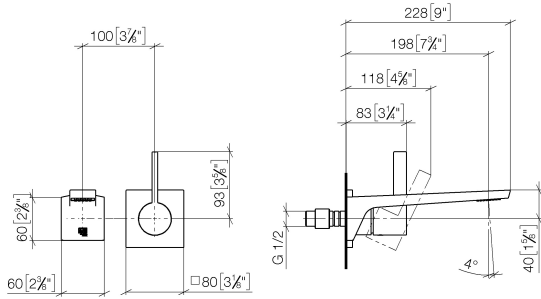
	Dark Chrome	36 860 705-19
	Chrome	36 860 705-00
	Brushed Platinum	36 860 705-06
	Brushed Champagne (22kt Gold)	36 860 705-46
	Champagne (22kt Gold)	36 860 705-47
	Brushed Dark Platinum	36 860 705-99



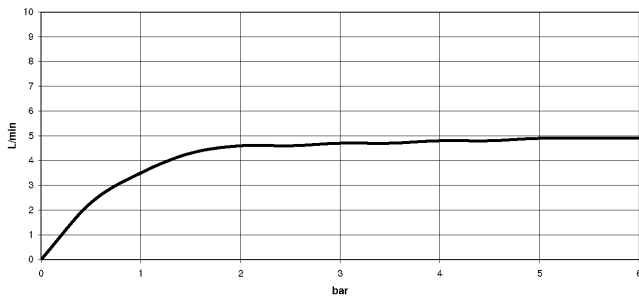
CL.1 Wall-mounted single-lever basin mixer without pop-up waste - Dark Chrome

CL.1

36 860 705
mm [inches]



Flow rate chart



Codes & Standards

ADA	ASME A112.18.1/CSA B125.1	California Energy Commission (CEC)	EN 817
NSF/ANSI 372	NSF/ANSI/CAN 61	NSF372	NSF61



CL.1 Wall-mounted single-lever basin mixer without pop-up waste - Dark
Chrome

CL.1

36 860 705

Certificates

IAPMO_6397

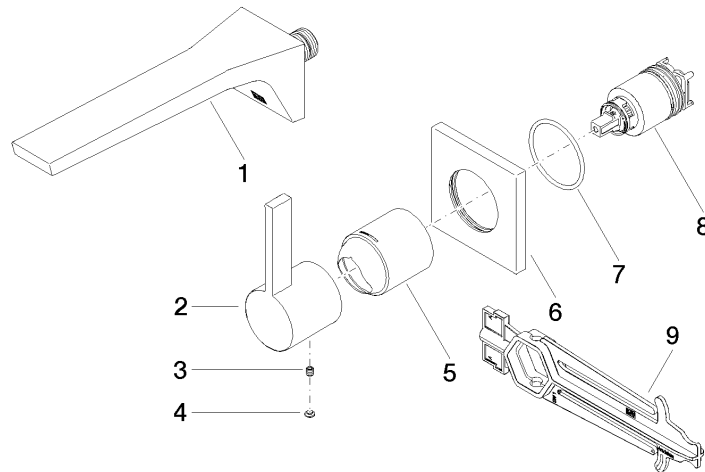
IAPMO_N-4976

DVGW_DW-
6512DN0

36 860 705

Product version from 7/1/2023

Parts for other
finishes can be found
here: [Chrome](#)





CL.1 Wall-mounted single-lever basin mixer without pop-up waste - Dark Chrome

CL.1

36 860 705

Spare parts list

Product version from 7/1/2023

No.	Item Number	Name	Quantity used	Delivery time
	13 800 705-19	CL.1 Wall-mounted basin spout without pop-up waste - Dark Chrome	9	20