

## Cover plate for the concealed WC cistern made by TeCe - Matte Black

12 660 979 Product version from 5/27/2021



- cover plate 150 x 240 x 15 mm
- flush handle with rotary operation and two-volume technology (full flush/partial flush)

**This product is compatible with the following TECE products:**

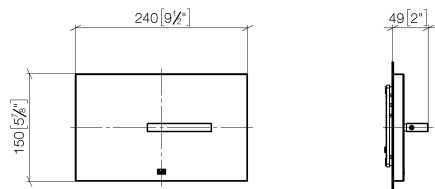
- TECEprofil dry wall construction, article numbers:  
9300300, 9300322, 9300301, 9300344, 9300309, 9300303, 9300388, 9300366, 9300102, 9300103, 9300329, 9300377, 9300378, 9400302, 9400303, 9400304, 9041335, 9041336, 9041337
- TECEbox wet wall construction, article numbers:  
9370300, 9375300, 9371300

|   |                                     |               |
|---|-------------------------------------|---------------|
|    | Matte Black                         | 12 660 979-33 |
|    | Chrome                              | 12 660 979-00 |
|    | Brushed Platinum                    | 12 660 979-06 |
|    | Platinum                            | 12 660 979-08 |
|    | Dark Chrome                         | 12 660 979-19 |
|    | Light Gold                          | 12 660 979-26 |
|    | Brushed Light Gold                  | 12 660 979-27 |
|    | Brushed Durabronze<br>(23kt Gold)   | 12 660 979-28 |
|    | Brushed Bronze                      | 12 660 979-42 |
|    | Brushed<br>Champagne (22kt<br>Gold) | 12 660 979-46 |
|   | Champagne (22kt<br>Gold)            | 12 660 979-47 |
|  | Brushed Chrome                      | 12 660 979-93 |
|  | Brushed Dark<br>Platinum            | 12 660 979-99 |

## Cover plate for the concealed WC cistern made by TeCe - Matte Black

12 660 979 Product version from 5/27/2021

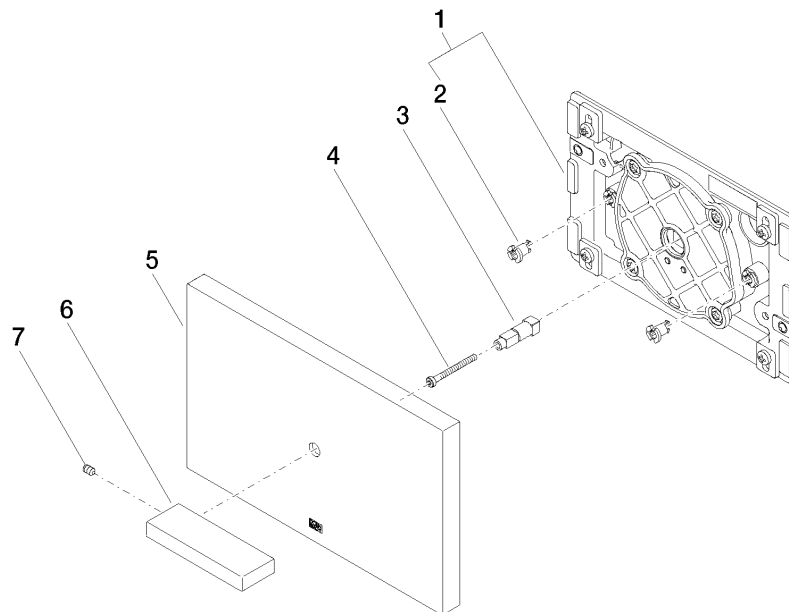
mm [inches]



## Cover plate for the concealed WC cistern made by TeCe - Matte Black

12 660 979 Product version from 5/27/2021

Parts for other  
finishes can be found  
here: [Chrome](#)



### Spare parts list

| No.  | Item Number        | Name   | Quantity used | Delivery time |
|--|--------------------|--------|---------------|---------------|
| 1  | 04 28 01 053 00 90 | plate  | 1             | 2             |
| 2  | 90 18 40 295 00 90 | sleeve | 1             | 2             |
| 3  | 09 18 20 038 90    | base   | 1             | 2             |
| 4  | 09 30 30 086 90    | screw  | 1             | 2             |
| 5  | 09 11 01 179-33    | cover  | 1             | -             |
| Spare part can no longer be ordered, please order the replacement item |                    |        |               |               |
| 6  | 09 20 97 057-33    | handle | 1             | 30            |
| 7  | 09 31 11 058 90    | pin    | 1             | 2             |