

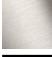






CYO Deck-mounted basin spout without pop-up waste - Dark Chrome CYO

13 715 811

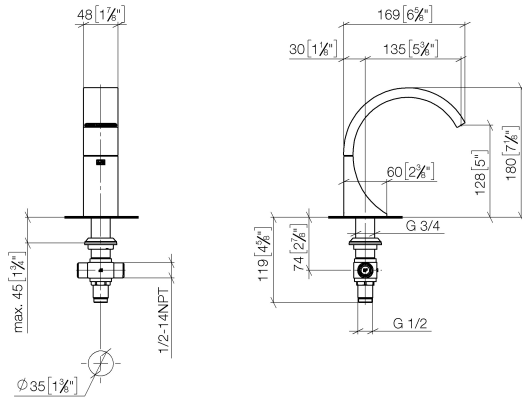


- 133mm projection
- fixed spout
- rectangular, air-enriched flow
- height of mixer 180 mm
- height up to aerator 128 mm
- hole diameter 35 mm
- 2x 1/2" x 1/2" high pressure hose
- max. flow 4.5 l/min
- lead-free
- This product can help a building meet the requirements of Green Building Rating Systems, e.g. LEED®, BREEAM®, DGNB
- WRAS

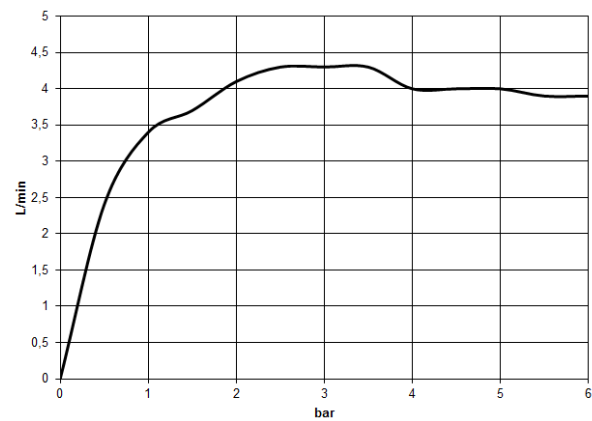
| | | |
|---|---|---------------|
|  | Dark Chrome | 13 715 811-19 |
|  | Chrome | 13 715 811-00 |
|  | Brushed Platinum | 13 715 811-06 |
|  | Brushed Durabronze (23kt Gold) | 13 715 811-28 |
|  | Platinum / Brushed Platinum | 13 715 811-36 |
|  | Durabronze / Brushed Durabronze (23kt Gold) | 13 715 811-38 |
|  | Brushed Dark Platinum | 13 715 811-99 |

13 715 811

mm [inches]



Flow rate chart



Codes & Standards

ASME A112.18.1

cUPC

NSF372

NSF61



CYO Deck-mounted basin spout without pop-up waste - Dark Chrome

CYO

13 715 811

Certificates and sustainability

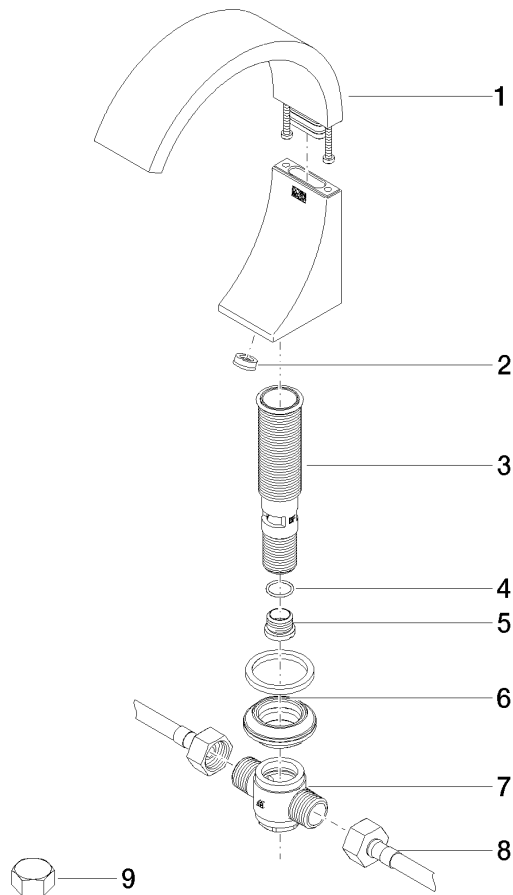
IAPMO_N-4

IAPMO_4976

IAPMO_6

13 715 811

Parts for other
finishes can be found
here: [Chrome](#)



Spare parts list

| No. | Item Number | Name | Quantity used | Delivery time |
|-----|--------------------|--------------|---------------|---------------|
| 5 | 09 24 04 021 10 90 | nipple | 1.00 | 2 |
| 9 | 04 21 02 006 00 92 | cap | 2.00 | 2 |
| 4 | 09 14 10 017 90 | seal | 1.00 | 2 |
| 7 | 90 17 11 020 10 90 | distributor | 1.00 | 2 |
| 3 | 90 30 01 033 00 90 | base | 1.00 | 2 |
| 6 | 04 23 10 044 09 90 | fixing set | 1.00 | 2 |
| 8 | 04 30 04 096 00 90 | hose | 2.00 | 2 |
| 2 | 09 23 01 163 90 | flow reducer | 1.00 | 2 |
| 1 | 90 11 70 012 00-19 | spout | 1.00 | 20 |