

## Deck-mounted basin spout without pop-up waste - Chrome

13 716 882 Product version from 3/13/2017



- 166mm projection
- pivotable spout 360°
- circular, air-enriched flow
- height of mixer 285 mm
- height up to aerator 163 mm
- hole diameter 35 mm
- rosette Ø 60 mm
- 2x screw-in M 10 x 1 pressure hose, leak-tested
- 1/2" connection
- max. flow 7 l/min
- lead-free
- This product can help a building meet the requirements of Green Building Rating Systems, e.g. LEED®, BREEAM®, DGNB
- WRAS

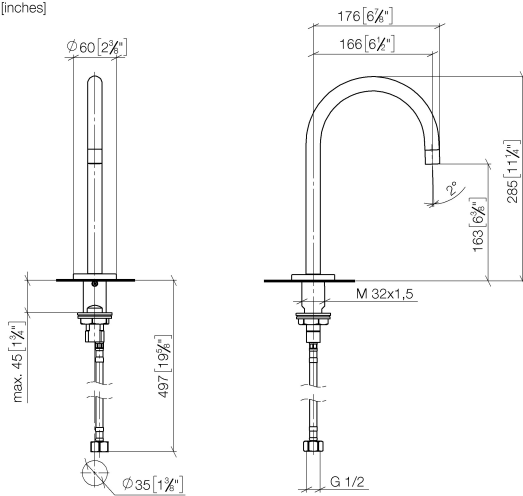
For Touchfree control please order eSet Touchfree with temperature adjustment

	Chrome	13 716 882-00
	Dark Chrome	13 716 882-19
	Brushed Durabrass (23kt Gold)	13 716 882-28
	Brushed Bronze	13 716 882-42
	Brushed Champagne (22kt Gold)	13 716 882-46
	Champagne (22kt Gold)	13 716 882-47
	Brushed Chrome	13 716 882-93
	Brushed Dark Platinum	13 716 882-99

## Deck-mounted basin spout without pop-up waste - Chrome

13 716 882 Product version from 3/13/2017

mm [inches]



### Flow rate chart



### Codes & Standards

DIN 4109

Executive Order  
no. 1007

ISO 3822

Scottish Water  
Byelaws

UK Water Supply  
Regulations

Ü-Zeichen



Deck-mounted basin spout without pop-up waste - Chrome

---

13 716 882    Product version from 3/13/2017

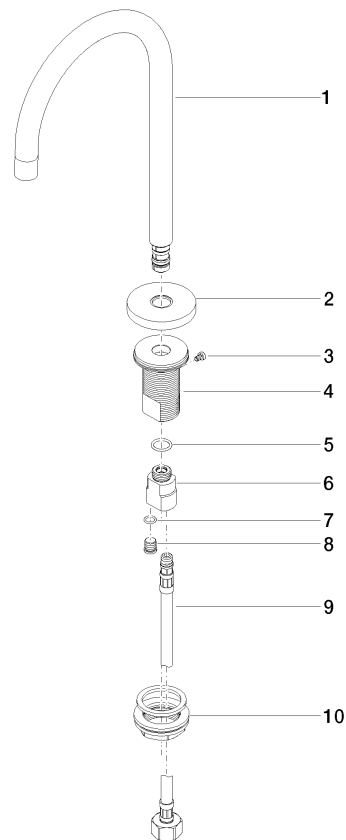
Certificates

---

LGA_29	WRAS_1909	GDV_0400
--------	-----------	----------

**Deck-mounted basin spout without pop-up waste - Chrome**

13 716 882 Product version from 3/13/2017



**Spare parts list**

No.	Item Number	Name	Quantity used	Delivery time
1	90 28 22 319 00-00	spout	1	10
2	09 27 89 114-00	rosette	1	10
3	09 30 30 037 90	screw	1	2
4	09 30 22 027 90	connection	1	60
5	09 14 10 130 90	seal	1	2
6	09 11 10 055 10 90	connection	1	2
7	90 14 10 060 00 90	seal	1	2
8	09 31 20 065 90	plug	1	2
9	04 30 04 019 00 90	hose	1	2
10	04 23 10 009 01 90	fixing set	1	2