








CYO Wall-mounted basin spout without pop-up waste - Brushed Platinum

CYO

13 800 811



- 160mm projection
- fixed spout
- rectangular, air-enriched flow
- hole diameter 37 mm
- 1/2" connection
- max. flow 4.5 l/min
- lead-free
- This product can help a building meet the requirements of Green Building Rating Systems, e.g. LEED®, BREEAM®, DGNB

	Brushed Platinum	13 800 811-06
	Chrome	13 800 811-00
	Dark Chrome	13 800 811-19
	Brushed Durabronze (23kt Gold)	13 800 811-28
	Platinum / Brushed Platinum	13 800 811-36
	Durabronze / Brushed Durabronze (23kt Gold)	13 800 811-38
	Brushed Dark Platinum	13 800 811-99

Recommended miscellaneous



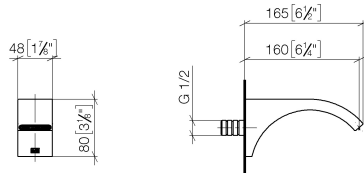
Concealed wall elbow -

35 085 970 90

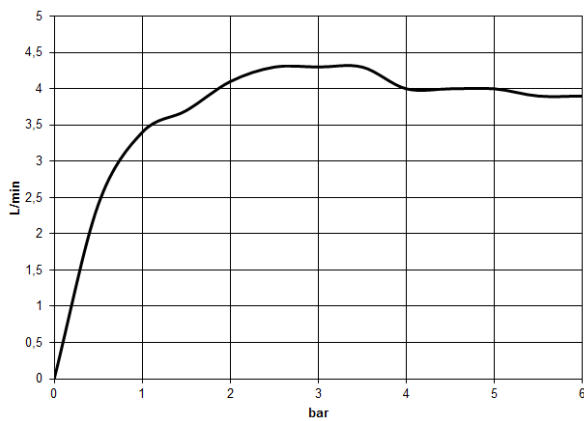
- max. recess depth 163 mm
- min. recess depth 90 mm

13 800 811

mm [inches]



Flow rate chart



Codes & Standards

ASME A112.18.1	cUPC	DIN 4109	EPA WaterSense
ISO 3822	NSF372	NSF61	Ü-Zeichen

WaterSense





CYO Wall-mounted basin spout without pop-up waste - Brushed Platinum

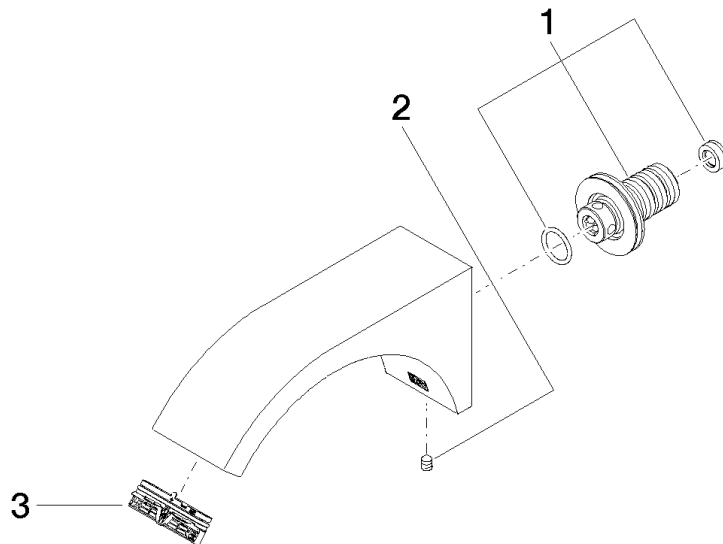
CYO

13 800 811

Certificates and sustainability

LGA_38	IAPMO_N-4	IAPMO_4976	IAPMO_8834	IAPMO_6
--------	-----------	------------	------------	---------

13 800 811



Spare parts list

No.	Item Number	Name	Quantity used	Delivery time
1	90 24 03 108 01 90	nipple set	1.00	2
3	90 29 03 121 00 90	aerator	1.00	2
2	90 31 11 004 00 90	pin	1.00	2