

META Bath spout for wall mounting - Matte Black

META

13 801 660
Product version up to 5/27/2021



- 200mm projection
- circular normal flow
- rosette Ø 60 mm
- hole diameter 37 mm
- 1/2" connection
- max. flow 24.6 l/min at 3 bar flow pressure
- WRAS

	Matte Black	13 801 660-33
	Chrome	13 801 660-00
	Brushed Platinum	13 801 660-06
	Dark Chrome	13 801 660-19
	Light Gold	13 801 660-26
	Brushed Light Gold	13 801 660-27
	Brushed Dark Brass	13 801 660-39
	Brushed Bronze	13 801 660-42
	Brushed Champagne (22kt Gold)	13 801 660-46
	Champagne (22kt Gold)	13 801 660-47
	Brushed Chrome	13 801 660-93
	Brushed Dark Platinum	13 801 660-99

Recommended miscellaneous



- Concealed wall elbow -**
• max. recess depth 163 mm
• min. recess depth 90 mm

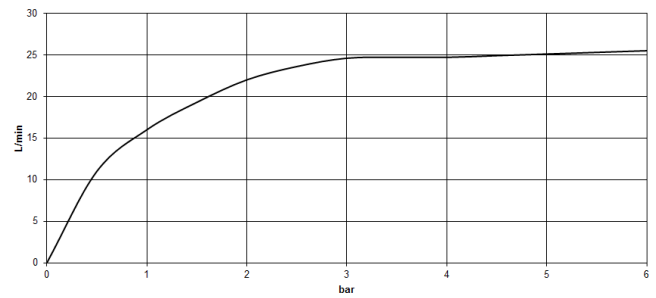
35 085 970 90

13 801 660 Product version up to 5/27/2021

mm [inches]



Flow rate chart



Codes & Standards

ASME A112.18.1	cUPC	DIN 4109	ISO 3822
Scottish Water Byelaws	UK Water Supply Regulations	Ü-Zeichen	



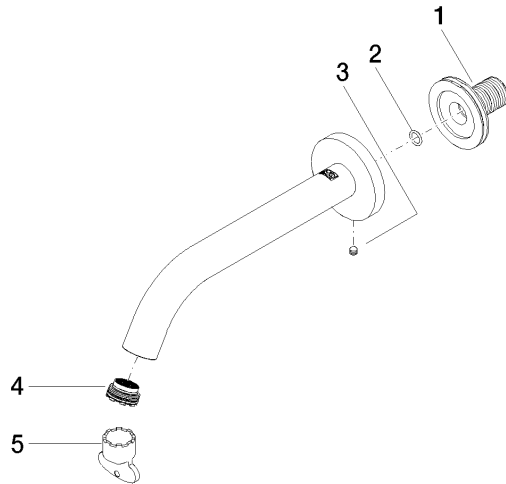
META Bath spout for wall mounting - Matte Black

META

13 801 660 Product version up to 5/27/2021

Certificates and sustainability

IAPMO_4976 LGA_18 WRAS_250402



Spare parts list

No.	Item Number	Name	Quantity used	Delivery time
1	90 24 03 280 00 90	nipple	1.00	2
5	04 30 09 024 00 90	key	1.00	2
4	09 29 03 055 90	aerator	1.00	60
2	90 14 10 060 00 90	seal	1.00	2
3	90 31 11 112 00 90	pin	1.00	2