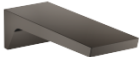


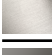





CL.1 Bath spout for wall mounting - Brushed Dark Platinum

13 801 705    Product version from 3/9/2015



- 205mm projection
- rectangular spray pattern with 55 individual jets
- hole diameter 37 mm
- 1/2" connection
- plug-link mounting
- max. flow 24.6 l/min at 3 bar flow pressure
- WRAS

	Brushed Dark Platinum	13 801 705-99
	Chrome	13 801 705-00
	Brushed Platinum	13 801 705-06
	Dark Chrome	13 801 705-19
	Brushed Champagne (22kt Gold)	13 801 705-46
	Champagne (22kt Gold)	13 801 705-47

Recommended miscellaneous



- Concealed wall elbow -

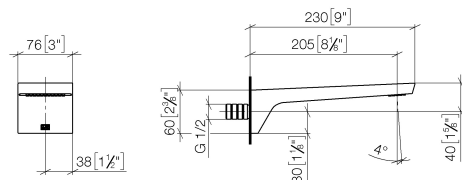
  - max. recess depth mm
  - min. recess depth mm

35 085 970 90

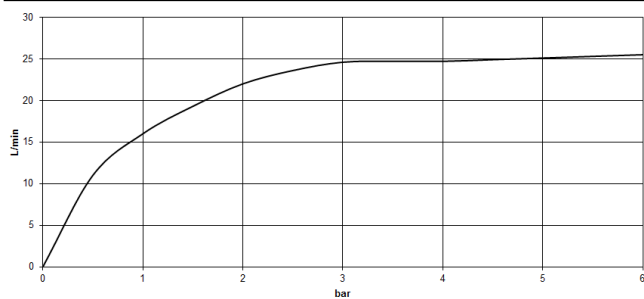
## CL.1 Bath spout for wall mounting - Brushed Dark Platinum

13 801 705 Product version from 3/9/2015

mm [inches]



Flow rate chart



### Codes & Standards

ASME A112.18.1

cUPC

DIN 4109

ISO 3822

Scottish Water  
Byelaws

UK Water Supply  
Regulations

Ü-Zeichen



## CL.1 Bath spout for wall mounting - Brushed Dark Platinum

---

13 801 705 Product version from 3/9/2015

### Certificates

---

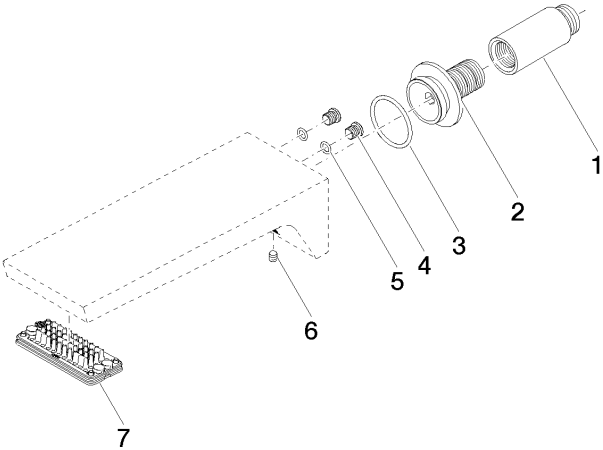
WRAS\_1512

IAPMO\_4976

LGA\_28

# CL.1 Bath spout for wall mounting - Brushed Dark Platinum

13 801 705    Product version from 3/9/2015



## Spare parts list

No.	Item Number	Name	Quantity used	Delivery time
1	09 24 03 081 10 90	extension	1	2
2	09 24 03 180 90	nipple	1	2
3	09 14 10 119 90	seal	1	2
4	09 31 20 027 10-00	plug	2	10
5	09 14 10 132 90	seal	2	2
6	90 31 11 004 00 90	pin	1	2
7	90 11 02 299 00 90	aerator	1	2