






CYO Bath spout for wall mounting - Brushed Platinum

CYO

13 801 811



- 190mm projection
- rectangular, air-enriched flow
- hole diameter 37 mm
- 1/2" connection
- max. flow 23.8 l/min at 3 bar flow pressure

	Brushed Platinum	13 801 811-06
	Chrome	13 801 811-00
	Dark Chrome	13 801 811-19
	Brushed Durabrass (23kt Gold)	13 801 811-28
	Brushed Dark Platinum	13 801 811-99

Recommended miscellaneous



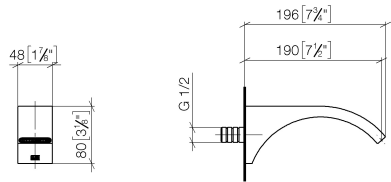
- Concealed wall elbow -**

35 085 970 90

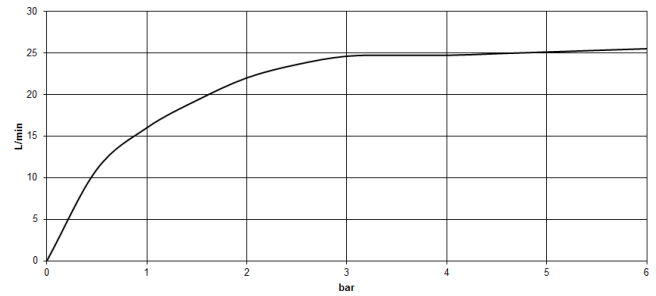
- max. recess depth 163 mm
  - min. recess depth 90 mm

13 801 811

mm [inches]



Flow rate chart



### Codes & Standards

ASME A112.18.1	cUPC	DIN 4109	ISO 3822
----------------	------	----------	----------

### Ü-Zeichen



## CYO Bath spout for wall mounting - Brushed Platinum

---

CYO

13 801 811

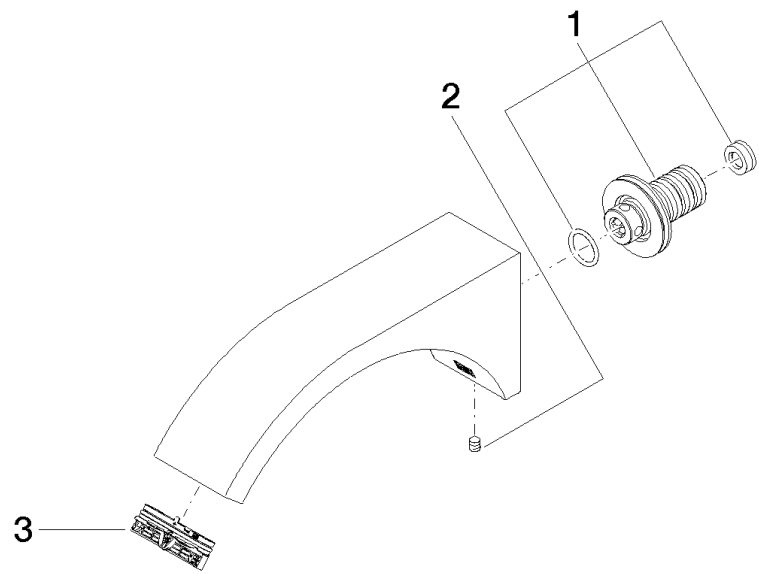
Certificates and sustainability

---

IAPMO\_4976

LGA\_38

13 801 811



Spare parts list

No.	Item Number	Name	Quantity used	Delivery time
1	90 24 03 108 02 90	nipple set	1.00	2
3	90 29 03 121 00 90	aerator	1.00	2
2	90 31 11 004 00 90	pin	1.00	2