

META Pillar tap cold water - Brushed Bronze

META

17 500 661 Product version from 7/1/2023

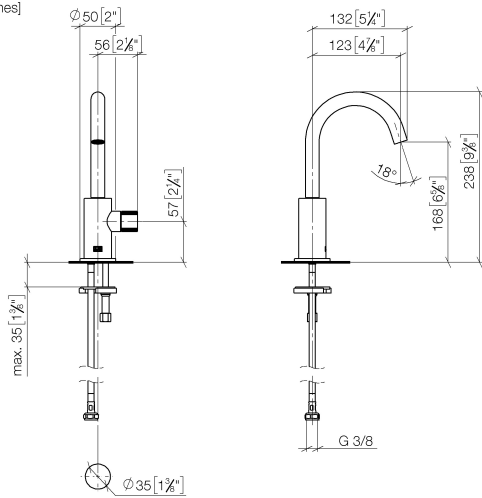


- 123mm projection
- pivotable spout 360°
- circular, air-enriched flow
- height of mixer 238 mm
- height up to aerator 168 mm
- hole diameter 35 mm
- rosette Ø 50 mm
- max. flow 5.7 l/min
- lead-free
- This product can help a building meet the requirements of Green Building Rating Systems, e.g. LEED®, BREEAM®, DGNB
- WRAS

	Brushed Bronze	17 500 661-42
	Chrome	17 500 661-00
	Brushed Platinum	17 500 661-06
	Dark Chrome	17 500 661-19
	Light Gold	17 500 661-26
	Brushed Light Gold	17 500 661-27
	Matte Black	17 500 661-33
	Brushed Dark Brass	17 500 661-39
	Brushed Champagne (22kt Gold)	17 500 661-46
	Champagne (22kt Gold)	17 500 661-47
	Brushed Chrome	17 500 661-93
	Brushed Dark Platinum	17 500 661-99

17 500 661 Product version from 7/1/2023

mm [inches]



Flow rate chart



Codes & Standards

DIN 4109

ISO 3822

Scottish Water
Byelaws

UK Water Supply
Regulations

Ü-Zeichen



META Pillar tap cold water - Brushed Bronze

META

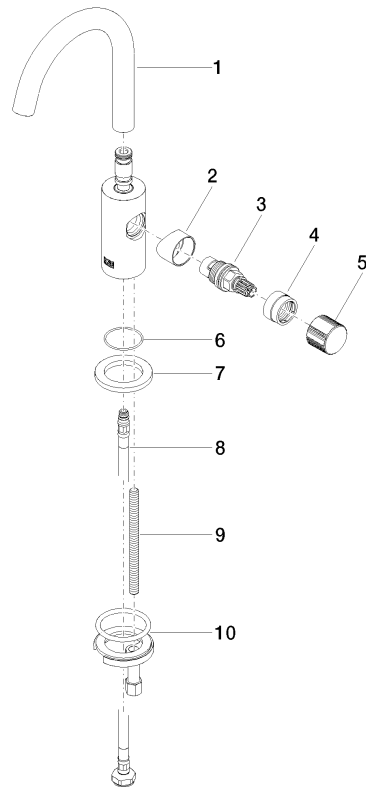
17 500 661 Product version from 7/1/2023

Certificates and sustainability

LGA_18

WRAS_250502

Parts for other
finishes can be found
here: [Chrome](#)



Spare parts list

No.	Item Number	Name	Quantity used	Delivery time
5	09 20 66 013-42	handle	1.00	60
6	09 14 10 202 90	seal	1.00	2
9	09 31 11 012 90	pin	1.00	2
2	09 18 20 221-42	base	1.00	-
Spare part can no longer be ordered, please order the replacement item				
3	90 90 03 131 01 90	top	1.00	2
4	09 24 04 533-42	nut	1.00	60
8	04 30 04 100 00 90	hose	1.00	2
7	09 27 66 006-42	rosette	1.00	60
10	04 30 11 038 00 90	fixing set	1.00	2
1	90 28 22 312 00-42	spout	1.00	30