

## META Pillar tap cold water - Light Gold

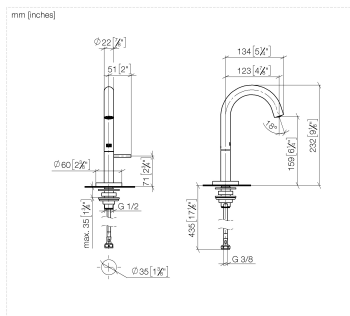
META

17 500 662 Product version from 5/1/2022



- 123mm projection
- fixed spout
- circular, air-enriched flow
- height of mixer 232 mm
- height up to aerator 159 mm
- hole diameter 35 mm
- 1/2" connection
- rosette Ø 60 mm
- max. flow 5.7 l/min
- lead-free
- This product can help a building meet the requirements of Green Building Rating Systems, e.g. LEED®, BREEAM®, DGNB

	Light Gold	17 500 662-26
	Chrome	17 500 662-00
	Brushed Platinum	17 500 662-06
	Dark Chrome	17 500 662-19
	Brushed Light Gold	17 500 662-27
	Matte Black	17 500 662-33
	Brushed Dark Brass	17 500 662-39
	Brushed Bronze	17 500 662-42
	Brushed Champagne (22kt Gold)	17 500 662-46
	Champagne (22kt Gold)	17 500 662-47
	Brushed Chrome	17 500 662-93
	Brushed Dark Platinum	17 500 662-99



## Flow rate chart



## Codes & Standards

DIN 4109

ISO 3822

Ü-Zeichen



## META Pillar tap cold water - Light Gold

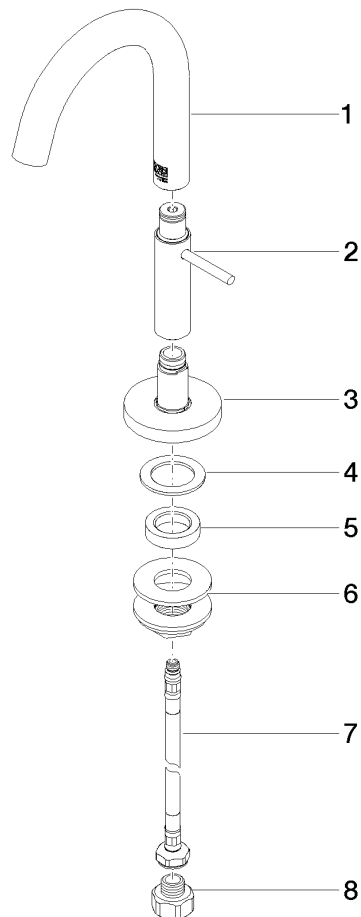
META

17 500 662 Product version from 5/1/2022

Certificates and sustainability

LGA\_38

Parts for other  
finishes can be found  
here: [Chrome](#)



## Spare parts list

No.	Item Number	Name	Quantity used	Delivery time
4	09 14 05 015 90	seal	1.00	2
2	90 20 66 024 10-26	handle	1.00	30
5	09 28 10 079 90	ring	1.00	60
3	90 27 66 020 00-26	rosette	1.00	30
6	04 23 10 017 00 90	fixing set	1.00	60
1	90 28 22 388 00-26	spout	1.00	30
7	04 30 04 102 00 90	High pressure hose 3/8" -	1.00	2
8	90 24 03 267 00-00	adaptor	1.00	10