

# META SQUARE HOT & COLD WATER DISPENSER - Brushed Durabrass (23kt Gold)

META SQUARE

17 871 861 Product version from 3/1/2025



- 145mm projection
- pivotable spout 360°
- laminar flow
- height of mixer 250 mm
- height up to laminar flow regulator 185 mm
- hole diameter 35 mm
- provides filtered, hot water up to 93°C
- Provides filtered water
- max. flow 3.8 l/min at 3 bar flow pressure
- mechanical valve
- lead-free
- lever

• This product can help a building meet the requirements of Green Building Rating Systems, e.g. LEED®, BREEAM®, DGNB

**A minimum flow pressure of 3 bar is necessary for the HOT & COLD WATER DISPENSER to work perfectly in conjunction with a hot water tank and filter.**

**The installation must be above a kitchen sink.**

**The filter cartridge must be changed every six months. The installation instructions contain further information for guidance.**

**Detailed planning information and technical data can be found at**

**[www.dornbracht.com/professional](http://www.dornbracht.com/professional)**

**Not compatible with reverse osmosis filtration**

**Provides constantly boiling water by turning the lever forward – version without scalding protection.**

A minimum flow pressure of 3 bar is necessary for the HOT & COLD WATER DISPENSER to work perfectly in conjunction with a hot water tank and filter.

The installation must be above a kitchen sink.

The filter cartridge must be changed every six months. The installation instructions contain further information for guidance.

Detailed planning information and technical data can be found at [www.dornbracht.com/professional](http://www.dornbracht.com/professional)

Not compatible with reverse osmosis filtration

Provides constantly boiling water by turning the lever forward – version without scalding protection.

|  |                               |               |
|--|-------------------------------|---------------|
|  | Brushed Durabrass (23kt Gold) | 17 871 861-28 |
|  | Chrome                        | 17 871 861-00 |
|  | Brushed Platinum              | 17 871 861-06 |
|  | Platinum                      | 17 871 861-08 |
|  | Dark Chrome                   | 17 871 861-19 |
|  | Matte Black                   | 17 871 861-33 |
|  | Brushed Bronze                | 17 871 861-42 |
|  | Brushed Champagne (22kt Gold) | 17 871 861-46 |
|  | Champagne (22kt Gold)         | 17 871 861-47 |
|  | Brushed Chrome                | 17 871 861-93 |
|  | Brushed Dark Platinum         | 17 871 861-99 |

## Required miscellaneous

Hose set

12 530 970 90



## Required miscellaneous

Hot water tank incl. filter -

12 892 970 90

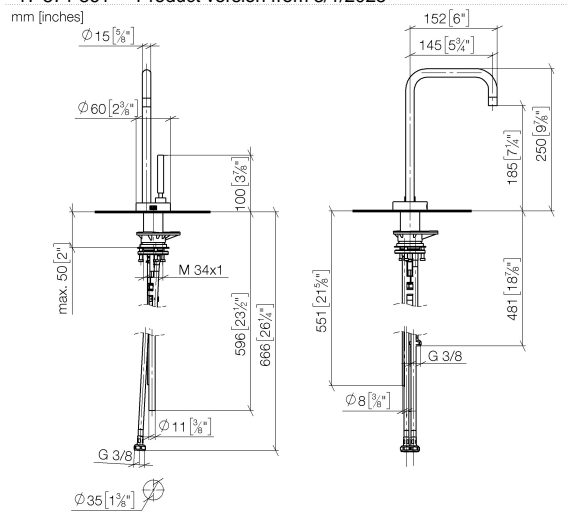


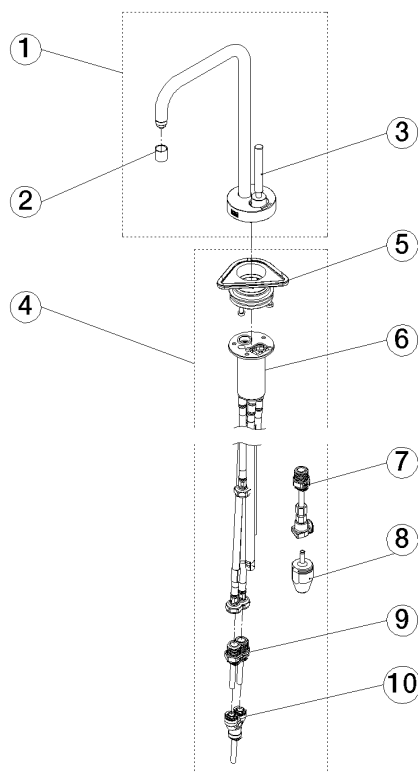
META SQUARE HOT & COLD WATER DISPENSER - Brushed Durabrass  
(23kt Gold)

## META SQUARE

17 871 861 Product version from 3/1/2025

mm [inches]





## Spare parts list

| No. | Item Number           | Name       | Quantity used | Delivery time |
|-----|-----------------------|------------|---------------|---------------|
|     | 7 90 24 04 293 00 90  | adaptor    | 1.00          | 2             |
|     | 5 90 30 10 057 00 90  | fixing set | 1.00          | 2             |
|     | 8 90 24 04 291 00 90  | insert     | 1.00          | 2             |
|     | 2 90 18 40 163 01-28  | aerator    | 1.00          | 30            |
|     | 4 90 17 87 179 01 90  | set        | 1.00          | 2             |
|     | 6 90 30 01 220 00 90  | hose       | 1.00          | 2             |
|     | 9 90 24 04 293 01 90  | hose       | 1.00          | 2             |
|     | 3 90 20 87 022 01-28  | handle     | 1.00          | 20            |
|     | 1 90 17 87 286 10-28  | spout      | 1.00          | 20            |
|     | 10 90 24 04 364 00 90 | adaptor    | 1.00          | 2             |