

VAIA COLD WATER DISPENSER - Brushed Champagne (22kt Gold)

VAIA

17 872 809 Product version from 3/1/2025



- 150mm projection
- pivotable spout 360°
- laminar flow
- height of mixer 290 mm
- height up to laminar flow regulator 208 mm
- hole diameter 35 mm
- Provides filtered water
- max. flow 3.8 l/min at 3 bar flow pressure
- mechanical valve
- lead-free
- This product can help a building meet the requirements of Green Building Rating Systems, e.g. LEED®, BREEAM®, DGNB

The filter cartridge must be changed every six months. The installation instructions contain further information for guidance.

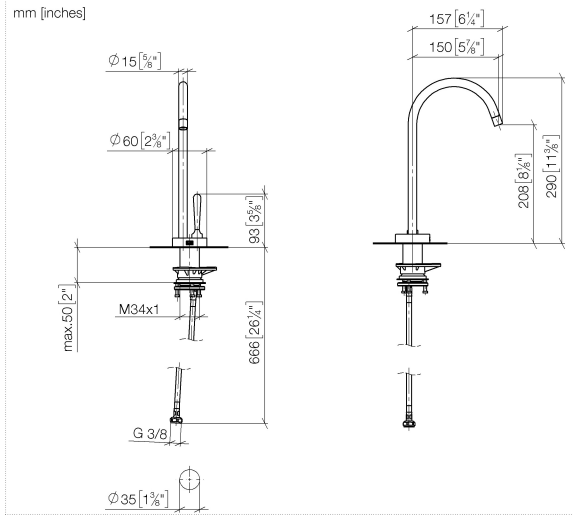
Detailed planning information and technical data can be found at www.dornbracht.com/professional

NOTE: Not compatible with reverse osmosis

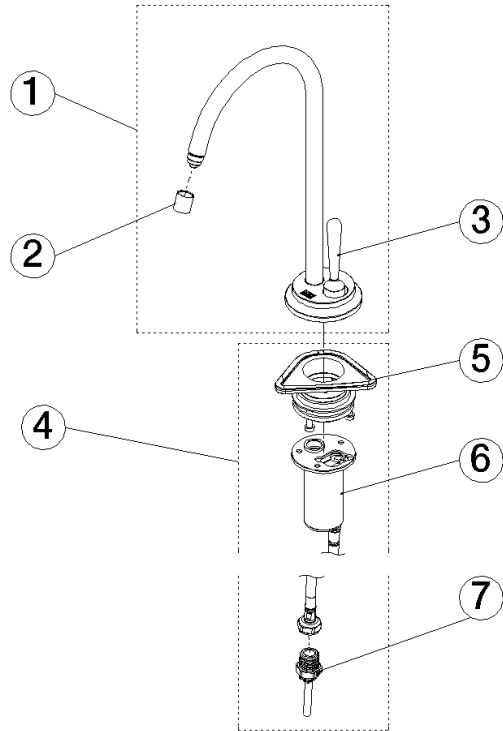
Not compatible with reverse osmosis filtration

Provides constantly boiling water by turning the lever forward – version without scalding protection.

	Brushed Champagne (22kt Gold)	17 872 809-46
	Chrome	17 872 809-00
	Brushed Platinum	17 872 809-06
	Platinum	17 872 809-08
	Durabrand (23kt Gold)	17 872 809-09
	Dark Chrome	17 872 809-19
	Brushed Durabrand (23kt Gold)	17 872 809-28
	Matte Black	17 872 809-33
	Brushed Bronze	17 872 809-42
	Champagne (22kt Gold)	17 872 809-47
	Brushed Chrome	17 872 809-93
	Brushed Dark Platinum	17 872 809-99



Parts for other finishes can be found here: [Chrome](#)



Spare parts list

No.	Item Number	Name	Quantity used	Delivery time
1	90 17 87 280 90-46	spout	1.00	30
2	90 17 87 287 51 90	set	1.00	2