

TARA ULTRA COLD WATER DISPENSER - Brushed Bronze

TARA ULTRA

17 872 875 Product version from 3/1/2025



- 146mm projection
- pivotable spout 360°
- laminar flow
- height of mixer 290 mm
- height up to laminar flow regulator 182 mm
- hole diameter 35 mm
- Provides filtered water
- max. flow 3.8 l/min at 3 bar flow pressure
- mechanical valve
- lead-free
- This product can help a building meet the requirements of Green Building Rating Systems, e.g. LEED®, BREEAM®, DGNB

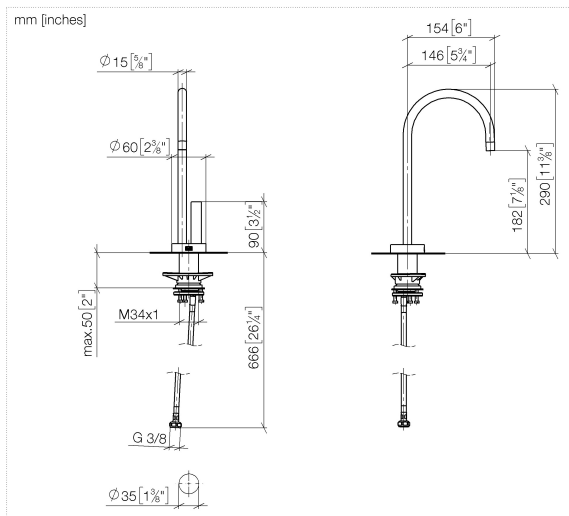
The filter cartridge must be changed every six months. The installation instructions contain further information for guidance.

Detailed planning information and technical data can be found at www.dornbracht.com/professional

NOTE: Not compatible with reverse osmosis

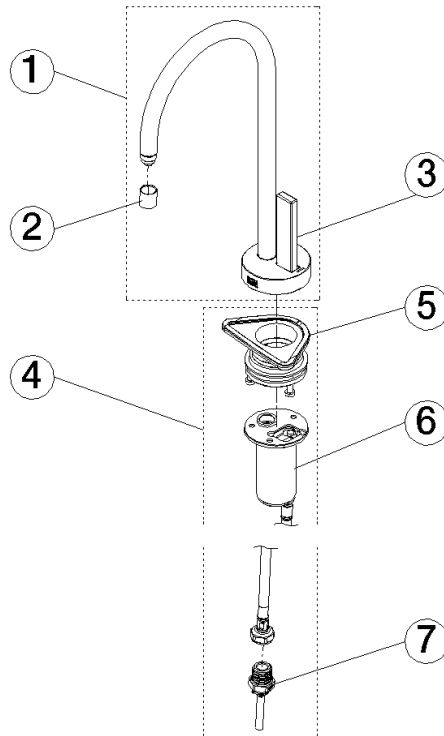
Not compatible with reverse osmosis filtration

	Brushed Bronze	17 872 875-42
	Chrome	17 872 875-00
	Brushed Platinum	17 872 875-06
	Platinum	17 872 875-08
	Durabronze (23kt Gold)	17 872 875-09
	Dark Chrome	17 872 875-19
	Brushed Durabronze (23kt Gold)	17 872 875-28
	Matte Black	17 872 875-33
	Brushed Champagne (22kt Gold)	17 872 875-46
	Champagne (22kt Gold)	17 872 875-47
	Brushed Chrome	17 872 875-93
	Brushed Dark Platinum	17 872 875-99



17 872 875 Product version from 3/1/2025

Parts for other
finishes can be found
here: [Chrome](#)



Spare parts list

No.	Item Number	Name	Quantity used	Delivery time
1	90 17 87 287 50-42	spout	1.00	30
7	90 24 04 293 02 90	adaptor	1.00	2
3	90 20 87 028 01-42	handle	1.00	30
4	90 17 87 287 51 90	set	1.00	2
6	90 30 01 221 00 90	hose	1.00	2
5	90 30 10 057 00 90	fixing set	1.00	2
2	90 18 40 163 01-42	aerator	1.00	40