

## TARA Three-hole basin mixer with pop-up waste - Brushed Chrome

TARA

20 705 882

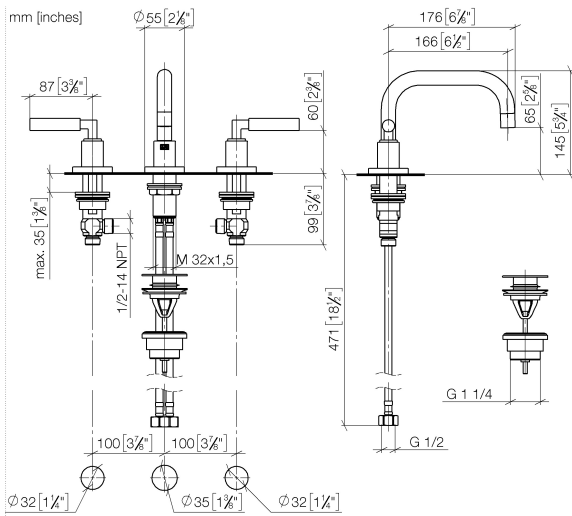


- 166mm projection
- pivotable spout 360°
- circular, air-enriched flow
- height of mixer 145 mm
- height up to aerator 65 mm
- hole diameter valve 32 mm
- hole diameter spout 35 mm
- rosette Ø 55 mm
- 2x screw-in M 10 x 1 pressure hose, leak-tested
- max. flow 5.7 l/min
- lead-free
- This product can help a building meet the requirements of Green Building Rating Systems, e.g. LEED®, BREEAM®, DGNB
- WRAS 2303029

Only suitable for basins with an overflow.

|  |                                |               |
|--|--------------------------------|---------------|
|    | Brushed Chrome                 | 20 705 882-93 |
|    | Chrome                         | 20 705 882-00 |
|    | Brushed Platinum               | 20 705 882-06 |
|    | Platinum                       | 20 705 882-08 |
|    | Dark Chrome                    | 20 705 882-19 |
|    | Brushed Durabronze (23kt Gold) | 20 705 882-28 |
|    | Matte Black                    | 20 705 882-33 |
|    | Brushed Bronze                 | 20 705 882-42 |
|    | Brushed Champagne (22kt Gold)  | 20 705 882-46 |
|   | Champagne (22kt Gold)          | 20 705 882-47 |
|  | Brushed Dark Platinum          | 20 705 882-99 |

20 705 882



Flow rate chart



Codes & Standards

DIN 4109

Executive Order  
no. 1007

ISO 3822

Scottish Water  
Byelaws

UK Water Supply  
Regulations

Ü-Zeichen



## TARA Three-hole basin mixer with pop-up waste - Brushed Chrome

---

TARA

20 705 882

### Certificates

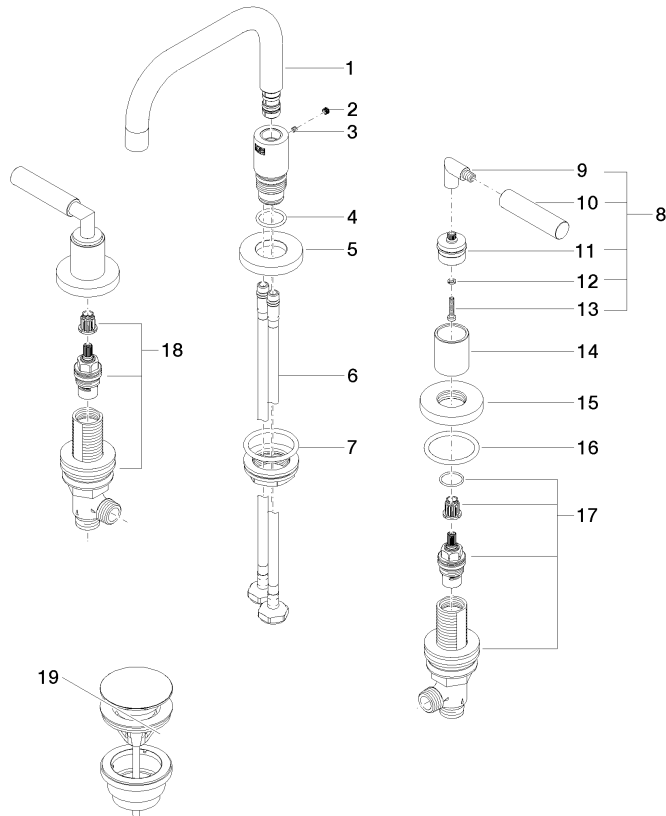
---

WRAS\_2303

LGA\_38

GDV\_0400

**Product version from 4/1/2024**





## TARA Three-hole basin mixer with pop-up waste - Brushed Chrome

TARA

20 705 882

### Spare parts list

#### Product version from 4/1/2024

| No. | Item Number        | Name  | Quantity used | Delivery time |
|-----|--------------------|-------|---------------|---------------|
|     | 90 28 22 370 00-93 | spout | 29            | 20            |