

META Three-hole basin mixer with pop-up waste - Light Gold

20 713 661 Product version from 7/1/2023



- 168mm projection
- pivotable spout 360°
- circular, air-enriched flow
- height of mixer 280 mm
- height up to aerator 191 mm
- hole diameter valve 32 mm
- hole diameter spout 35 mm
- rosette Ø 60 mm
- 2x screw-in M 8 x 1 pressure hose, leak-tested
- max. flow 5.7 l/min
- lead-free
- This product can help a building meet the requirements of Green Building Rating Systems, e.g. LEED®, BREEAM®, DGNB
- WRAS

Only suitable for basins with an overflow.

| | | |
|---|-------------------------------|---------------|
|  | Light Gold | 20 713 661-26 |
|  | Chrome | 20 713 661-00 |
|  | Brushed Platinum | 20 713 661-06 |
|  | Dark Chrome | 20 713 661-19 |
|  | Brushed Light Gold | 20 713 661-27 |
|  | Matte Black | 20 713 661-33 |
|  | Brushed Bronze | 20 713 661-42 |
|  | Brushed Champagne (22kt Gold) | 20 713 661-46 |
|  | Champagne (22kt Gold) | 20 713 661-47 |
|  | Brushed Chrome | 20 713 661-93 |
|  | Brushed Dark Platinum | 20 713 661-99 |

Recommended miscellaneous

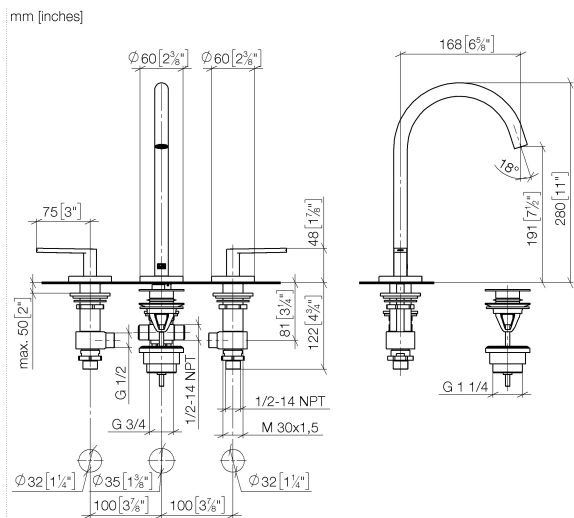


High pressure hoses -
• 2x 3/8" x 1/2" x 500mm high pressure hose

12 506 970 90

META Three-hole basin mixer with pop-up waste - Light Gold

20 713 661 Product version from 7/1/2023



Flow rate chart



Codes & Standards

DIN 4109

ISO 3822

Ü-Zeichen



META Three-hole basin mixer with pop-up waste - Light Gold

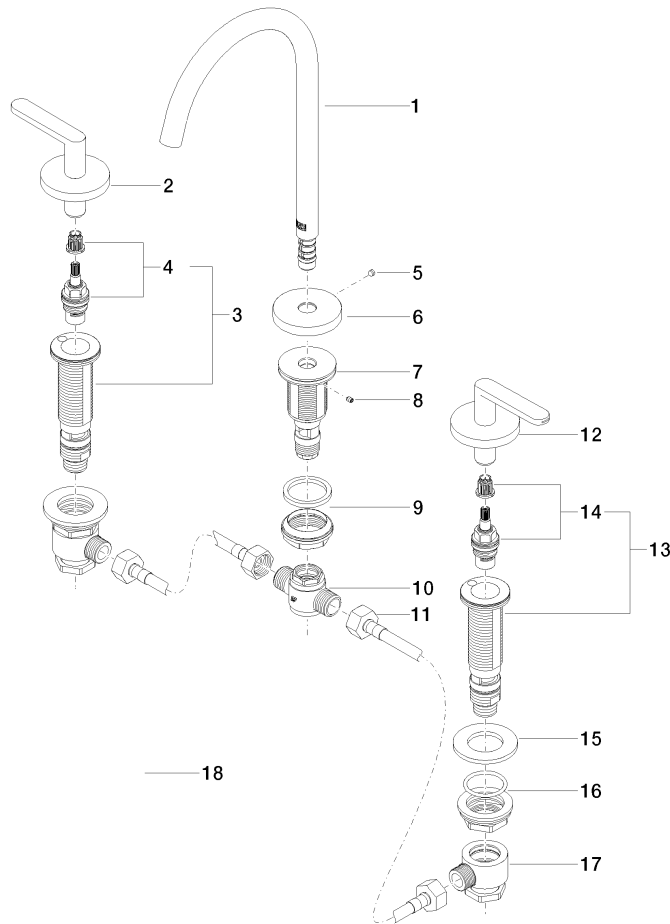
20 713 661 Product version from 7/1/2023

Certificates

LGA_29

META Three-hole basin mixer with pop-up waste - Light Gold

20 713 661 Product version from 7/1/2023



Spare parts list

| No. | Item Number | Name | Quantity used | Delivery time |
|-----|--------------------|---|---------------|---------------|
| 1 | 90 28 22 325 00-26 | spout | 1 | 30 |
| 2 | 90 20 66 016 00-26 | handle (hot) | 1 | 30 |
| 3 | 04 17 11 058 32 90 | side panel | 1 | 2 |
| 4 | 90 90 03 133 00 90 | top | 1 | 2 |
| 5 | 09 31 11 112 90 | pin | 1 | 60 |
| 6 | 09 27 66 002-26 | rosette | 1 | 60 |
| 7 | 09 30 01 287 90 | connection | 1 | 60 |
| 8 | 09 31 11 044 90 | pin | 1 | 2 |
| 9 | 04 23 10 044 07 90 | fixing set | 1 | 2 |
| 10 | 90 17 11 020 10 90 | distributor | 1 | 2 |
| 11 | 04 30 04 096 00 90 | hose | 2 | 2 |
| 12 | 90 20 66 015 00-26 | handle (cold) | 1 | 30 |
| 13 | 04 17 11 058 33 90 | side panel | 1 | 2 |
| 14 | 90 90 03 132 00 90 | top | 1 | 2 |
| 15 | 09 30 11 099 90 | disc | 2 | 2 |
| 16 | 04 23 10 032 78 90 | fixing set | 2 | 2 |
| 17 | 04 17 11 023 10 90 | distributor | 2 | 2 |
| 18 | 10 125 970-26 | Basin Waste with push fastening 1 1/4" - Light Gold | 1 | 30 |