

VAIA Single-hole basin mixer with pop-up waste - Brushed Champagne (22kt Gold)

VAIA

22 513 809



- 167mm projection
- pivotable spout 360°
- circular, air-enriched flow
- height of mixer 307 mm
- height up to aerator 221 mm
- hole diameter 35 mm
- rosette Ø 60 mm
- 2x screw-in M 10 x 1 pressure hose, leak-tested
- max. flow 5.7 l/min
- lead-free
- This product can help a building meet the requirements of Green Building Rating Systems, e.g. LEED®, BREEAM®, DGNB
- WRAS 240102002

Only suitable for basins with an overflow.

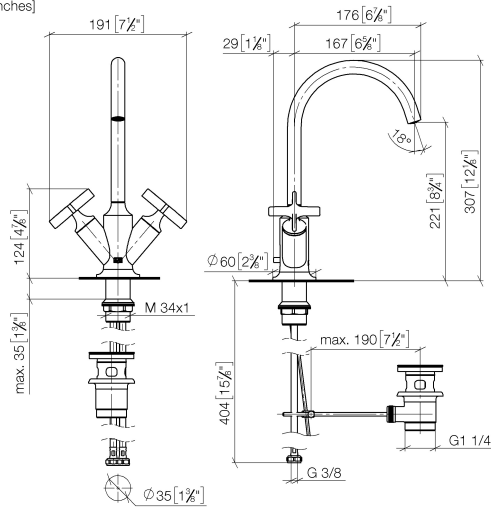
| | | |
|--|--------------------------------|---------------|
|  | Brushed Champagne (22kt Gold) | 22 513 809-46 |
|  | Chrome | 22 513 809-00 |
|  | Brushed Platinum | 22 513 809-06 |
|  | Platinum | 22 513 809-08 |
|  | Dark Chrome | 22 513 809-19 |
|  | Brushed Durabronze (23kt Gold) | 22 513 809-28 |
|  | Brushed Bronze | 22 513 809-42 |
|  | Champagne (22kt Gold) | 22 513 809-47 |
|  | Brushed Dark Platinum | 22 513 809-99 |

VAIA Single-hole basin mixer with pop-up waste - Brushed Champagne (22kt Gold)

VAIA

22 513 809

mm [inches]



Flow rate chart



Codes & Standards

DIN 4109

ISO 3822

Scottish Water
Byelaws

UK Water Supply
Regulations

Ü-Zeichen



VAIA Single-hole basin mixer with pop-up waste - Brushed Champagne (22kt Gold)

VAIA

22 513 809

Certificates

LGA_18

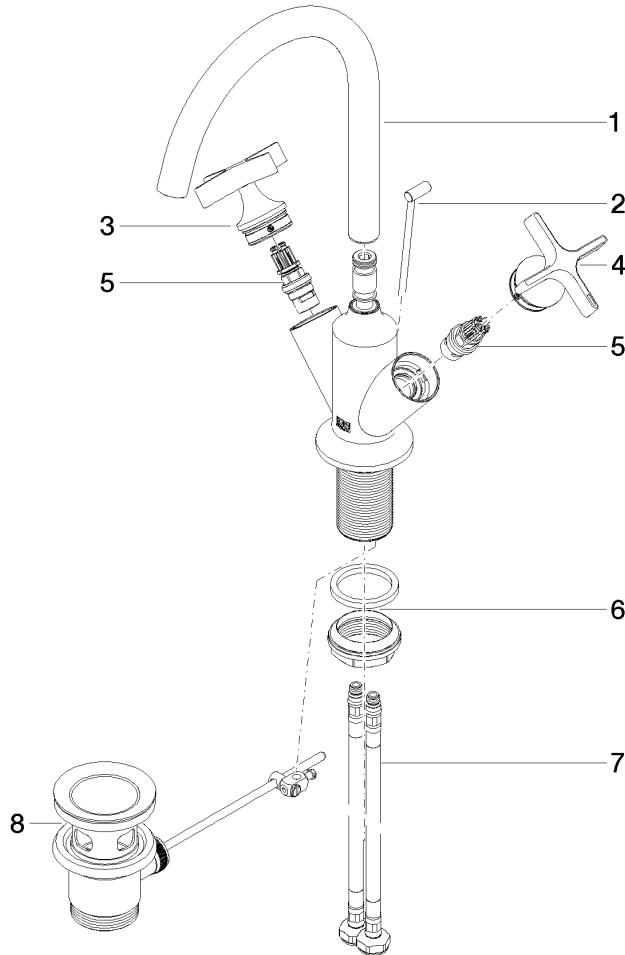
WRAS_240102

VAIA Single-hole basin mixer with pop-up waste - Brushed Champagne (22kt Gold)

VAIA

22 513 809

Parts for other
finishes can be found
here: [Chrome](#)





VAIA Single-hole basin mixer with pop-up waste - Brushed Champagne (22kt Gold)

VAIA

22 513 809

Spare parts list

| No. | Item Number | Name | Quantity used | Delivery time |
|-----|--------------------|-------|---------------|---------------|
| | 90 28 22 320 00-46 | spout | 10 | 30 |