







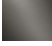
IMO Single-hole basin mixer with stand pipe without pop-up waste - Matte Black

IMO


22 585 671
Product version from 4/1/2024




- 195mm projection
- fixed spout
- rectangular, air-enriched flow
- total height 1038 - 1103 mm
- height up to aerator 970 – 1040 mm
- rosette Ø 135 mm
- max. flow 4.6 l/min
- lead-free
- This product can help a building meet the requirements of Green Building Rating Systems, e.g. LEED®, BREEAM®, DGNB

	Matte Black	22 585 671-33
	Chrome	22 585 671-00
	Brushed Platinum	22 585 671-06
	Dark Chrome	22 585 671-19
	Brushed Light Gold	22 585 671-27
	Brushed Chrome	22 585 671-93
	Brushed Dark Platinum	22 585 671-99

Required miscellaneous

	Concealed floor mounting - •min. recess depth 80 mm •max. recess depth 150 mm	35 945 970 90
---	--	---------------

Required miscellaneous

	Concealed floor mounting - •min. recess depth 80 mm •max. recess depth 150 mm	35 945 970 90
---	--	---------------

mm [inches]



Flow rate chart



Codes & Standards

DIN 4109

ISO 3822

Scottish Water
Byelaws

UK Water Supply
Regulations

Ü-Zeichen



IMO Single-hole basin mixer with stand pipe without pop-up waste - Matte Black

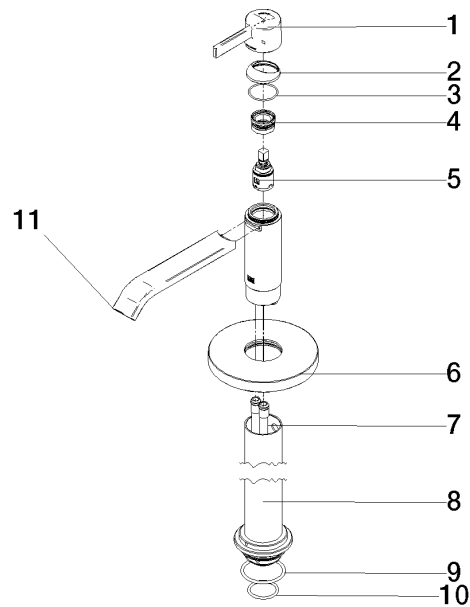
IMO

22 585 671 Product version from 4/1/2024

Certificates and sustainability

LGA_38

WRAS_250102



Spare parts list

No.	Item Number	Name	Quantity used	Delivery time
4	90 23 10 146 00 90	nut	1.00	2
5	90 15 05 042 00 90	cartridge	1.00	2
1	90 20 67 019 00-33	handle	1.00	30
2	90 28 30 059 00-33	cover	1.00	-
Spare part can no longer be ordered, please order the replacement item				
3	09 14 10 102 90	seal	1.00	2
10	09 14 10 018 90	seal	1.00	2
6	09 27 88 005-33	rosette	1.00	30
11	90 28 22 407 00-33	spout	1.00	30
8	90 28 22 574 00-33	pipe	1.00	30
7	04 28 22 022 10 90	connection	2.00	2
9	09 14 10 084 90	seal	1.00	2