

## Angle valve - Chrome

## SERIES SPECIFIC

22 901 782 Product version from 3/10/2014 to 5/27/2021



- rosette 60 x 60 mm
- hose covering 200mm, for shortening
- 1/2" connection
- WRAS

	Chrome	22 901 782-00
	Brushed Platinum	22 901 782-06
	Platinum	22 901 782-08
	Dark Chrome	22 901 782-19
	Brushed Durabronze (23kt Gold)	22 901 782-28
	Matte Black	22 901 782-33
	Brushed Champagne (22kt Gold)	22 901 782-46
	Champagne (22kt Gold)	22 901 782-47
	Brushed Chrome	22 901 782-93
	Brushed Dark Platinum	22 901 782-99

## Angle valve - Chrome

SERIES SPECIFIC

22 901 782 Product version from 3/10/2014 to 5/27/2021

mm [inches]



### Flow rate chart



### Codes & Standards

Scottish Water  
Byelaws

UK Water Supply  
Regulations



## Angle valve - Chrome

SERIES SPECIFIC

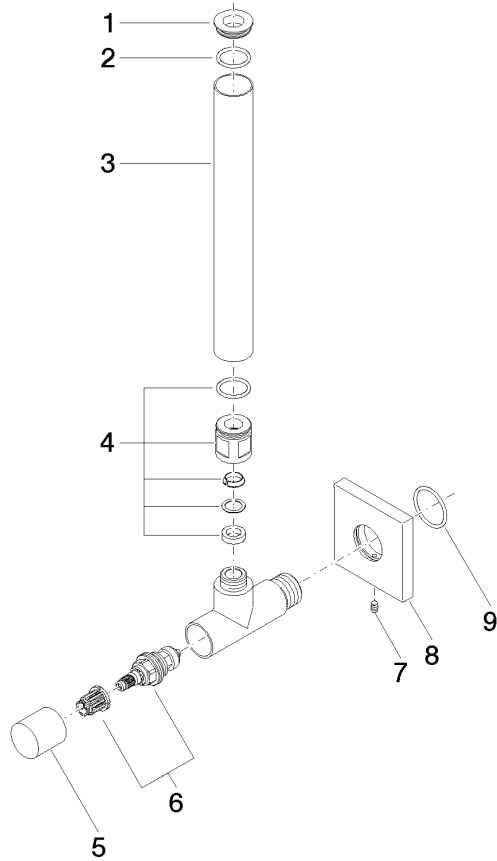
22 901 782 Product version from 3/10/2014 to 5/27/2021

Certificates and sustainability

WRAS\_2205

22 901 782 Product version from 3/10/2014 to 5/27/2021

Parts for other  
finishes can be found  
here: Brushed  
Platinum



### Spare parts list

No.	Item Number	Name	Quantity used	Delivery time
4	04 24 04 220 01-00	threaded connector	1.00	10
1	09 21 22 000-00	nipple	1.00	10
5	09 20 22 001-00	handle	1.00	10
9	09 14 10 112 90	seal	1.00	2
7	09 31 11 048 90	pin	1.00	2
8	09 27 78 042-00	rosette	1.00	10
6	90 90 03 006 00 90	top	1.00	2
3	09 28 22 020-00	pipe	1.00	10
2	90 14 10 010 00 90	seal	1.00	2