

**VAIA Single-lever bath mixer with stand pipe for free-standing assembly with hand shower set - Brushed Bronze**

25 863 809



- spout: circular, air-enriched flow
- max. flow 24.6 l/min at 3 bar flow pressure
- Hand shower: COMPACT RAIN, max. flow rate 6.8 l/min (at 3 bar)
- bar-type hand shower with anti-scale system
- 281mm projection
- pivotable spout 360°
- automatic bath/shower diverter
- total height 1057 - 1127 mm
- wall bracket
- stand pipe height 565 - 635 mm
- height up to aerator 925 – 995 mm
- slide-on rosettes Ø 135 mm
- metal shower hose 1250mm with integrated anti-twist protection
- WRAS

**Intrinsic protection against back flow.**

Intrinsic protection against back flow.

|                                                                                   |                                |               |
|-----------------------------------------------------------------------------------|--------------------------------|---------------|
|  | Brushed Bronze                 | 25 863 809-42 |
|  | Chrome                         | 25 863 809-00 |
|  | Brushed Platinum               | 25 863 809-06 |
|  | Platinum                       | 25 863 809-08 |
|  | Dark Chrome                    | 25 863 809-19 |
|  | Brushed Durabronze (23kt Gold) | 25 863 809-28 |
|  | Brushed Champagne (22kt Gold)  | 25 863 809-46 |
|  | Champagne (22kt Gold)          | 25 863 809-47 |
|  | Brushed Dark Platinum          | 25 863 809-99 |

**Required miscellaneous**

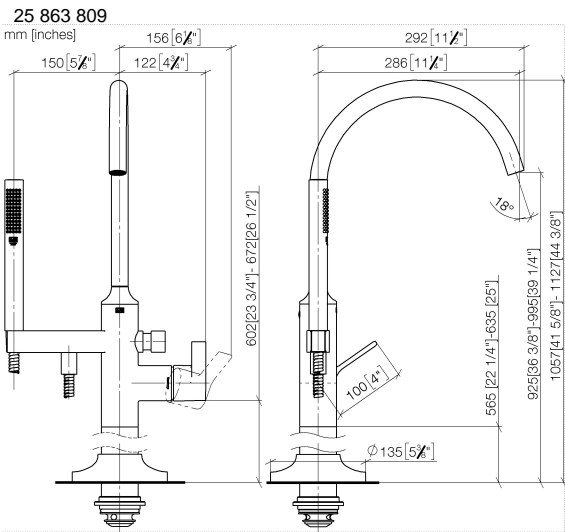


**Concealed floor mounting -**

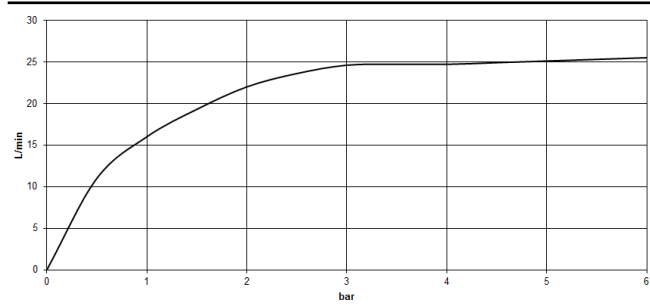
35 945 970 90

- min. recess depth mm
- max. recess depth mm

**VAIA Single-lever bath mixer with stand pipe for free-standing assembly with hand shower set - Brushed Bronze**



**Flow rate chart**



**Codes & Standards**

ASME A112.18.1      cUPC      EN 1717



## VAIA Single-lever bath mixer with stand pipe for free-standing assembly with hand shower set - Brushed Bronze

---

25 863 809

Certificates

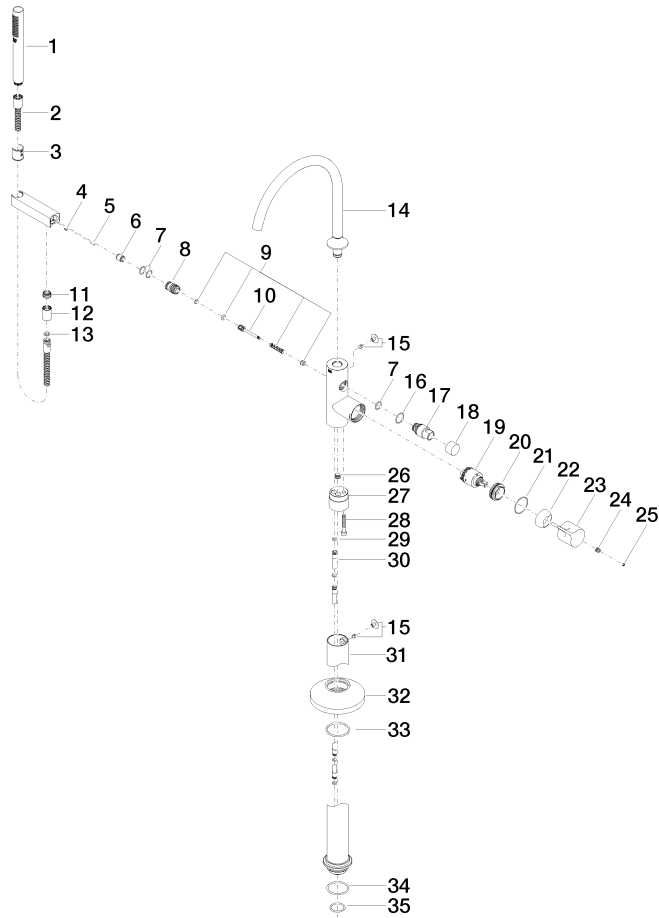
---

IAPMO\_4976

Belgaqua\_24-003-2

## VAIA Single-lever bath mixer with stand pipe for free-standing assembly with hand shower set - Brushed Bronze

25 863 809





## VAIA Single-lever bath mixer with stand pipe for free-standing assembly with hand shower set - Brushed Bronze

25 863 809

### Spare parts list

| No.                                                                    | Item Number        | Name                | Quantity used | Delivery time |
|------------------------------------------------------------------------|--------------------|---------------------|---------------|---------------|
| 1                                                                      | 90 12 11 140 41-42 | shower              | 1             | 30            |
| 2                                                                      | 90 30 02 072 00-42 | hose                | 1             | 30            |
| 3                                                                      | 09 18 40 118 90    | sleeve              | 1             | 2             |
| 4                                                                      | 09 31 11 058 90    | pin                 | 1             | 2             |
| 5                                                                      | 09 31 11 040 90    | pin                 | 1             | 2             |
| 6                                                                      | 90 23 01 141 00 90 | back-flow preventer | 1             | 2             |
| 7                                                                      | 90 14 10 010 00 90 | seal                | 3             | 2             |
| 8                                                                      | 09 24 03 153 20-42 | nipple              | 1             | -             |
| Spare part can no longer be ordered, please order the replacement item |                    |                     |               |               |
| 9                                                                      | 90 16 02 023 00 90 | spring              | 1             | 2             |
| 10                                                                     | 09 31 09 102 20-42 | pull-rod            | 1             | -             |
| Spare part can no longer be ordered, please order the replacement item |                    |                     |               |               |
| 11                                                                     | 09 24 03 069 90    | nipple              | 1             | 2             |
| 12                                                                     | 90 21 02 069 00-42 | cover               | 1             | 30            |
| 13                                                                     | 90 14 20 026 00 90 | seal                | 1             | 2             |
| 14                                                                     | 90 28 22 327 00-42 | spout               | 1             | 30            |
| 15                                                                     | 04 31 20 036 00 90 | plug                | 2             | 2             |
| 16                                                                     | 09 14 10 112 90    | seal                | 1             | 2             |
| 17                                                                     | 09 21 34 081 20-42 | nipple              | 1             | 60            |
| 18                                                                     | 09 20 88 002-42    | handle              | 1             | 60            |
| 19                                                                     | 90 15 05 039 00 90 | cartridge           | 1             | 2             |
| 20                                                                     | 09 24 04 298 90    | nut                 | 1             | 2             |
| 21                                                                     | 09 14 10 037 90    | seal                | 1             | 2             |
| 22                                                                     | 09 28 30 036-42    | cover               | 1             | 60            |
| 23                                                                     | 09 20 80 022-42    | handle              | 1             | 60            |
| 24                                                                     | 90 31 11 030 00 90 | pin                 | 1             | 2             |
| 25                                                                     | 90 31 20 087 00-42 | plug                | 1             | 30            |
| 26                                                                     | 04 31 20 039 11 90 | plug                | 1             | 2             |
| 27                                                                     | 09 24 03 152 20-42 | adaptor             | 1             | -             |
| Spare part can no longer be ordered, please order the replacement item |                    |                     |               |               |
| 28                                                                     | 09 30 30 111 90    | screw               | 1             | 2             |
| 29                                                                     | 09 14 10 139 90    | seal                | 2             | 2             |
| 30                                                                     | 04 28 22 025 00 90 | connection          | 2             | 2             |
| 31                                                                     | 04 28 22 030 00-42 | pipe                | 1             | 60            |
| 32                                                                     | 09 27 80 022-42    | rosette             | 1             | 60            |
| 33                                                                     | 90 14 10 129 00 90 | seal                | 1             | 2             |
| 34                                                                     | 09 14 10 084 90    | seal                | 1             | 2             |
| 35                                                                     | 09 14 10 018 90    | seal                | 1             | 2             |