


MADISON Two-hole bath mixer for free-standing assembly with hand shower set - Chrome

MADISON








25 943 360

Product version from 7/1/2025



- 245mm projection
- spout: rectangular normal flow
- Hand shower: COMPACT RAIN, max. flow rate 6.8 l/min (at 3 bar)
- hand shower with anti-scale system
- rotary diverter for bath/shower
- wall bracket
- total height 901 mm
- stand pipes height 730 mm
- height up to aerator 610 mm
- slide-on rosettes Ø 90 mm
- gauge 153 mm
- metal shower hose 1250mm with integrated anti-twist protection
- max. flow 51 l/min at 3 bar flow pressure
- WRAS
- **Intrinsic protection against back flow.**

Intrinsic protection against back flow.

	Chrome	25 943 360-00
	Brushed Platinum	25 943 360-06
	Platinum	25 943 360-08
	Durabrand (23kt Gold)	25 943 360-09
	Brushed Durabrand (23kt Gold)	25 943 360-28
	Brushed Dark Brass	25 943 360-39
	Brushed Dark Platinum	25 943 360-99

Required miscellaneous



Concealed floor mounting -

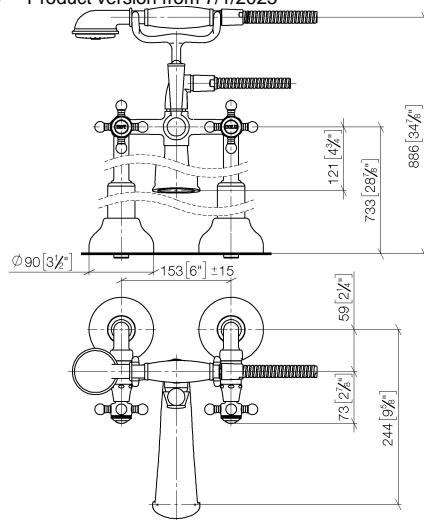
35 944 970 90

- max. recess depth 160 mm
- min. recess depth 80 mm

MADISON Two-hole bath mixer for free-standing assembly with hand shower set - Chrome

MADISON

25 943 360 Product version from 7/1/2025
mm [inches]



Flow rate chart



Codes & Standards

ASME A112.18.1	cUPC	EN 1717	Scottish Water Byelaws
----------------	------	---------	------------------------

UK Water Supply Regulations



MADISON Two-hole bath mixer for free-standing assembly with hand shower set - Chrome

MADISON

25 943 360 Product version from 7/1/2025

Certificates and sustainability

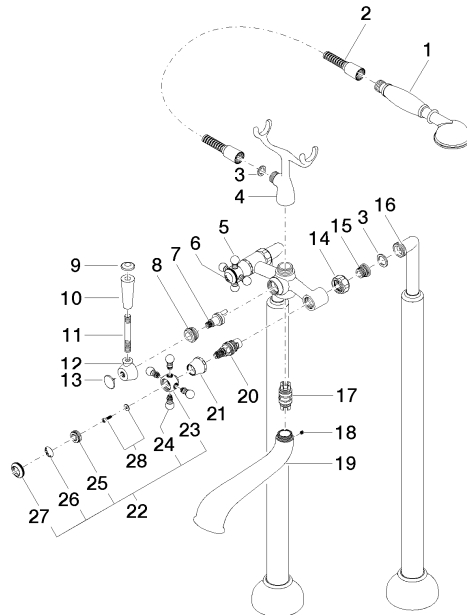
IAPMO_4976

Belgaqua_21-378-2 WRAS_250502

MADISON Two-hole bath mixer for free-standing assembly with hand shower set - Chrome

MADISON

25 943 360 Product version from 7/1/2025





MADISON Two-hole bath mixer for free-standing assembly with hand shower set - Chrome

MADISON

25 943 360 Product version from 7/1/2025

Spare parts list

No.	Item Number	Name	Quantity used	Delivery time
12	09 18 20 011-00	base	1.00	10
6	09 26 01 011 90	accessories	1.00	2
9	09 30 30 062-00	screw	1.00	10
26	09 26 01 010 90	accessories	1.00	2
24	09 20 36 004-00	handle	8.00	10
2	28 104 970-00	Metal shower hose 1/2" x 1/2" x 1250 mm - Chrome	1.00	2
21	09 21 02 055-00	cover	2.00	10
15	04 29 05 014 00 90	nipple	2.00	2
16	12 943 360-00	connection	1.00	10
19	13 592 380-00	spout	1.00	60
4	04 17 20 010 00-00	holder	1.00	10
27	09 20 36 005-00	handle	2.00	10
11	09 28 22 013 90	pipe	1.00	2
28	04 30 30 029 00 90	fixing set	2.00	2
5	04 20 36 002 07-00	handle (hot)	1.00	10
13	09 30 30 064-00	screw	1.00	10
1	28 002 970-00	MADISON Metal hand shower with porcelain insert (white) - Chrome	1.00	10
23	09 20 36 002-00	handle	2.00	10
8	09 23 10 007 90	nut	1.00	2
25	09 20 83 006 90	handle	2.00	2
22	04 20 36 002 06-00	handle (cold)	1.00	10
14	09 23 30 010-00	nut	2.00	10
10	11 170 370-00	MADISON Lever insert - Chrome	1.00	10
20	90 90 03 131 00 90	top	2.00	2
7	90 15 01 001 00 90	diverter	1.00	2
3	90 14 20 002 00 90	seal	1.00	2
17	90 21 10 010 00 90	insert	1.00	2
18	90 31 11 030 00 90	pin	1.00	2