

## VAIA Two-hole bath mixer for free-standing assembly with hand shower set - Brushed Dark Platinum

25 943 819 Product version from 5/27/2021



- spout: circular, air-enriched flow
  - max. flow 24.6 l/min at 3 bar flow pressure
  - Hand shower: COMPACT RAIN, max. flow rate 6.8 l/min (at 3 bar)
  - hand shower with anti-scale system
  - 221mm projection
  - pivotable spout 360°
  - rotary diverter for bath/shower
  - total height 920 mm
  - stand pipes height 628 mm
  - height up to aerator 816 mm
  - slide-on rosettes Ø 100 mm
  - gauge 150 mm
  - metal shower hose 1250mm with integrated anti-twist protection
  - pivotable shower holder on the right foot
  - WRAS
- Intrinsic protection against back flow.**

Intrinsic protection against back flow.

|  |                                |               |
|--|--------------------------------|---------------|
|   | Brushed Dark Platinum          | 25 943 819-99 |
|   | Chrome                         | 25 943 819-00 |
|   | Brushed Platinum               | 25 943 819-06 |
|   | Platinum                       | 25 943 819-08 |
|   | Dark Chrome                    | 25 943 819-19 |
|   | Brushed Durabronze (23kt Gold) | 25 943 819-28 |
|   | Brushed Bronze                 | 25 943 819-42 |
|   | Brushed Champagne (22kt Gold)  | 25 943 819-46 |
|  | Champagne (22kt Gold)          | 25 943 819-47 |

### Required miscellaneous



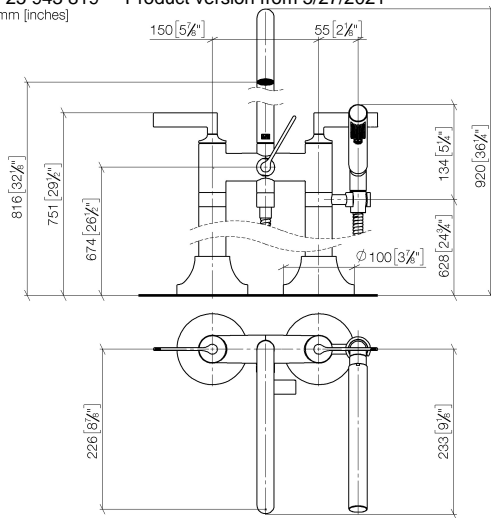
#### Concealed floor mounting -

35 944 970 90

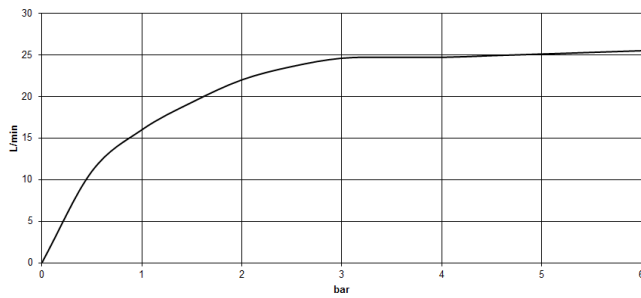
- max. recess depth mm
- min. recess depth mm

## VAIA Two-hole bath mixer for free-standing assembly with hand shower set - Brushed Dark Platinum

25 943 819 Product version from 5/27/2021  
mm [inches]



Flow rate chart



### Codes & Standards

|                |                           |                                |           |
|----------------|---------------------------|--------------------------------|-----------|
| ASME A112.18.1 | cUPC                      | DIN 4109                       | EN 1717   |
| ISO 3822       | Scottish Water<br>Byelaws | UK Water Supply<br>Regulations | Ü-Zeichen |



## VAIA Two-hole bath mixer for free-standing assembly with hand shower set - Brushed Dark Platinum

---

25 943 819 Product version from 5/27/2021

### Certificates

---

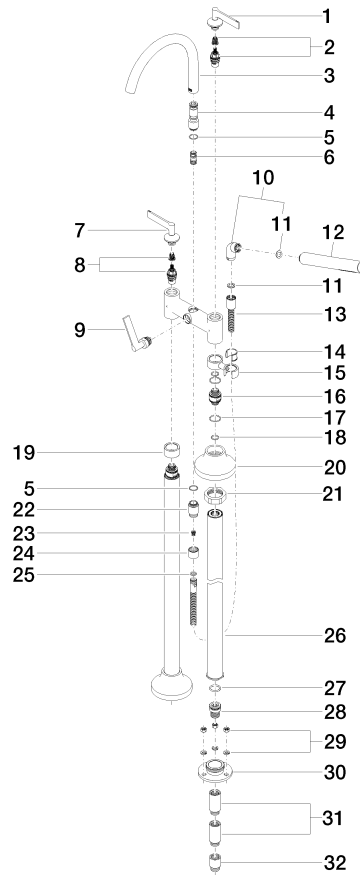
IAPMO\_4976

Belgauqa\_22\_276\_2 LGA\_29

WRAS\_240502

## VAIA Two-hole bath mixer for free-standing assembly with hand shower set - Brushed Dark Platinum

25 943 819 Product version from 5/27/2021





## VAIA Two-hole bath mixer for free-standing assembly with hand shower set - Brushed Dark Platinum

25 943 819 Product version from 5/27/2021

### Spare parts list

| No. | Item Number        | Name  | Quantity used | Delivery time |
|-----|--------------------|---|---------------|---------------|
| 1   | 90 20 80 012 01-99 | handle ( cold )   | 1             | 20            |
| 2   | 90 90 03 130 00 90 | top   | 1             | 2             |
| 3   | 90 28 22 317 00-99 | spout   | 1             | 20            |
| 4   | 09 24 03 273-99    | nipple  | 1             | 20            |
| 5   | 90 14 10 032 00 90 | seal  | 1             | 2             |
| 6   | 90 21 10 011 00 90 | diverter  | 1             | 2             |
| 7   | 90 20 80 013 01-99 | handle ( hot )  | 1             | 20            |
| 8   | 90 90 03 131 00 90 | top   | 1             | 2             |
| 9   | 90 20 80 015 02-99 | handle  | 1             | 20            |
| 10  | 04 24 04 189 00-99 | nipple  | 1             | 20            |
| 11  | 90 14 20 002 00 90 | seal  | 1             | 2             |
| 12  | 90 12 11 140 41-99 | shower  | 1             | 20            |
| 13  | 90 30 02 072 00-99 | Metal shower hose 1/2" x 3/8" x 1250 mm - Brushed Dark Platinum | 1             | 20            |
| 14  | 90 18 40 035 00 90 | sleeve  | 1             | 2             |
| 15  | 04 28 10 029 01-99 | holder  | 1             | 20            |
| 16  | 09 29 05 021 20 90 | nipple  | 2             | 2             |
| 17  | 09 14 10 112 90    | seal  | 4             | 2             |
| 18  | 90 14 10 055 00 90 | seal  | 4             | 2             |
| 19  | 09 28 10 028-99    | sleeve  | 1             | 20            |
| 20  | 90 27 80 019 00-99 | rosette   | 2             | 20            |
| 21  | 09 23 30 040-07    | nut   | 2             | 30            |
| 22  | 09 24 03 121-99    | nipple  | 1             | 20            |
| 23  | 09 23 01 131 90    | back-flow preventer   | 1             | 2             |
| 24  | 09 21 02 143-99    | sleeve  | 1             | 20            |
| 25  | 90 14 20 026 00 90 | seal  | 1             | 2             |
| 26  | 04 28 22 009 20-99 | connection  | 2             | 20            |
| 27  | 09 14 10 081 90    | seal  | 2             | 2             |
| 28  | 09 24 03 094-07    | nipple  | 2             | 30            |
| 29  | 04 23 10 023 00 90 | fixing set  | 6             | 2             |
| 30  | 09 30 11 130-07    | connection  | 2             | 30            |
| 31  | 09 24 03 081 10 90 | extension   | 4             | 2             |
| 32  | 09 24 03 080 90    | extension   | 2             | 2             |