

# Shower system with single-lever shower mixer without hand shower - Brushed Bronze SERIES SPECIFIC

26 024 661 Product version from 10/1/2023



- shower with fixed riser projection 450mm
- pivotable 180°
- overhead shower: rain flow
- rain shower Ø 300 mm
- rain shower with anti-scale system
- max. rainshower flow 14 l/min
- Function from: 10 l/min
- shower holder with rosette Ø 78mm
- slide-on rosettes Ø 55 mm
- 1500 mm metal shower hose
- height of fittings up to top edge of elbow 2280mm
- height of fittings up to rain shower (bottom edge) 1940mm
- automatic diverter for fixed-riser shower/hand shower
- Pipe diameter 20 mm
- quick clearing
- WRAS

**This article does not include a hand shower!**

**Water carrying concealed rough parts on lower wall fixing.**

**Recommended spacing from bottom edge of shower stem to floor 92 mm.**


**Intrinsic protection against back flow.**

This article does not include a hand shower!

Water carrying concealed rough parts on lower wall fixing.

Recommended spacing from bottom edge of shower stem to floor 92 mm.


Intrinsic protection against back flow.

	Brushed Bronze	26 024 661-42
	Chrome	26 024 661-00
	Brushed Platinum	26 024 661-06
	Platinum	26 024 661-08
	Dark Chrome	26 024 661-19
	Dark Chrome	26 024 661-19 0010
	Light Gold	26 024 661-26
	Brushed Light Gold	26 024 661-27
	Brushed Durabronze (23kt Gold)	26 024 661-28
	Matte Black	26 024 661-33
	Brushed Dark Brass	26 024 661-39
	Brushed Champagne (22kt Gold)	26 024 661-46
	Champagne (22kt Gold)	26 024 661-47
	Brushed Chrome	26 024 661-93
	Brushed Dark Platinum	26 024 661-99

# Shower system with single-lever shower mixer without hand shower - Brushed Bronze SERIES SPECIFIC

26 024 661 Product version from 10/1/2023


## Required miscellaneous

	<b>Concealed wall mounting -</b> •min. recess depth 78 mm •max. recess depth 103 mm	35 003 970 90
---	---	---------------


## Required miscellaneous

	<b>Hand shower - Brushed Bronze</b> •Four settings: COMPACT RAIN, COMPACT SOFT FLOW, COMPACT AQUAPRESSURE FLOW, COMPACT CASCADE, max. flow rate l/min (at 3 bar) •spray head Ø 120mm •Hand shower see page {PAGE}	28 012 979-42
---	--	---------------


## Required miscellaneous

	<b>Hand shower FlowReduce - Brushed Bronze</b>	28 012 979-42 0010
---	--	--------------------

## Required miscellaneous

	<b>Hand shower FlowReduce - Brushed Bronze</b>	28 018 979-42 0010
---	--	--------------------


## Required miscellaneous

	<b>Hand shower FlowReduce - Brushed Bronze</b>	28 016 979-42 0010
---	--	--------------------

## Required miscellaneous

	<b>Hand shower - Brushed Bronze</b>	28 015 979-42
---	-------------------------------------	---------------

## Required miscellaneous

	<b>Hand shower - Brushed Bronze</b>	28 017 979-42
---	-------------------------------------	---------------

## Required miscellaneous

	<b>Hand shower - Brushed Bronze</b>	28 018 979-42
---	-------------------------------------	---------------

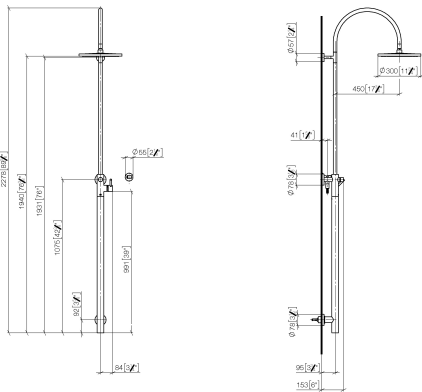
## Required miscellaneous

	<b>Hand shower - Brushed Bronze</b>	28 016 979-42
---	-------------------------------------	---------------

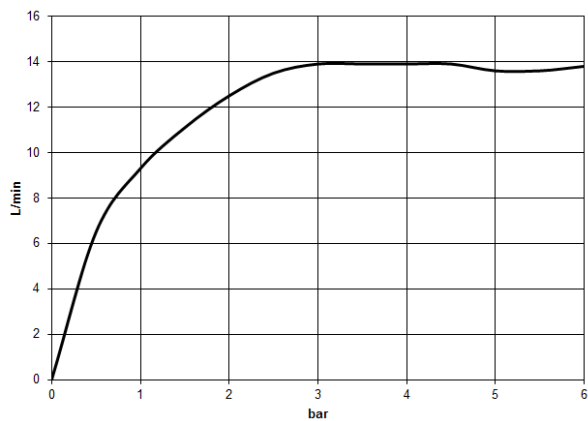
## Shower system with single-lever shower mixer without hand shower - Brushed Bronze SERIES SPECIFIC

26 024 661 Product version from 10/1/2023

mm [inches]



### Flow rate chart



### Codes & Standards

DIN 4109

ISO 3822

Scottish Water  
Byelaws

UK Water Supply  
Regulations

Ü-Zeichen



## Shower system with single-lever shower mixer without hand shower - Brushed Bronze SERIES SPECIFIC

---

26 024 661 Product version from 10/1/2023

Certificates and sustainability

---

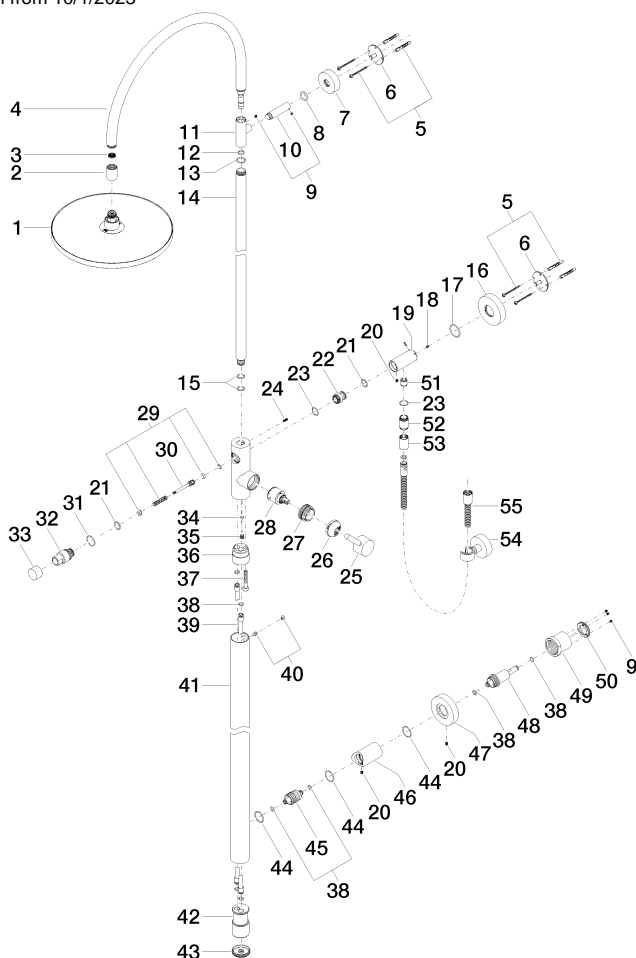
WRAS\_2212

LGA\_29

# Shower system with single-lever shower mixer without hand shower - Brushed Bronze

SERIES SPECIFIC

26 024 661 Product version from 10/1/2023



## Spare parts list

No.	Item Number	Name	Quantity used	Delivery time
49	09 24 77 002 90	nut	1.00	2
54	90 30 02 072 00-42	hose	1.00	30
26	09 24 04 341 90	nut	1.00	60
28	90 16 02 023 00 90	spring	1.00	2
25	90 20 66 017 00-42	handle	1.00	30
34	09 31 20 027 10-00	plug	1.00	10
19	09 11 10 081 20-42	connection	1.00	60
48	09 21 02 128 90	sleeve	1.00	2
15	90 14 10 055 00 90	seal	2.00	2
47	09 24 04 210 10 90	nipple	1.00	2
9	90 31 11 030 00 90	pin	1.00	2
16	09 27 88 010-42	rosette	1.00	60
6	09 30 11 103 90	holder	2.00	2
41	09 17 11 024 20 90	distributor	1.00	60
53	28 050 920-42	holder	1.00	-
Spare part can no longer be ordered, please order the replacement item				
45	09 11 10 080 20-42	connection	1.00	60
44	09 24 04 215 20 90	nipple	1.00	2
40	04 28 22 034 00-42	pipe	1.00	60
8	09 14 10 006 90	seal	1.00	2

# Shower system with single-lever shower mixer without hand shower - Brushed Bronze

SERIES SPECIFIC

26 024 661	Product version from 10/1/2023			
11	09 17 11 049-42	holder	1.00	60
52	90 21 02 069 00-42	cover	1.00	30
51	09 24 03 115 20-42	nipple	1.00	60
13	09 14 10 122 90	seal	1.00	2
30	09 14 10 112 90	seal	1.00	2
36	09 30 30 111 90	screw	1.00	2
50	90 23 01 141 00 90	back-flow preventer	1.00	2
35	09 24 03 149 10-42	adaptor	1.00	-
Spare part can no longer be ordered, please order the replacement item				
3	09 23 01 039 90	sieve	1.00	2
22	09 24 03 162 20 90	nipple	1.00	2
5	05 30 31 025 00 90	fixing set	2.00	2
20	09 31 11 049 90	pin	3.00	2
43	90 14 10 063 00 90	seal	3.00	2
21	90 14 10 010 00 90	seal	2.00	2
33	09 14 10 132 90	seal	1.00	2
42	09 21 02 132-42	lid	1.00	60
4	90 28 22 082 00-42	spout	1.00	30
1	04 12 05 091 00-42	shower	1.00	60
32	09 20 88 002-42	handle	1.00	60
39	04 31 20 034 00 90	plug	1.00	2
29	09 31 09 102 20-42	pull-rod	1.00	-
Spare part can no longer be ordered, please order the replacement item				
24	09 31 11 024 90	pin	1.00	2
14	04 28 22 134 20-42	pipe	1.00	60
27	90 15 05 064 00 90	cartridge	1.00	2
23	90 14 10 032 00 90	seal	2.00	2
12	90 14 10 077 00 90	seal	1.00	2
46	09 27 88 008-42	rosette	1.00	60
7	09 27 89 000-42	rosette	1.00	60
10	09 11 10 083-42	connection	1.00	60
2	09 24 03 163 20-42	adaptor	1.00	60
38	04 28 22 038 00 90	connection	2.00	2
18	09 31 11 061 90	pin	2.00	2
17	09 14 10 101 90	seal	1.00	2
31	09 21 34 081 20-42	nipple	1.00	60
37	09 14 10 139 90	seal	6.00	2