

Shower system with single-lever shower mixer without hand shower - Brushed Chrome SERIES SPECIFIC

26 024 661 Product version from 10/1/2023



- shower with fixed riser projection 450mm
- pivotable 180°
- overhead shower: rain flow
- rain shower Ø 300 mm
- rain shower with anti-scale system
- max. rainshower flow 14 l/min
- Function from: 10 l/min
- shower holder with rosette Ø 78mm
- slide-on rosettes Ø 55 mm
- 1500 mm metal shower hose
- height of fittings up to top edge of elbow 2280mm
- height of fittings up to rain shower (bottom edge) 1940mm
- automatic diverter for fixed-riser shower/hand shower
- Pipe diameter 20 mm
- quick clearing
- WRAS

This article does not include a hand shower!

Water carrying concealed rough parts on lower wall fixing.

Recommended spacing from bottom edge of shower stem to floor 92 mm.

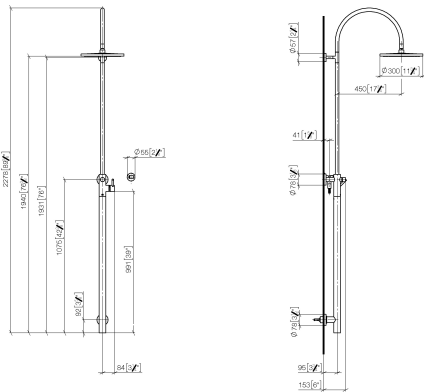
Intrinsic protection against back flow.

| | | |
|---|--------------------------------|--------------------|
|  | Brushed Chrome | 26 024 661-93 |
|  | Chrome | 26 024 661-00 |
|  | Brushed Platinum | 26 024 661-06 |
|  | Platinum | 26 024 661-08 |
|  | Dark Chrome | 26 024 661-19 |
|  | Dark Chrome | 26 024 661-19 0010 |
|  | Light Gold | 26 024 661-26 |
|  | Brushed Light Gold | 26 024 661-27 |
|  | Brushed Durabronze (23kt Gold) | 26 024 661-28 |
|  | Matte Black | 26 024 661-33 |
|  | Brushed Dark Brass | 26 024 661-39 |
|  | Brushed Bronze | 26 024 661-42 |
|  | Brushed Champagne (22kt Gold) | 26 024 661-46 |
|  | Champagne (22kt Gold) | 26 024 661-47 |
|  | Brushed Dark Platinum | 26 024 661-99 |

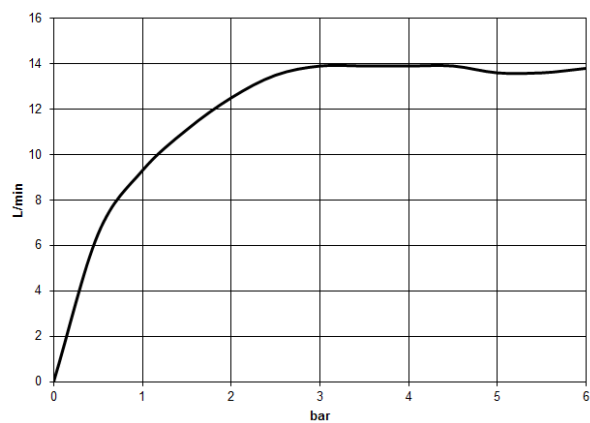
Shower system with single-lever shower mixer without hand shower - Brushed Chrome SERIES SPECIFIC

26 024 661 Product version from 10/1/2023

mm [inches]



Flow rate chart



Codes & Standards

DIN 4109

EN 1717

ISO 3822

Scottish Water
Byelaws

UK Water Supply
Regulations

Ü-Zeichen



Shower system with single-lever shower mixer without hand shower - Brushed Chrome SERIES SPECIFIC

26 024 661 Product version from 10/1/2023

Certificates and sustainability

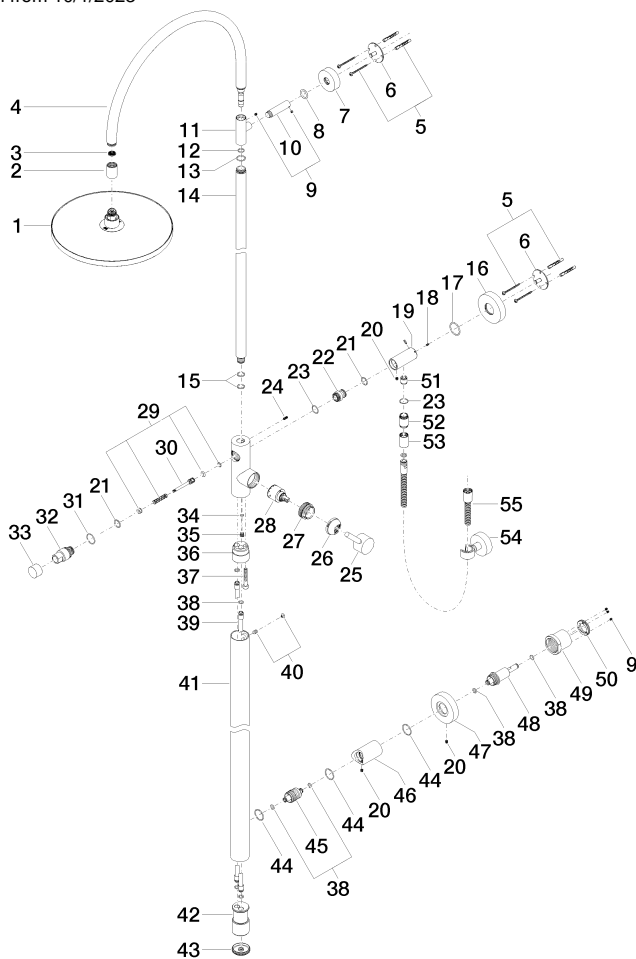
Belgaqua_21-023-2 WRAS_2212

LGA_29

Shower system with single-lever shower mixer without hand shower - Brushed Chrome SERIES SPECIFIC

26 024 661 Product version from 10/1/2023

Parts for other
finishes can be found
here: [Chrome](#)



Spare parts list

| No. | Item Number | Name | Quantity used | Delivery time |
|--|-----------------------|--|---------------|---------------|
| | 48 09 24 04 210 10 90 | nipple | 1.00 | 2 |
| | 46 09 11 10 080 20-93 | connection | 1.00 | 20 |
| | 55 90 30 02 072 00-93 | Metal shower hose 1/2" x 3/8" x 1250 mm - Brushed Chrome | 1.00 | 20 |
| | 3 09 23 01 039 90 | sieve | 1.00 | 2 |
| | 52 09 24 03 115 20-93 | nipple | 1.00 | 20 |
| | 45 09 24 04 215 20 90 | nipple | 1.00 | 2 |
| | 26 09 28 30 042-93 | cover | 1.00 | 20 |
| | 54 28 050 920-93 | holder | 1.00 | - |
| Spare part can no longer be ordered, please order the replacement item | | | | |
| | 36 09 24 03 149 10-93 | adaptor | 1.00 | 60 |
| | 4 90 28 22 082 00-93 | spout | 1.00 | 20 |
| | 6 09 30 11 103 90 | holder | 2.00 | 2 |
| | 8 09 14 10 006 90 | seal | 1.00 | 2 |
| | 28 90 15 05 064 00 90 | cartridge | 1.00 | 2 |
| | 27 09 24 04 341 90 | nut | 1.00 | 60 |
| | 1 04 12 05 091 00-93 | shower | 1.00 | 20 |
| | 14 04 28 22 134 20-93 | pipe | 1.00 | 20 |
| | 47 09 27 88 008-93 | rosette | 1.00 | 20 |
| | 30 09 31 09 102 20-93 | pull-rod | 1.00 | 60 |



Shower system with single-lever shower mixer without hand shower - Brushed Chrome SERIES SPECIFIC

| | | | | |
|------------|--------------------------------|---------------------|------|----|
| 26 024 661 | Product version from 10/1/2023 | | | |
| 5 | 05 30 31 025 00 90 | fixing set | 2.00 | 2 |
| 19 | 09 11 10 081 20-93 | connection | 1.00 | 20 |
| 18 | 09 31 11 061 90 | pin | 2.00 | 2 |
| 41 | 04 28 22 034 00-93 | pipe | 1.00 | 20 |
| 20 | 09 31 11 049 90 | pin | 3.00 | 2 |
| 2 | 09 24 03 163 20-93 | adaptor | 1.00 | 20 |
| 32 | 09 21 34 081 20-93 | nipple | 1.00 | 20 |
| 22 | 09 24 03 162 20 90 | nipple | 1.00 | 2 |
| 43 | 09 21 02 132-93 | lid | 1.00 | 20 |
| 11 | 09 17 11 049-93 | holder | 1.00 | 20 |
| 40 | 04 31 20 034 00 90 | plug | 1.00 | 2 |
| 42 | 09 17 11 024 20 90 | distributor | 1.00 | 60 |
| 31 | 09 14 10 112 90 | seal | 1.00 | 2 |
| 29 | 90 16 02 023 00 90 | spring | 1.00 | 2 |
| 17 | 09 14 10 101 90 | seal | 1.00 | 2 |
| 34 | 09 14 10 132 90 | seal | 1.00 | 2 |
| 7 | 09 27 89 000-93 | rosette | 1.00 | 20 |
| 38 | 09 14 10 139 90 | seal | 6.00 | 2 |
| 13 | 09 14 10 122 90 | seal | 1.00 | 2 |
| 49 | 09 21 02 128 90 | sleeve | 1.00 | 2 |
| 37 | 09 30 30 111 90 | screw | 1.00 | 2 |
| 39 | 04 28 22 038 00 90 | connection | 2.00 | 2 |
| 25 | 90 20 66 017 00-93 | handle | 1.00 | 20 |
| 16 | 09 27 88 010-93 | rosette | 1.00 | 20 |
| 35 | 09 31 20 027 10-00 | plug | 1.00 | 10 |
| 33 | 09 20 88 002-93 | handle | 1.00 | 20 |
| 24 | 09 31 11 024 90 | pin | 1.00 | 2 |
| 10 | 09 11 10 083-93 | connection | 1.00 | 20 |
| 50 | 09 24 77 002 90 | nut | 1.00 | 2 |
| 53 | 90 21 02 069 00-93 | cover | 1.00 | 20 |
| 15 | 90 14 10 055 00 90 | seal | 2.00 | 2 |
| 21 | 90 14 10 010 00 90 | seal | 2.00 | 2 |
| 12 | 90 14 10 077 00 90 | seal | 1.00 | 2 |
| 51 | 90 23 01 141 00 90 | back-flow preventer | 1.00 | 2 |
| 9 | 90 31 11 030 00 90 | pin | 1.00 | 2 |
| 23 | 90 14 10 032 00 90 | seal | 2.00 | 2 |
| 44 | 90 14 10 063 00 90 | seal | 3.00 | 2 |