







MADISON Shower set without hand shower - Brushed Platinum

26 413 370




- slide bar
- Pipe diameter 18 mm
- rosettes Ø 60 mm
- gauge 850 mm
- metal shower hose 1750mm with integrated anti-twist protection
- shower hose connector 1/2"
- WRAS


This article does not include a hand shower!

	Brushed Platinum	26 413 370-06
	Chrome	26 413 370-00
	Platinum	26 413 370-08
	Durabrass (23kt Gold)	26 413 370-09
	Brushed Durabrass (23kt Gold)	26 413 370-28
	Brushed Dark Platinum	26 413 370-99

Recommended miscellaneous

	Concealed wall elbow -	35 085 970 90
	•max. recess depth mm	
	•min. recess depth mm	


Recommended miscellaneous

	MADISON Wall elbow - Brushed Platinum	28 450 370-06
---	--	---------------

Required miscellaneous

	MADISON Hand shower FlowReduce - Brushed Platinum	28 002 978-06 0010
	•spray head Ø 95mm	
	•Hand shower see page {PAGE}	
	•Three settings: COMPACT RAIN, COMPACT SOFT FLOW, COMPACT AQUAPRESSURE FLOW, max. flow rate l/min (at 3 bar)	

Required miscellaneous

	MADISON Hand shower - Brushed Platinum	28 002 978-06
	•spray head Ø 95mm	
	•Hand shower see page {PAGE}	
	•Three settings: COMPACT RAIN, COMPACT SOFT FLOW, COMPACT AQUAPRESSURE FLOW, max. flow rate l/min (at 3 bar)	

Required miscellaneous

	MADISON Metal hand shower with porcelain insert (white) FlowReduce - Brushed Platinum	28 002 970-06 0010
---	--	--------------------

MADISON Shower set without hand shower - Brushed Platinum

26 413 370

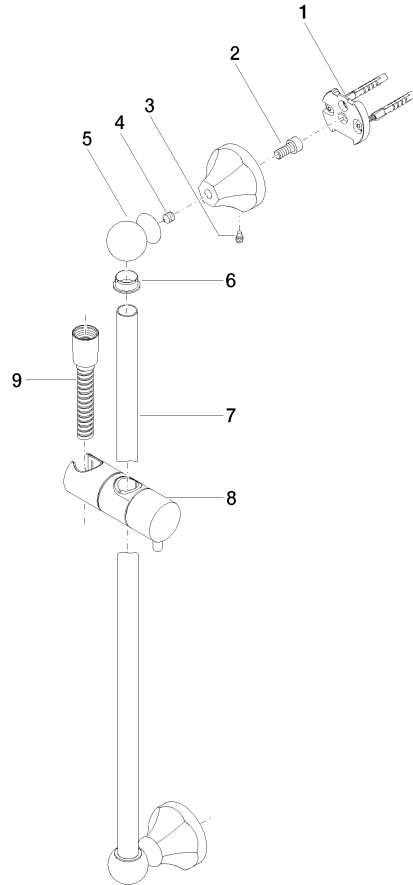


Codes & Standards			
ASME A112.18.1	cUPC	Scottish Water Byelaws	UK Water Supply Regulations

Certificates	
WRAS_2009	IAPMO_4976

MADISON Shower set without hand shower - Brushed Platinum

26 413 370



Spare parts list

No.	Item Number	Name	Quantity used	Delivery time
1	05 17 97 507 00 90	fixing set	2	2
2	09 30 30 048 90	screw	2	2
3	09 31 11 140 90	pin	2	60
4	09 31 11 002 90	pin	2	2
5	09 21 40 020-06	connection	2	60
6	09 18 40 009 90	sleeve	2	2
7	08 28 22 596-06	pipe	1	60
8	12 580 970-06	Slide unit - Brushed Platinum	1	10
9	28 204 970-06	Metal shower hose 1/2" x 1/2" x 1750 mm - Brushed Platinum	1	2