

META Hand shower set for bath rim or tile edge installation - Light Gold

META

27 702 660

Product version from 7/1/2023



- COMPACT RAIN, max. flow rate 6.8 l/min (at 3 bar)
- with anti-scale system
- rosette Ø 60 mm
- hole diameter 32 mm
- metal shower hose 1750mm with integrated anti-twist protection
- WRAS

Two-piece design allows hose to later be changed without dismantling the fitting.

Intrinsic protection against back flow.

| | | |
|---|-------------------------------|---------------|
|  | Light Gold | 27 702 660-26 |
|  | Chrome | 27 702 660-00 |
|  | Brushed Platinum | 27 702 660-06 |
|  | Dark Chrome | 27 702 660-19 |
|  | Brushed Light Gold | 27 702 660-27 |
|  | Matte Black | 27 702 660-33 |
|  | Brushed Dark Brass | 27 702 660-39 |
|  | Brushed Bronze | 27 702 660-42 |
|  | Brushed Champagne (22kt Gold) | 27 702 660-46 |
|  | Champagne (22kt Gold) | 27 702 660-47 |
|  | Brushed Chrome | 27 702 660-93 |
|  | Brushed Dark Platinum | 27 702 660-99 |



META Hand shower set for bath rim or tile edge installation - Light Gold

META

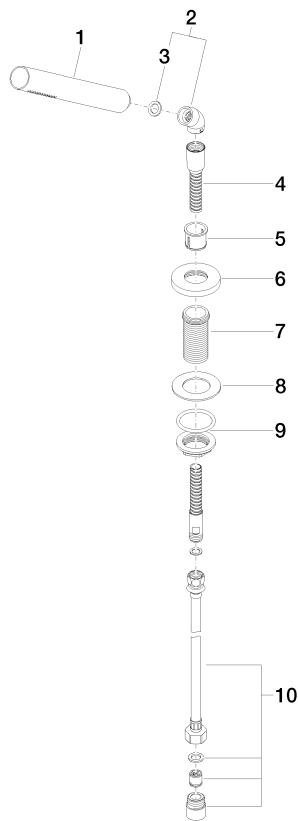
27 702 660 Product version from 7/1/2023

Certificates and sustainability

LGA_29

WRAS_2209

Parts for other
finishes can be found
here: [Chrome](#)



Spare parts list

| No. | Item Number | Name | Quantity used | Delivery time |
|-----|--------------------|--|---------------|---------------|
| 8 | 09 30 11 060 90 | disc | 1.00 | 2 |
| 4 | 28 322 970-26 | Metal shower hose 1/2" x 3/8" x 1750 mm - Light Gold | 1.00 | 20 |
| 10 | 12 505 970 90 | High pressure hose 1/2" x 3/8" x 500 mm - | 1.00 | 2 |
| 9 | 04 23 10 032 46 90 | fixing set | 1.00 | 2 |
| 6 | 09 27 66 003-26 | rosette | 1.00 | 60 |
| 5 | 90 18 40 085 00 90 | sleeve | 1.00 | 2 |
| 3 | 90 14 20 002 00 90 | seal | 1.00 | 2 |
| 7 | 09 30 01 090-07 | sleeve | 1.00 | 30 |
| 2 | 90 24 04 019 00-26 | angle | 1.00 | 20 |
| 1 | 90 12 11 140 41-26 | shower | 1.00 | 20 |