

META Hand shower set for bath rim or tile edge installation - Brushed Bronze

META

27 702 660 Product version from 7/1/2023



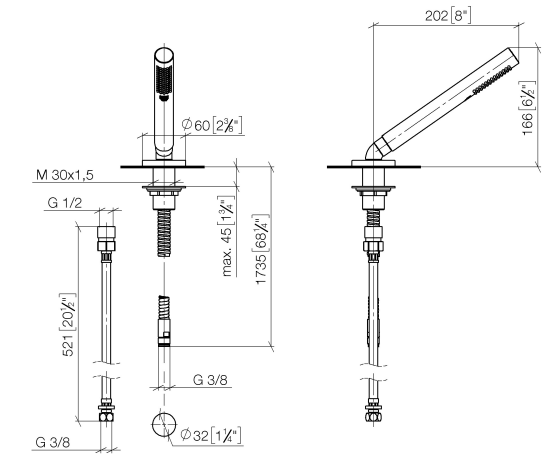
- COMPACT RAIN, max. flow rate 6.8 l/min (at 3 bar)
- with anti-scale system
- rosette Ø 60 mm
- hole diameter 32 mm
- metal shower hose 1750mm with integrated anti-twist protection
- WRAS

Two-piece design allows hose to later be changed without dismantling the fitting.

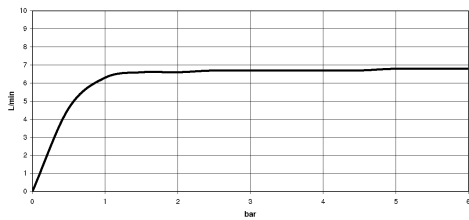
Intrinsic protection against back flow.

	Brushed Bronze	27 702 660-42
	Chrome	27 702 660-00
	Brushed Platinum	27 702 660-06
	Dark Chrome	27 702 660-19
	Light Gold	27 702 660-26
	Brushed Light Gold	27 702 660-27
	Matte Black	27 702 660-33
	Brushed Dark Brass	27 702 660-39
	Brushed Champagne (22kt Gold)	27 702 660-46
	Champagne (22kt Gold)	27 702 660-47
	Brushed Chrome	27 702 660-93
	Brushed Dark Platinum	27 702 660-99

mm [inches]



Flow rate chart



Codes & Standards

ASME A112.18.1	cUPC	DIN 4109	ISO 3822
Scottish Water Byelaws	UK Water Supply Regulations	Ü-Zeichen	



META Hand shower set for bath rim or tile edge installation - Brushed Bronze

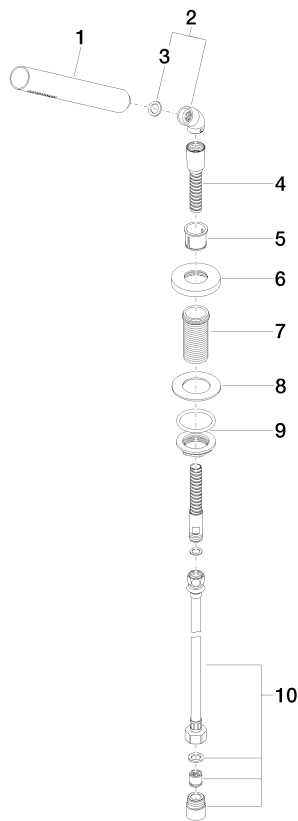
META

27 702 660 Product version from 7/1/2023

Certificates and sustainability

LGA_29 IAPMO_4976 WRAS_2209

Parts for other
finishes can be found
here: [Chrome](#)



Spare parts list

No.	Item Number	Name	Quantity used	Delivery time
4	28 322 970-42	Metal shower hose 1/2" x 3/8" x 1750 mm - Brushed Bronze	1.00	20
8	09 30 11 060 90	disc	1.00	2
7	09 30 01 090-07	sleeve	1.00	30
10	12 505 970 90	High pressure hose 1/2" x 3/8" x 500 mm -	1.00	2
3	90 14 20 002 00 90	seal	1.00	2
6	09 27 66 003-42	rosette	1.00	60
5	90 18 40 085 00 90	sleeve	1.00	2
9	04 23 10 032 46 90	fixing set	1.00	2
1	90 12 11 140 41-42	shower	1.00	20
2	90 24 04 019 00-42	angle	1.00	20