

VAIA Hand shower set for bath rim or tile edge installation - Chrome

VAIA

27 702 809 Product version from 3/13/2017 to 5/15/2020



- COMPACT RAIN, max. flow rate 6.8 l/min (at 3 bar)
- with anti-scale system
- rosette Ø 60 mm
- hole diameter 32 mm
- metal shower hose 1750mm with integrated anti-twist protection
- WRAS

Intrinsic protection against back flow.

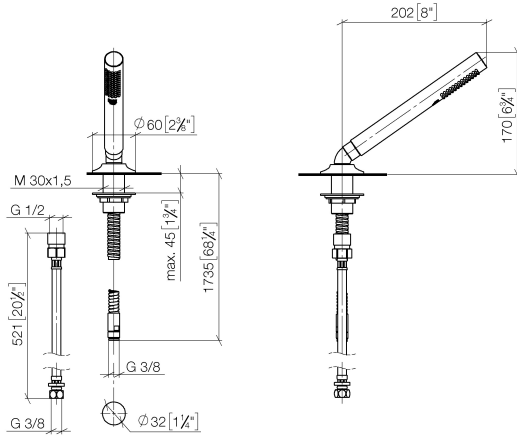
	Chrome	27 702 809-00
	Brushed Platinum	27 702 809-06
	Platinum	27 702 809-08
	Dark Chrome	27 702 809-19
	Brushed Durabronze (23kt Gold)	27 702 809-28
	Brushed Dark Brass	27 702 809-39
	Brushed Bronze	27 702 809-42
	Brushed Champagne (22kt Gold)	27 702 809-46
	Champagne (22kt Gold)	27 702 809-47
	Brushed Dark Platinum	27 702 809-99

VAIA Hand shower set for bath rim or tile edge installation - Chrome

VAIA

27 702 809 Product version from 3/13/2017 to 5/15/2020

mm [inches]



Flow rate chart



Codes & Standards

ASME A112.18.1	cUPC	DIN 4109	EN 1717
ISO 3822	Scottish Water Byelaws	UK Water Supply Regulations	Ü-Zeichen



VAIA Hand shower set for bath rim or tile edge installation - Chrome

VAIA

27 702 809 Product version from 3/13/2017 to 5/15/2020

Certificates and sustainability

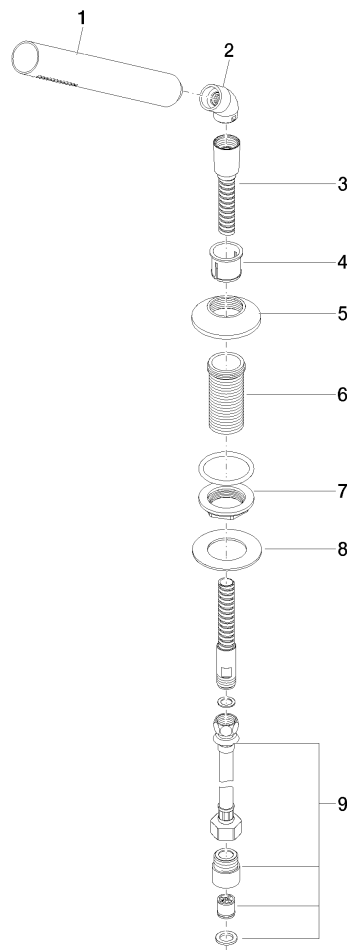
LGA_28 Belgaqua_22_282_2 IAPMO_4976 WRAS_2209

VAIA Hand shower set for bath rim or tile edge installation - Chrome

VAIA

27 702 809 Product version from 3/13/2017 to 5/15/2020

Parts for other
finishes can be found
here: Brushed
Platinum



Spare parts list

No.	Item Number	Name	Quantity used	Delivery time
8	09 30 11 060 90	disc	1.00	2
7	04 23 10 032 46 90	fixing set	1.00	2
9	12 505 970 90	High pressure hose 1/2" x 3/8" x 500 mm -	1.00	2
5	09 27 80 016-00	rosette	1.00	10
3	28 322 970-00	Metal shower hose 1/2" x 3/8" x 1750 mm - Chrome	1.00	2
6	09 30 01 090-07	sleeve	1.00	30
4	90 18 40 085 00 90	sleeve	1.00	2
2	90 24 04 019 00-00	angle	1.00	10
1	90 12 11 140 41-00	shower	1.00	10