

Hand shower set with individual rosettes with volume control - Brushed Dark Brass

SERIES SPECIFIC

27 809 985 Product version from 6/3/2020



- COMPACT RAIN, max. flow rate 15 l/min (at 3 bar)
- with volume control
- metal shower hose 1250mm with integrated anti-twist protection
- 3/8" shower outlet
- with anti-scale system

Technical data:

- rosette for wall elbow 60 x 60mm
- rosette for shower holder 60 x 60mm
- 1/2" wall elbow

Notes:

- WRAS

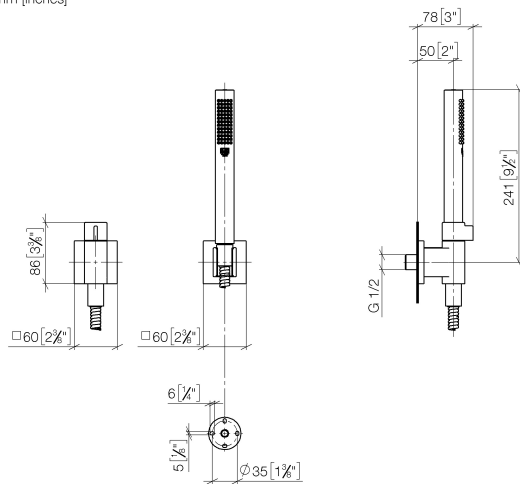
Intrinsic protection against back flow.

	Brushed Dark Brass	27 809 985-39
	Chrome	27 809 985-00
	Chrome	27 809 985-00 0010
	Brushed Platinum	27 809 985-06
	Brushed Platinum	27 809 985-06 0010
	Platinum	27 809 985-08 0010
	Platinum	27 809 985-08
	Dark Chrome	27 809 985-19 0010
	Brushed Durabronze (23kt Gold)	27 809 985-28
	Brushed Durabronze (23kt Gold)	27 809 985-28 0010
	Brushed Dark Brass	27 809 985-39 0010
	Brushed Bronze	27 809 985-42 0010
	Brushed Champagne (22kt Gold)	27 809 985-46
	Brushed Champagne (22kt Gold)	27 809 985-46 0010
	Champagne (22kt Gold)	27 809 985-47
	Champagne (22kt Gold)	27 809 985-47 0010
	Brushed Chrome	27 809 985-93 0010
	Brushed Chrome	27 809 985-93
	Brushed Dark Platinum	27 809 985-99
	Brushed Dark Platinum	27 809 985-99 0010

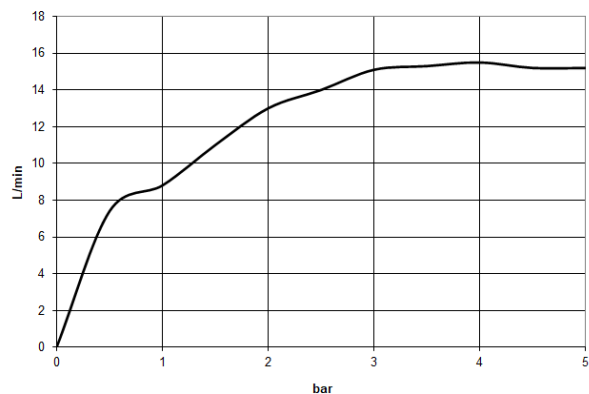
Hand shower set with individual rosettes with volume control - Brushed Dark Brass

SERIES SPECIFIC

27 809 985 Product version from 6/3/2020
mm [inches]



Flow rate chart



Codes & Standards

DIN 4109

EN 1717

ISO 3822

Ü-Zeichen



Hand shower set with individual rosettes with volume control - Brushed Dark Brass

SERIES SPECIFIC

27 809 985 Product version from 6/3/2020

Certificates and sustainability

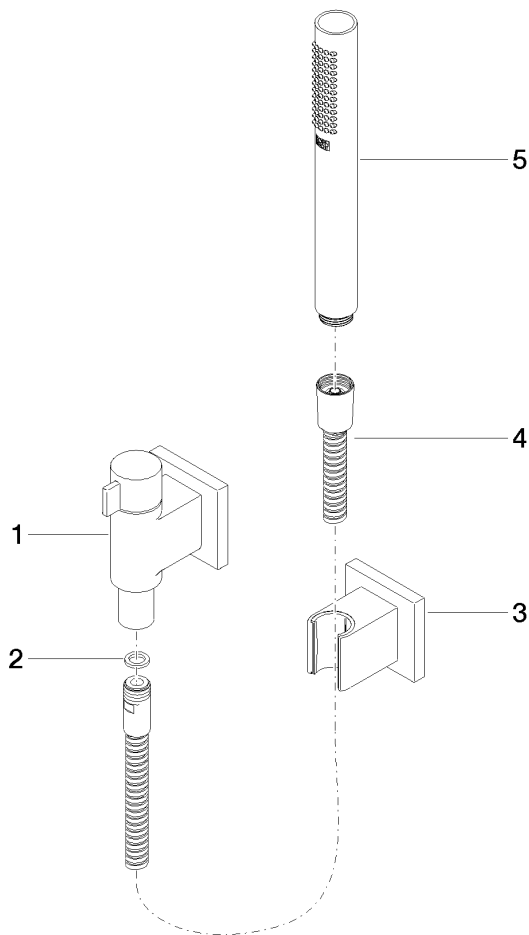
Belgaqua_21-024-2 LGA_29

Hand shower set with individual rosettes with volume control - Brushed Dark Brass

SERIES SPECIFIC

27 809 985 Product version from 6/3/2020

Parts for other
finishes can be found
here: [Chrome](#)



Spare parts list

No.	Item Number	Name	Quantity used	Delivery time
5	90 12 11 140 40-39	shower	1.00	30
2	90 14 20 026 00 90	seal	1.00	2
1	28 451 985-39	connection	1.00	-
Spare part can no longer be ordered, please order the replacement item				
3	28 050 980-39	Wall bracket - Brushed Dark Brass	1.00	30
4	90 30 02 072 00-39	hose	1.00	30