

Hand shower set with cover plate FlowReduce - Platinum

27 818 980 Product version from 3/2/2021



- COMPACT RAIN, max. flow rate 6.8 l/min (at 3 bar)
- with anti-scale system
- 3/8" shower outlet
- cover plate 240 x 60 mm
- metal shower hose 1250mm with integrated anti-twist protection
- 1/2" wall elbow
- This product can help a building meet the requirements of Green Building Rating Systems, e.g. LEED®, BREEAM®, DGNB

Intrinsic protection against back flow.

	Platinum	27 818 980-08 0010
	Chrome	27 818 980-00
	Chrome	27 818 980-00 0010
	Brushed Platinum	27 818 980-06
	Brushed Platinum	27 818 980-06 0010
	Platinum	27 818 980-08
	Dark Chrome	27 818 980-19
	Dark Chrome	27 818 980-19 0010
	Brushed Light Gold	27 818 980-27
	Brushed Durabronze (23kt Gold)	27 818 980-28 0010
	Brushed Durabronze (23kt Gold)	27 818 980-28
	Matte Black	27 818 980-33
	Matte Black	27 818 980-33 0010
	Brushed Champagne (22kt Gold)	27 818 980-46 0010
	Brushed Champagne (22kt Gold)	27 818 980-46
	Champagne (22kt Gold)	27 818 980-47 0010
	Champagne (22kt Gold)	27 818 980-47
	Brushed Chrome	27 818 980-93 0010
	Brushed Chrome	27 818 980-93
	Brushed Dark Platinum	27 818 980-99
	Brushed Dark Platinum	27 818 980-99 0010



Hand shower set with cover plate FlowReduce - Platinum

27 818 980 Product version from 3/2/2021

Recommended miscellaneous

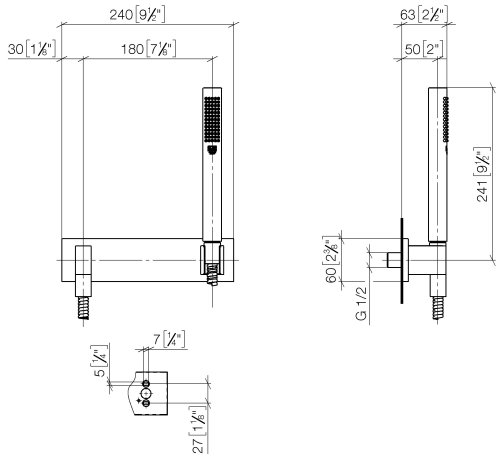


Concealed wall elbow -	35 085 970 90
•max. recess depth mm	
•min. recess depth mm	

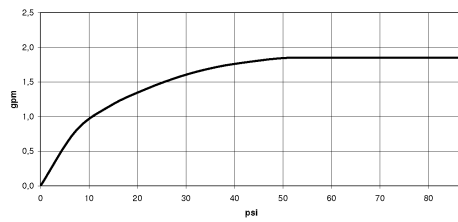
Hand shower set with cover plate FlowReduce - Platinum

27 818 980 Product version from 3/2/2021

mm [inches]



Flow rate chart



Codes & Standards

ASME A112.18.1 cUPC DIN 4109 ISO 3822

Ü-Zeichen



Hand shower set with cover plate FlowReduce - Platinum

27 818 980 Product version from 3/2/2021

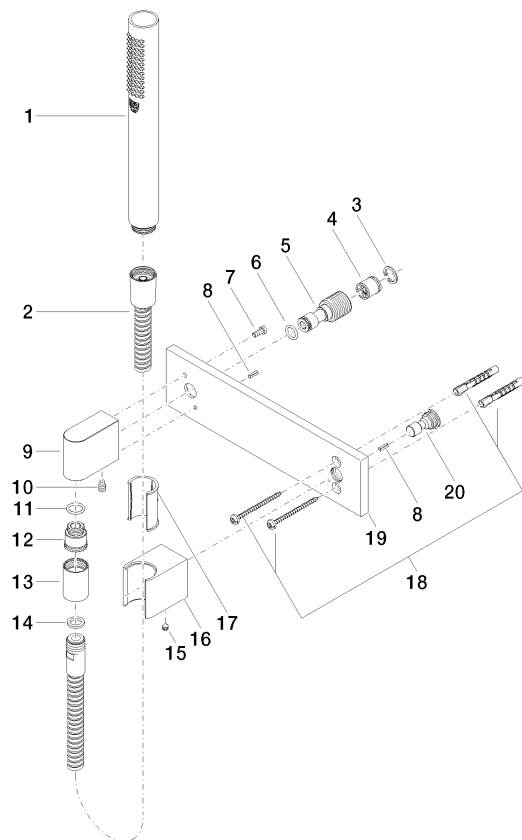
Certificates

LGA_29

IAPMO_4976

Hand shower set with cover plate FlowReduce - Platinum

27 818 980 Product version from 3/2/2021



Spare parts list

No.	Item Number	Name	Quantity used	Delivery time
1	90 12 11 140 41-08	shower	1	40
2	90 30 02 072 00-08	Metal shower hose 1/2" x 3/8" x 1250 mm - Platinum	1	40
3	09 16 01 014 90	ring	1	2
4	90 23 01 141 00 90	back-flow preventer	1	2
5	09 24 03 116 20 90	nipple	1	2
6	09 14 10 008 90	seal	1	2
7	09 30 30 054 90	screw	1	2
8	09 31 11 026 90	pin	2	2
9	09 11 03 046-08	connection	1	40
10	04 31 11 140 00 90	pin	1	2
11	90 14 10 077 00 90	seal	1	2
12	09 24 03 107 20 90	nipple	1	2
13	90 21 02 069 00-08	cover	1	40
14	90 14 20 026 00 90	seal	1	2
15	90 31 11 112 00 90	pin	1	2
16	09 17 20 044-08	holder	1	40
17	09 18 40 078 90	sleeve	1	2
18	05 30 31 025 00 90	fixing set	1	2
19	09 11 02 120-08	plate	1	40
20	09 24 03 073 90	nipple	1	2